

# 3 Bedroom Jouri Hills Townhouse - A

Ground Floor: 1,685 sq. ft.  
 First Floor: 1,475 sq. ft.  
**Total: 3,160 sq. ft.**



Ground floor



First floor





# 3 Bedroom Jouri Hills Townhouse – B

Ground Floor: 1,685 sq. ft.  
 First Floor: 1,475 sq. ft.  
**Total: 3,160 sq. ft.**



Ground floor



First floor





## Four Bedroom Jouri Hills Townhouse

Choose the ideal lifestyle for your growing family at the 4 Bedroom Jouri Hills Townhouse. Each beautifully designed home contains a range of smart features to make your life easier, more efficient and more environmentally friendly, while the nature-inspired architecture inspires growth and creativity.

This home contains three ensuite bedrooms on the first floor, with a further ensuite guest bedroom on the ground floor.



# 4 Bedroom Jouri Hills Townhouse - A

Ground Floor: 2,147 sq. ft.  
 First Floor: 1,850 sq. ft.  
**Total: 3,997 sq. ft.**



Ground floor



First floor





# 4 Bedroom Jouri Hills Townhouse - B

Ground Floor: 2,147 sq. ft.  
 First Floor: 1,850 sq. ft.  
**Total: 3,997 sq. ft.**



Ground floor



First floor







## Five Bedroom Jouri Hills Villa

Featuring superb contemporary design and an array of indoor and outdoor living and entertainment spaces, the Five Bedroom Jouri Hills Villa is a significant lifestyle statement in its own right. The use of smart technology and floor-to-ceiling windows help to deliver the feeling of a truly modern lifestyle.

This home features a master bedroom on the second floor with two terraces, as well as ensuite bathrooms for the four other bedrooms.



# 5 Bedroom Jouri Hills Villa A

Ground Floor: 2,309 sq. ft.  
 First Floor: 2,010 sq. ft.  
 Second Floor: 1,410 sq. ft.  
**Total: 5,729 sq. ft.**



Ground floor



First floor



Second floor





# 5 Bedroom Jouri Hills Villa B

Ground Floor: 2,309 sq. ft.  
 First Floor: 2,010 sq. ft.  
 Second Floor: 1,410 sq. ft.  
**Total: 5,729 sq. ft.**



Ground floor



First floor



Second floor



## Five Bedroom Jouri Hills Signature Villa 1

The beautifully appointed Five Bedroom Jouri Hills Townhouse makes the most of natural touches, with trees incorporated as part of the design and stunning use of natural light.

Smart home technology complements the fresh design of this home, creating a truly modern, comfortable and luxurious living experience.





# 5 Bedroom Jouri Hills Signature Villa - 1 A

Ground Floor: 2,786 sq. ft.  
 First Floor: 2,419 sq. ft.  
 Second Floor: 1,282 sq. ft.  
**Total: 6,487 sq. ft.**



Ground floor



First floor



Second floor







# 5 Bedroom Jouri Hills Signature Villa - 1 B

Ground Floor: 2,786 sq. ft.  
 First Floor: 2,419 sq. ft.  
 Second Floor: 1,282 sq. ft.  
**Total: 6,487 sq. ft.**



Ground floor



First floor



Second floor



## Five Bedroom Jouri Hills Signature Villa 2

Luxury touches and inspired architecture comes as standard at the Five Bedroom Jouri Hills Signature Villa. Spread over four floors, this distinctively designed home offers incredible architecture and beautiful vistas showcasing natural light right from the moment you open your door.

Contemporary features include a second-floor master bedroom and terrace featuring beautiful views of the community, a lift and a swimming pool as standard. The four other bedrooms are all ensuite, and all located on the second floor.





# 5 Bedroom Jouri Hills Signature Villa - 2 A

Basement :	1,587 sq. ft.
Ground floor:	2,785 sq. ft.
First floor:	2,419 sq. ft.
Second floor:	1,282 sq. ft.
<b>Total:</b>	<b>8,073 sq. ft.</b>



Basement

Ground floor

First floor

Second floor





# 5 Bedroom Jouri Hills Signature Villa - 2 B

Basement :	1,587 sq. ft.
Ground floor:	2,785 sq. ft.
First floor:	2,419 sq. ft.
Second floor:	1,282 sq. ft.
<b>Total:</b>	<b>8,073 sq. ft.</b>

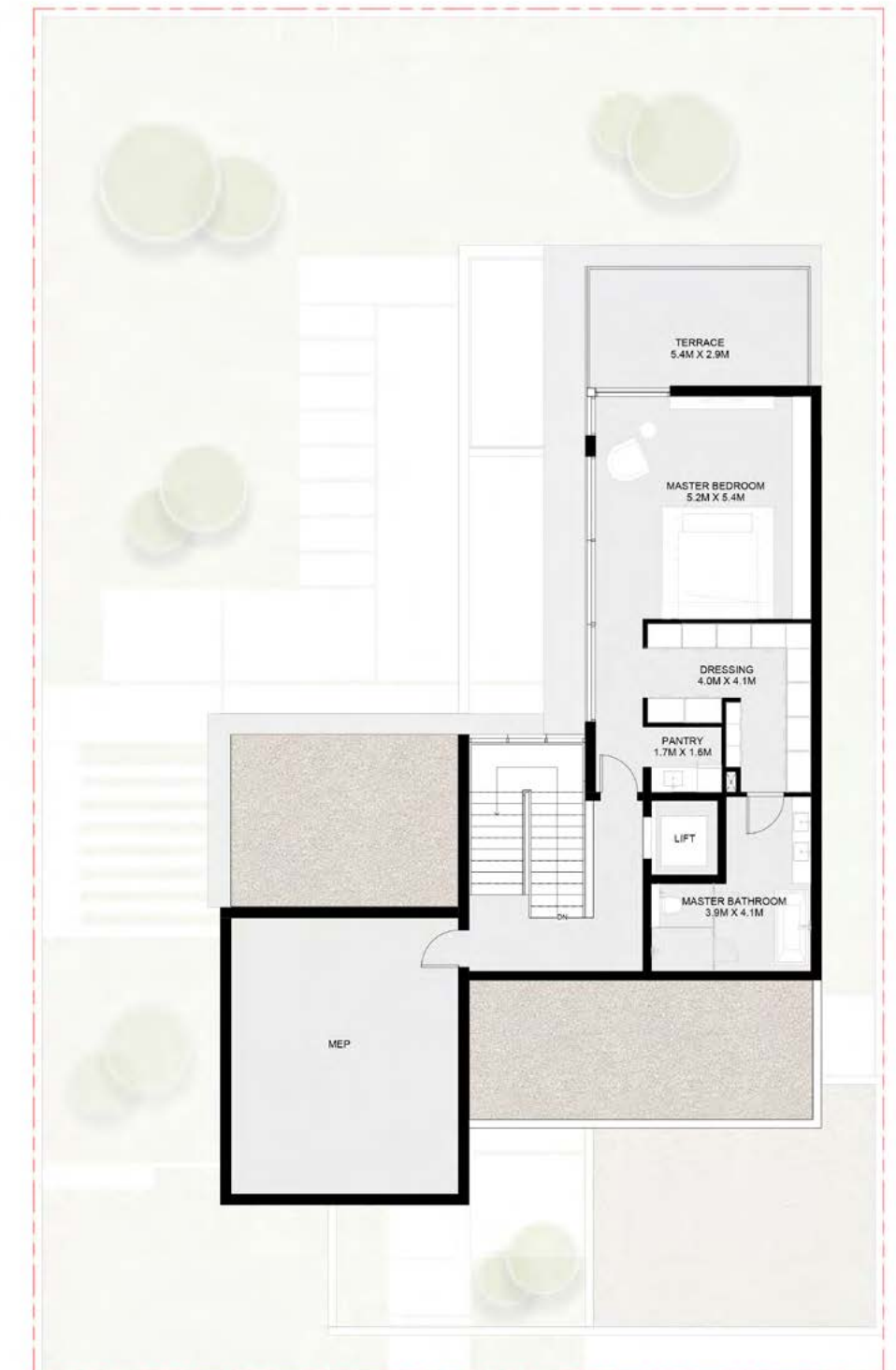


Basement

Ground floor

First floor

Second floor





## Six Bedroom Jouri Hills Mansion

Spread over four floors, the Six Bedroom Jouri Hills Mansion consists of a number of breathtaking living spaces, combining to create a home that has been designed with your comfort and wellbeing in mind.

From the master bedroom and terrace on the second floor, through to the vast basement with a flexible entertainment or fitness floor plan that can be designed in line with your needs, this home also includes a lift, underground parking for three cars and a swimming pool as standard. Signature features include a landscaped 'English courtyard' for outdoor entertainment.





# 6 Bedroom Jouri Hills Mansion - A

Basement :	4,788 sq. ft.
Ground floor:	4,202 sq. ft.
First floor:	3,557 sq. ft.
Second floor:	2,542 sq. ft.
<b>Total:</b>	<b>15,089 sq. ft.</b>

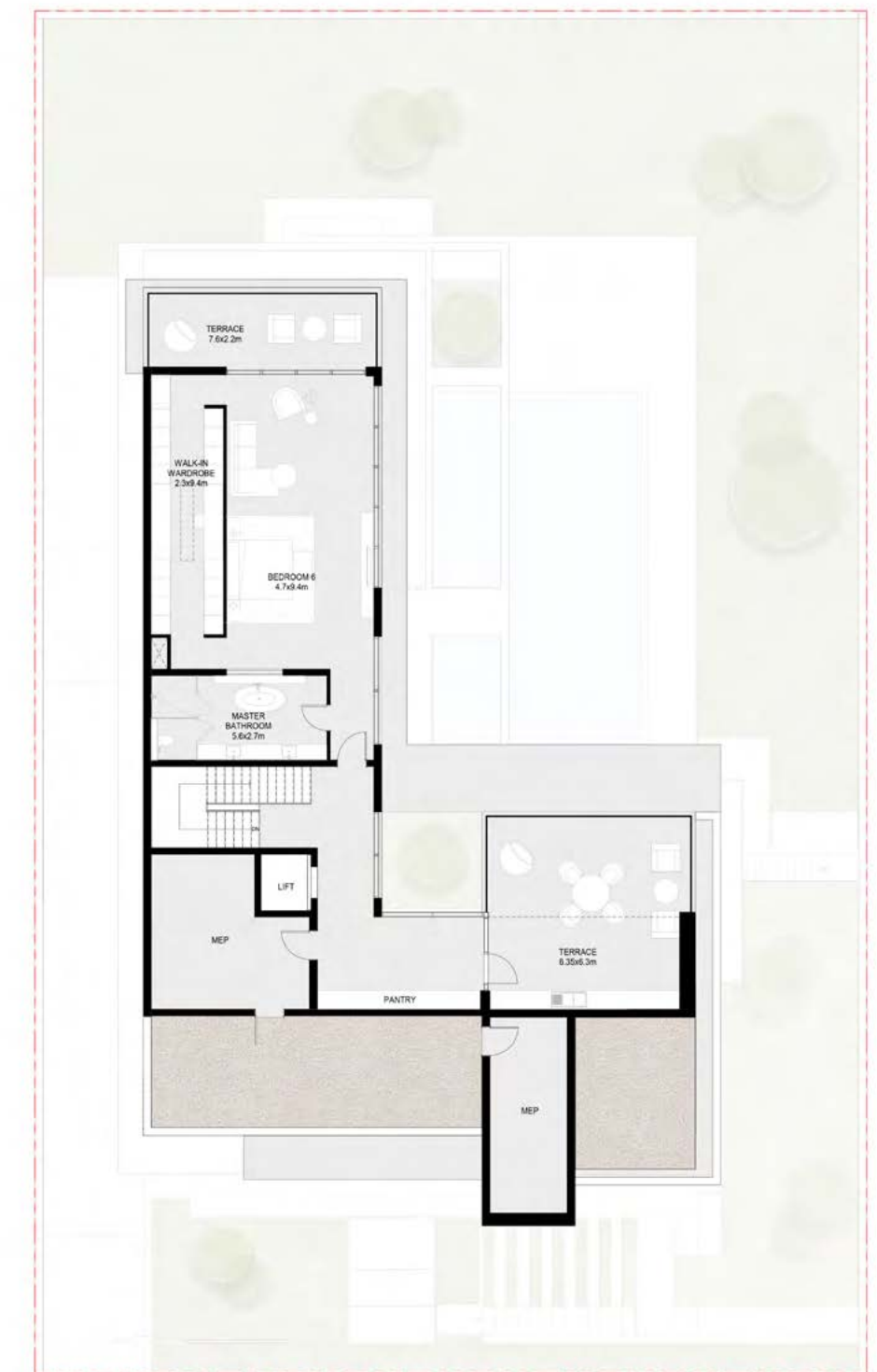


Basement

Ground floor

First floor

Second floor





# 6 Bedroom Jouri Hills Mansion - B

Basement :	4,788 sq. ft.
Ground floor:	4,202 sq. ft.
First floor:	3,557 sq. ft.
Second floor:	2,542 sq. ft.
<b>Total:</b>	<b>15,089 sq. ft.</b>



Basement

Ground floor

First floor

Second floor



Measurements are indicative 'finish to finish' in Metric & Imperial excluding construction tolerance | Plot/unit dimensions may vary from brochure, and unit types/plans may exist as mirrored versions | All images used are for illustrative purposes only | Unless stated otherwise, all fittings and interior decorative items shown are for illustrative purposes only | The developer reserves the right to make alterations, at its absolute discretion, without any liability whatsoever up to the final 'as built' status.

تشير الأرقام الواردة إلى القياسات النهائية من سطح الحائط المشط إلى سطح الحائط المشط المقابل له وبالوحدات المترية والإنجليزية باستثناء التفاوت المسموح به في الأعمال الإنشائية | قد تختلف أبعاد القطع/الوحدات عما هو موضح في البرشور، وقد يتم عرض أوصاف/مخططات الوحدات بنسخ معكوسة | جميع الصور الواردة هي لأغراض التوضيح فقط | جميع التجهيزات والديكورات الداخلية الواردة هي لأغراض التوضيح فقط، ما لم يرد خلاف ذلك صراحة | يحفظ المطور، وفقاً لتقديره المطلق، بحقه في إجراء التعديلات دون أي مسؤولية معتبرة على ذلك حتى إنجاز العمل بصورة نهائية.