



Kempinski Residences
The Creek

DUBAI

FLOOR PLANS TOWER 1

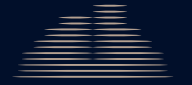
Kempinski

HOTELIERS SINCE 1897

LOFT TYPE A

Floor 1

Internal Area	59.10 sq m	636.15 sq ft
Balcony Area	17.80 sq m	191.60 sq ft
Total Area	76.90 sq m	827.75 sq ft



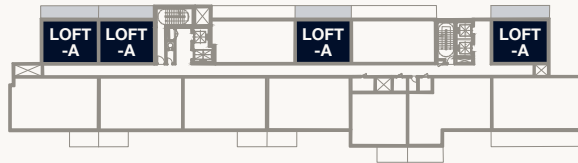
Kempinski Residences
The Creek

DUBAI

Tower 1



PARK
VIEW



BURJ KHALIFA
VIEW



WILDLIFE SANCTUARY
VIEW



CREEK HARBOUR
VIEW

NORTH

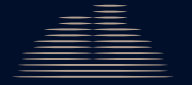


1. All dimensions are in imperial and metric, and measured to the structural elements and exclude wall finishes and construction tolerances. 2. All materials, dimensions, and drawings are approximate only. 3. Information is subject to change without notice, at developer's absolute discretion. 4. Actual area may vary from the stated area. 5. Balcony sizes may vary between units. 6. Drawings are not to scale. 7. All images used are for illustrative purposes only and do not represent the actual size, features, specifications, fittings, or furnishings. 8. The developer reserves the right to make revisions/alterations, at its absolute discretion, without any liability whatsoever.

LOFT TYPE A

Floor 2-5

Internal Area	59.10 sq m	636.15 sq ft
Balcony Area	17.80 sq m	191.60 sq ft
Total Area	76.90 sq m	827.75 sq ft



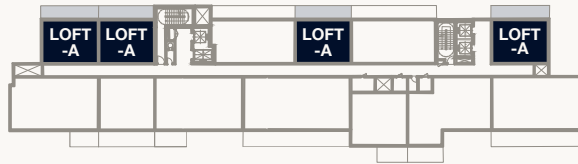
Kempinski Residences
The Creek

DUBAI

Tower 1



PARK
VIEW



BURJ KHALIFA
VIEW



WILDLIFE SANCTUARY
VIEW



CREEK HARBOUR
VIEW

NORTH



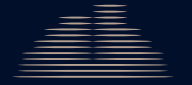
ENTRANCE

1. All dimensions are in imperial and metric, and measured to the structural elements and exclude wall finishes and construction tolerances. 2. All materials, dimensions, and drawings are approximate only. 3. Information is subject to change without notice, at developer's absolute discretion. 4. Actual area may vary from the stated area. 5. Balcony sizes may vary between units. 6. Drawings are not to scale. 7. All images used are for illustrative purposes only and do not represent the actual size, features, specifications, fittings, or furnishings. 8. The developer reserves the right to make revisions/alterations, at its absolute discretion, without any liability whatsoever.

LOFT TYPE A

Floor 6-7

Internal Area	59.10 sq m	636.15 sq ft
Balcony Area	17.80 sq m	191.60 sq ft
Total Area	76.90 sq m	827.75 sq ft



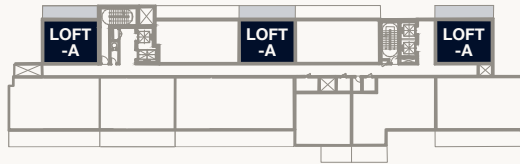
Kempinski Residences
The Creek

DUBAI

Tower 1



PARK
VIEW



BURJ KHALIFA
VIEW



WILDLIFE SANCTUARY
VIEW



CREEK HARBOUR
VIEW

NORTH



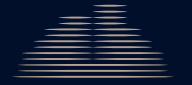
ENTRANCE

1. All dimensions are in imperial and metric, and measured to the structural elements and exclude wall finishes and construction tolerances. 2. All materials, dimensions, and drawings are approximate only. 3. Information is subject to change without notice, at developer's absolute discretion. 4. Actual area may vary from the stated area. 5. Balcony sizes may vary between units. 6. Drawings are not to scale. 7. All images used are for illustrative purposes only and do not represent the actual size, features, specifications, fittings, or furnishings. 8. The developer reserves the right to make revisions/alterations, at its absolute discretion, without any liability whatsoever.

LOFT TYPE A

Floor 8-9

Internal Area	59.10 sq m	636.15 sq ft
Balcony Area	17.80 sq m	191.60 sq ft
Total Area	76.90 sq m	827.75 sq ft



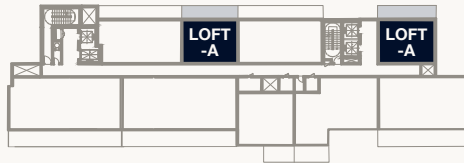
Kempinski Residences
The Creek

DUBAI

Tower 1



PARK
VIEW



WILDLIFE SANCTUARY
VIEW



CREEK HARBOUR
VIEW



BURJ KHALIFA
VIEW

NORTH



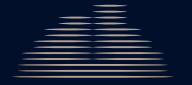
ENTRANCE

1. All dimensions are in imperial and metric, and measured to the structural elements and exclude wall finishes and construction tolerances. 2. All materials, dimensions, and drawings are approximate only. 3. Information is subject to change without notice, at developer's absolute discretion. 4. Actual area may vary from the stated area. 5. Balcony sizes may vary between units. 6. Drawings are not to scale. 7. All images used are for illustrative purposes only and do not represent the actual size, features, specifications, fittings, or furnishings. 8. The developer reserves the right to make revisions/alterations, at its absolute discretion, without any liability whatsoever.

LOFT TYPE A

Floor 10–12

Internal Area	59.10 sq m	636.15 sq ft
Balcony Area	17.80 sq m	191.60 sq ft
Total Area	76.90 sq m	827.75 sq ft



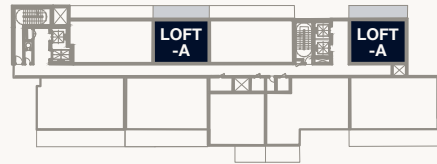
Kempinski Residences
The Creek

DUBAI

Tower 1



PARK
VIEW



WILDLIFE SANCTUARY
VIEW



CREEK HARBOUR
VIEW



BURJ KHALIFA
VIEW

NORTH

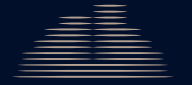


1. All dimensions are in imperial and metric, and measured to the structural elements and exclude wall finishes and construction tolerances. 2. All materials, dimensions, and drawings are approximate only. 3. Information is subject to change without notice, at developer's absolute discretion. 4. Actual area may vary from the stated area. 5. Balcony sizes may vary between units. 6. Drawings are not to scale. 7. All images used are for illustrative purposes only and do not represent the actual size, features, specifications, fittings, or furnishings. 8. The developer reserves the right to make revisions/alterations, at its absolute discretion, without any liability whatsoever.

1 BEDROOM – TYPE A

Floor 1–5

Internal Area	89.11 sq m	959.18 sq ft
Balcony Area	26.37 sq m	283.85 sq ft
Total Area	115.48 sq m	1,243.03 sq ft



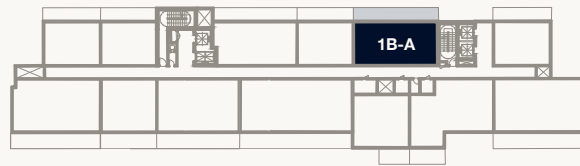
Kempinski Residences
The Creek

DUBAI

Tower 1



PARK
VIEW



WILDLIFE SANCTUARY
VIEW



CREEK HARBOUR
VIEW



BURJ KHALIFA
VIEW

NORTH



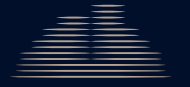
ENTRANCE

1. All dimensions are in imperial and metric, and measured to the structural elements and exclude wall finishes and construction tolerances. 2. All materials, dimensions, and drawings are approximate only. 3. Information is subject to change without notice, at developer's absolute discretion. 4. Actual area may vary from the stated area. 5. Balcony sizes may vary between units. 6. Drawings are not to scale. 7. All images used are for illustrative purposes only and do not represent the actual size, features, specifications, fittings, or furnishings. 8. The developer reserves the right to make revisions/alterations, at its absolute discretion, without any liability whatsoever.

1 BEDROOM – TYPE A

Floor 6–7

Internal Area	89.11 sq m	959.18 sq ft
Balcony Area	26.37 sq m	283.85 sq ft
Total Area	115.48 sq m	1,243.03 sq ft



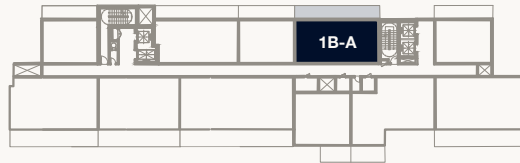
Kempinski Residences
The Creek

DUBAI

Tower 1



PARK
VIEW



BURJ KHALIFA
VIEW



WILDLIFE SANCTUARY
VIEW



CREEK HARBOUR
VIEW

NORTH



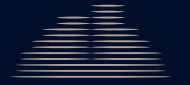
ENTRANCE

1. All dimensions are in imperial and metric, and measured to the structural elements and exclude wall finishes and construction tolerances. 2. All materials, dimensions, and drawings are approximate only. 3. Information is subject to change without notice, at developer's absolute discretion. 4. Actual area may vary from the stated area. 5. Balcony sizes may vary between units. 6. Drawings are not to scale. 7. All images used are for illustrative purposes only and do not represent the actual size, features, specifications, fittings, or furnishings. 8. The developer reserves the right to make revisions/alterations, at its absolute discretion, without any liability whatsoever.

1 BEDROOM – TYPE A

Floor 8–9

Internal Area	89.11 sq m	959.18 sq ft
Balcony Area	26.37 sq m	283.85 sq ft
Total Area	115.48 sq m	1,243.03 sq ft



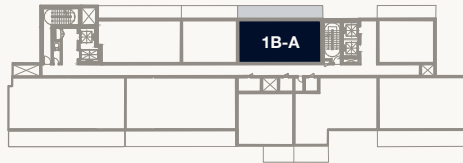
Kempinski Residences
The Creek

DUBAI

Tower 1



PARK
VIEW



BURJ KHALIFA
VIEW



WILDLIFE SANCTUARY
VIEW



CREEK HARBOUR
VIEW

NORTH



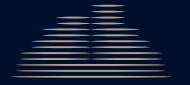
ENTRANCE

1. All dimensions are in imperial and metric, and measured to the structural elements and exclude wall finishes and construction tolerances. 2. All materials, dimensions, and drawings are approximate only. 3. Information is subject to change without notice, at developer's absolute discretion. 4. Actual area may vary from the stated area. 5. Balcony sizes may vary between units. 6. Drawings are not to scale. 7. All images used are for illustrative purposes only and do not represent the actual size, features, specifications, fittings, or furnishings. 8. The developer reserves the right to make revisions/alterations, at its absolute discretion, without any liability whatsoever.

1 BEDROOM – TYPE A

Floor 10–12

Internal Area	89.11 sq m	959.18 sq ft
Balcony Area	26.37 sq m	283.85 sq ft
Total Area	115.48 sq m	1,243.03 sq ft



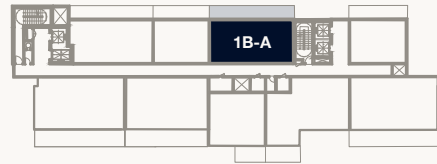
Kempinski Residences
The Creek

DUBAI

Tower 1



PARK
VIEW



BURJ KHALIFA
VIEW



WILDLIFE SANCTUARY
VIEW



CREEK HARBOUR
VIEW

NORTH

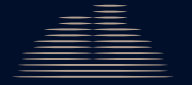


1. All dimensions are in imperial and metric, and measured to the structural elements and exclude wall finishes and construction tolerances. 2. All materials, dimensions, and drawings are approximate only. 3. Information is subject to change without notice, at developer's absolute discretion. 4. Actual area may vary from the stated area. 5. Balcony sizes may vary between units. 6. Drawings are not to scale. 7. All images used are for illustrative purposes only and do not represent the actual size, features, specifications, fittings, or furnishings. 8. The developer reserves the right to make revisions/alterations, at its absolute discretion, without any liability whatsoever.

1 BEDROOM – TYPE C

Floor 1–5

Internal Area	87.31 sq m	939.83 sq ft
Balcony Area	26.37 sq m	283.85 sq ft
Total Area	113.68 sq m	1,223.67 sq ft



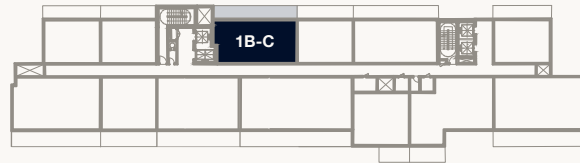
Kempinski Residences
The Creek

DUBAI

Tower 1



PARK
VIEW



WILDLIFE SANCTUARY
VIEW



BURJ KHALIFA
VIEW



CREEK HARBOUR
VIEW

NORTH



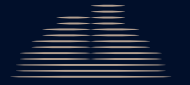
ENTRANCE

1. All dimensions are in imperial and metric, and measured to the structural elements and exclude wall finishes and construction tolerances. 2. All materials, dimensions, and drawings are approximate only. 3. Information is subject to change without notice, at developer's absolute discretion. 4. Actual area may vary from the stated area. 5. Balcony sizes may vary between units. 6. Drawings are not to scale. 7. All images used are for illustrative purposes only and do not represent the actual size, features, specifications, fittings, or furnishings. 8. The developer reserves the right to make revisions/alterations, at its absolute discretion, without any liability whatsoever.

1 BEDROOM – TYPE C

Floor 6–7

Internal Area	87.31 sq m	939.83 sq ft
Balcony Area	26.37 sq m	283.85 sq ft
Total Area	113.68 sq m	1,223.67 sq ft



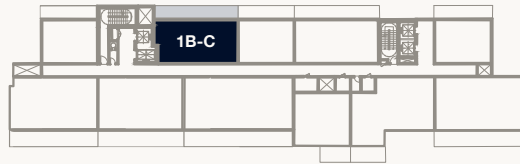
Kempinski Residences
The Creek

DUBAI

Tower 1



PARK
VIEW



BURJ KHALIFA
VIEW



WILDLIFE SANCTUARY
VIEW



CREEK HARBOUR
VIEW

NORTH



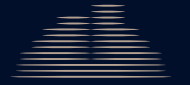
ENTRANCE

1. All dimensions are in imperial and metric, and measured to the structural elements and exclude wall finishes and construction tolerances. 2. All materials, dimensions, and drawings are approximate only. 3. Information is subject to change without notice, at developer's absolute discretion. 4. Actual area may vary from the stated area. 5. Balcony sizes may vary between units. 6. Drawings are not to scale. 7. All images used are for illustrative purposes only and do not represent the actual size, features, specifications, fittings, or furnishings. 8. The developer reserves the right to make revisions/alterations, at its absolute discretion, without any liability whatsoever.

1 BEDROOM – TYPE C

Floor 8–9

Internal Area	87.31 sq m	939.83 sq ft
Balcony Area	26.37 sq m	283.85 sq ft
Total Area	113.68 sq m	1,223.67 sq ft



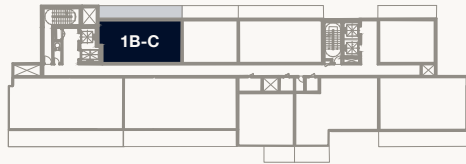
Kempinski Residences
The Creek

DUBAI

Tower 1



PARK
VIEW



WILDLIFE SANCTUARY
VIEW



BURJ KHALIFA
VIEW



CREEK HARBOUR
VIEW

NORTH



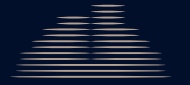
ENTRANCE

1. All dimensions are in imperial and metric, and measured to the structural elements and exclude wall finishes and construction tolerances. 2. All materials, dimensions, and drawings are approximate only. 3. Information is subject to change without notice, at developer's absolute discretion. 4. Actual area may vary from the stated area. 5. Balcony sizes may vary between units. 6. Drawings are not to scale. 7. All images used are for illustrative purposes only and do not represent the actual size, features, specifications, fittings, or furnishings. 8. The developer reserves the right to make revisions/alterations, at its absolute discretion, without any liability whatsoever.

1 BEDROOM – TYPE C

Floor 10–12

Internal Area	87.31 sq m	939.83 sq ft
Balcony Area	26.37 sq m	283.85 sq ft
Total Area	113.68 sq m	1,223.67 sq ft



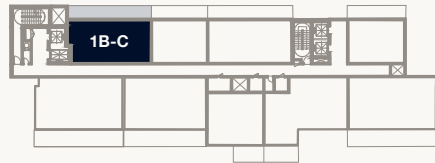
Kempinski Residences
The Creek

DUBAI

Tower 1



PARK
VIEW



WILDLIFE SANCTUARY
VIEW



BURJ KHALIFA
VIEW



CREEK HARBOUR
VIEW

NORTH



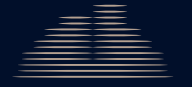
ENTRANCE

1. All dimensions are in imperial and metric, and measured to the structural elements and exclude wall finishes and construction tolerances. 2. All materials, dimensions, and drawings are approximate only. 3. Information is subject to change without notice, at developer's absolute discretion. 4. Actual area may vary from the stated area. 5. Balcony sizes may vary between units. 6. Drawings are not to scale. 7. All images used are for illustrative purposes only and do not represent the actual size, features, specifications, fittings, or furnishings. 8. The developer reserves the right to make revisions/alterations, at its absolute discretion, without any liability whatsoever.

1 BEDROOM – TYPE D

Floor 2–5

Internal Area	71.13 sq m	765.61 sq ft
Balcony Area	22.67 sq m	244.02 sq ft
Total Area	93.80 sq m	1,009.63 sq ft



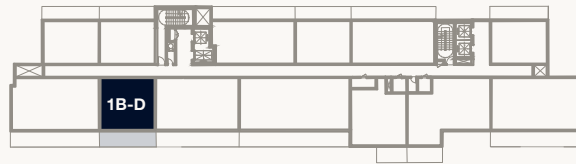
Kempinski Residences
The Creek

DUBAI

Tower 1



PARK
VIEW



BURJ KHALIFA
VIEW



WILDLIFE SANCTUARY
VIEW

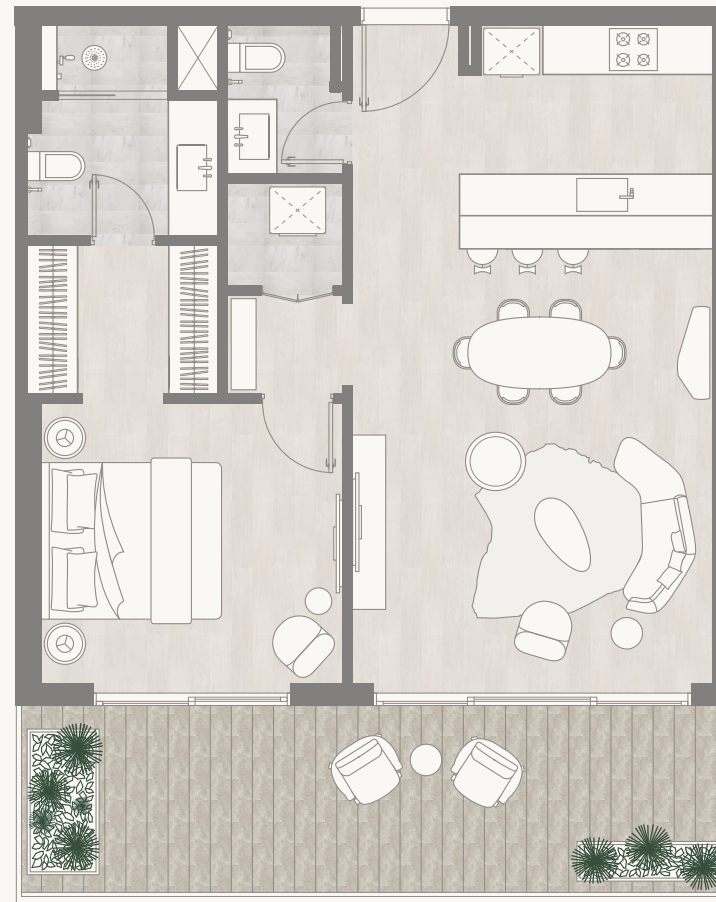


CREEK HARBOUR
VIEW

NORTH



ENTRANCE

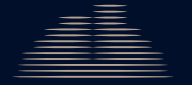


1. All dimensions are in imperial and metric, and measured to the structural elements and exclude wall finishes and construction tolerances. 2. All materials, dimensions, and drawings are approximate only. 3. Information is subject to change without notice, at developer's absolute discretion. 4. Actual area may vary from the stated area. 5. Balcony sizes may vary between units. 6. Drawings are not to scale. 7. All images used are for illustrative purposes only and do not represent the actual size, features, specifications, fittings, or furnishings. 8. The developer reserves the right to make revisions/alterations, at its absolute discretion, without any liability whatsoever.

1 BEDROOM – TYPE E

Floor 2–5

Internal Area	77.61 sq m	835.39 sq ft
Balcony Area	11.20 sq m	120.55 sq ft
Total Area	88.81 sq m	955.95 sq ft



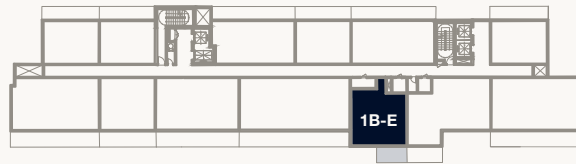
Kempinski Residences
The Creek

DUBAI

Tower 1



PARK
VIEW



1B-E



BURJ KHALIFA
VIEW

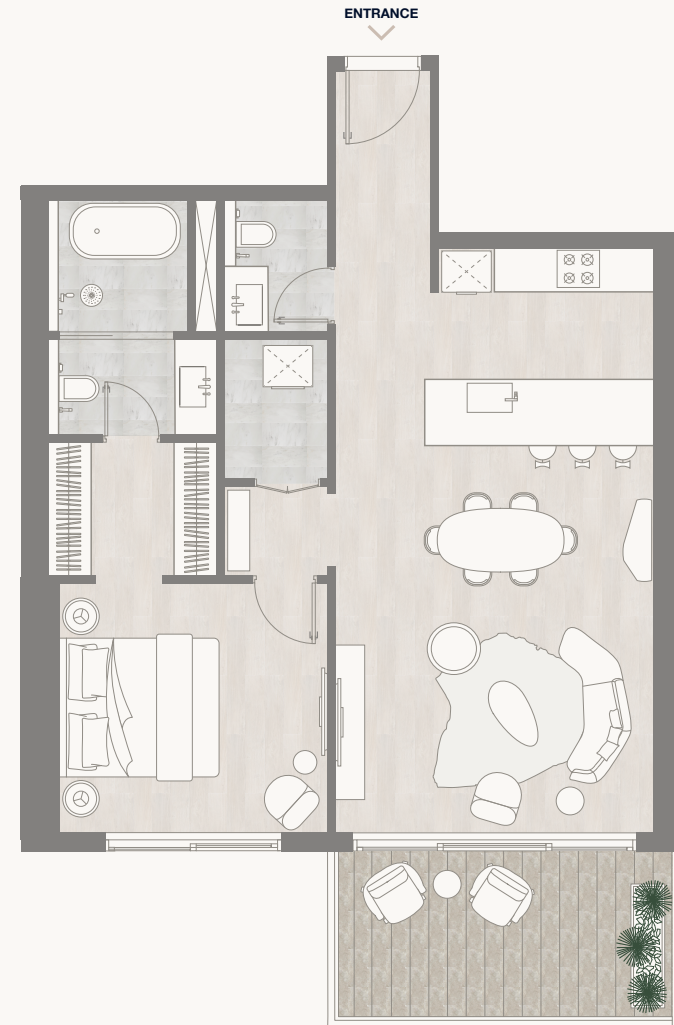


WILDLIFE SANCTUARY
VIEW



CREEK HARBOUR
VIEW

NORTH

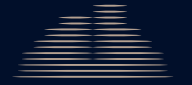


1. All dimensions are in imperial and metric, and measured to the structural elements and exclude wall finishes and construction tolerances. 2. All materials, dimensions, and drawings are approximate only. 3. Information is subject to change without notice, at developer's absolute discretion. 4. Actual area may vary from the stated area. 5. Balcony sizes may vary between units. 6. Drawings are not to scale. 7. All images used are for illustrative purposes only and do not represent the actual size, features, specifications, fittings, or furnishings. 8. The developer reserves the right to make revisions/alterations, at its absolute discretion, without any liability whatsoever.

1 BEDROOM – TYPE E

Floor 6–7

Internal Area	77.61 sq m	835.39 sq ft
Balcony Area	11.20 sq m	120.55 sq ft
Total Area	88.81 sq m	955.95 sq ft



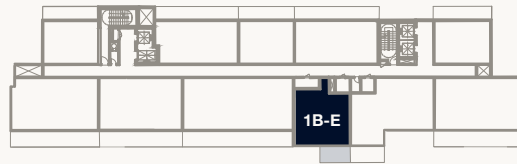
Kempinski Residences
The Creek

DUBAI

Tower 1



PARK
VIEW



1B-E



BURJ KHALIFA
VIEW

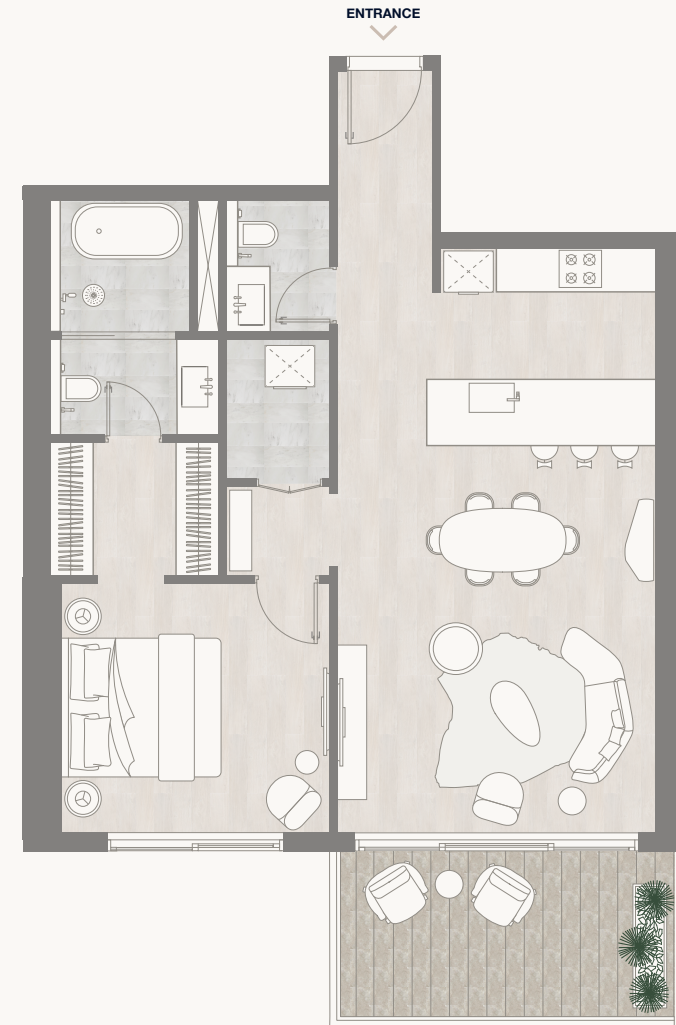


WILDLIFE SANCTUARY
VIEW



CREEK HARBOUR
VIEW

NORTH

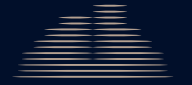


1. All dimensions are in imperial and metric, and measured to the structural elements and exclude wall finishes and construction tolerances. 2. All materials, dimensions, and drawings are approximate only. 3. Information is subject to change without notice, at developer's absolute discretion. 4. Actual area may vary from the stated area. 5. Balcony sizes may vary between units. 6. Drawings are not to scale. 7. All images used are for illustrative purposes only and do not represent the actual size, features, specifications, fittings, or furnishings. 8. The developer reserves the right to make revisions/alterations, at its absolute discretion, without any liability whatsoever.

1 BEDROOM – TYPE E

Floor 8–9

Internal Area	77.61 sq m	835.39 sq ft
Balcony Area	11.20 sq m	120.55 sq ft
Total Area	88.81 sq m	955.95 sq ft



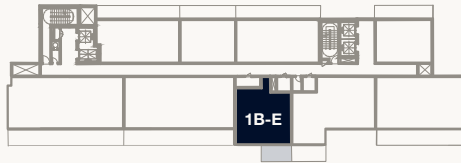
Kempinski Residences
The Creek

DUBAI

Tower 1



PARK
VIEW



BURJ KHALIFA
VIEW



WILDLIFE SANCTUARY
VIEW

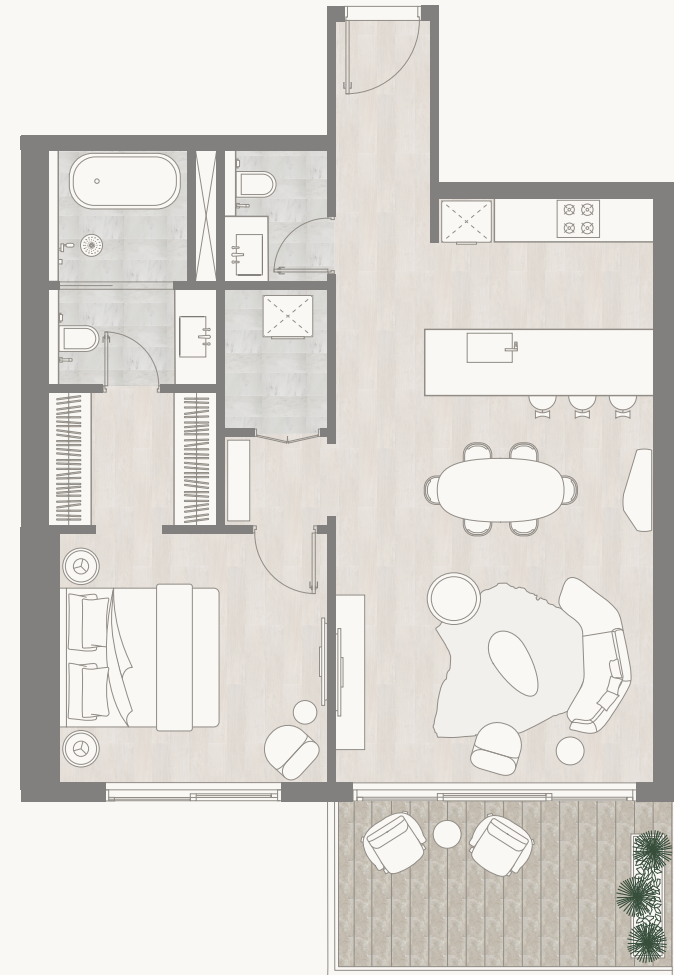


CREEK HARBOUR
VIEW

NORTH



ENTRANCE

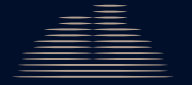


1. All dimensions are in imperial and metric, and measured to the structural elements and exclude wall finishes and construction tolerances. 2. All materials, dimensions, and drawings are approximate only. 3. Information is subject to change without notice, at developer's absolute discretion. 4. Actual area may vary from the stated area. 5. Balcony sizes may vary between units. 6. Drawings are not to scale. 7. All images used are for illustrative purposes only and do not represent the actual size, features, specifications, fittings, or furnishings. 8. The developer reserves the right to make revisions/alterations, at its absolute discretion, without any liability whatsoever.

1 BEDROOM – TYPE E

Floor 10–11

Internal Area	77.61 sq m	835.39 sq ft
Balcony Area	11.20 sq m	120.55 sq ft
Total Area	88.81 sq m	955.95 sq ft



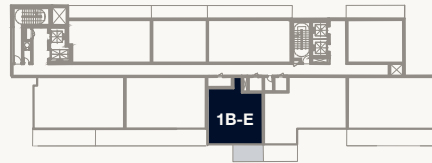
Kempinski Residences
The Creek

DUBAI

Tower 1



PARK
VIEW



1B-E



WILDLIFE SANCTUARY
VIEW

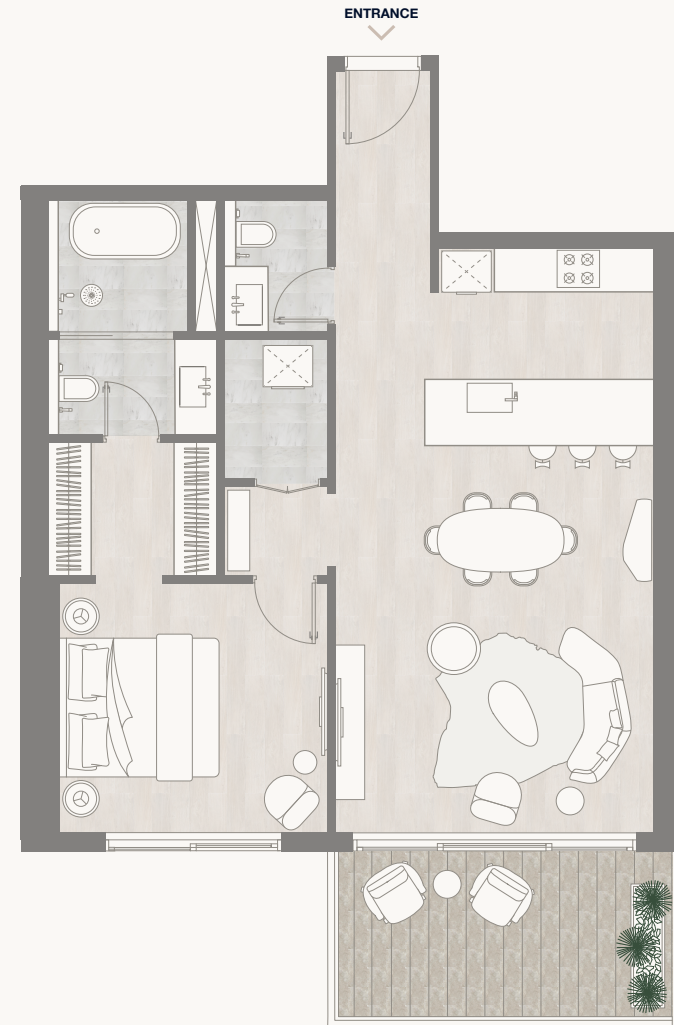


BURJ KHALIFA
VIEW



CREEK HARBOUR
VIEW

NORTH

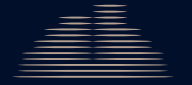


1. All dimensions are in imperial and metric, and measured to the structural elements and exclude wall finishes and construction tolerances. 2. All materials, dimensions, and drawings are approximate only. 3. Information is subject to change without notice, at developer's absolute discretion. 4. Actual area may vary from the stated area. 5. Balcony sizes may vary between units. 6. Drawings are not to scale. 7. All images used are for illustrative purposes only and do not represent the actual size, features, specifications, fittings, or furnishings. 8. The developer reserves the right to make revisions/alterations, at its absolute discretion, without any liability whatsoever.

2 BEDROOM – TYPE B

Floor G

Internal Area	110.01 sq m	1,184.15 sq ft
Balcony Area	40.42 sq m	435.11 sq ft
Total Area	150.43 sq m	1,619.26 sq ft



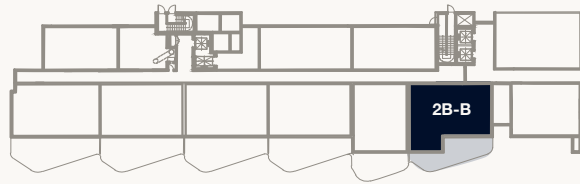
Kempinski Residences
The Creek

DUBAI

Tower 1



PARK
VIEW



2B-B



WILDLIFE SANCTUARY
VIEW



BURJ KHALIFA
VIEW



CREEK HARBOUR
VIEW

NORTH

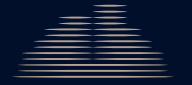


1. All dimensions are in imperial and metric, and measured to the structural elements and exclude wall finishes and construction tolerances. 2. All materials, dimensions, and drawings are approximate only. 3. Information is subject to change without notice, at developer's absolute discretion. 4. Actual area may vary from the stated area. 5. Balcony sizes may vary between units. 6. Drawings are not to scale. 7. All images used are for illustrative purposes only and do not represent the actual size, features, specifications, fittings, or furnishings. 8. The developer reserves the right to make revisions/alterations, at its absolute discretion, without any liability whatsoever.

2 BEDROOM – TYPE B

Floor 1–5

Internal Area	110.01 sq m	1,184.15 sq ft
Balcony Area	13.04 sq m	140.36 sq ft
Total Area	123.05 sq m	1,324.51 sq ft



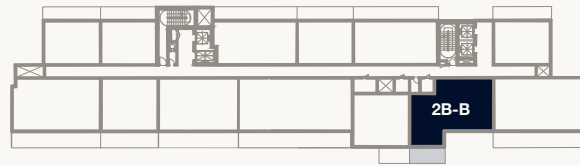
Kempinski Residences
The Creek

DUBAI

Tower 1



PARK
VIEW



2B-B



BURJ KHALIFA
VIEW



WILDLIFE SANCTUARY
VIEW



CREEK HARBOUR
VIEW

NORTH

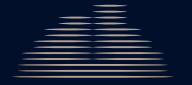


1. All dimensions are in imperial and metric, and measured to the structural elements and exclude wall finishes and construction tolerances. 2. All materials, dimensions, and drawings are approximate only. 3. Information is subject to change without notice, at developer's absolute discretion. 4. Actual area may vary from the stated area. 5. Balcony sizes may vary between units. 6. Drawings are not to scale. 7. All images used are for illustrative purposes only and do not represent the actual size, features, specifications, fittings, or furnishings. 8. The developer reserves the right to make revisions/alterations, at its absolute discretion, without any liability whatsoever.

2 BEDROOM – TYPE B

Floor 6–7

Internal Area	110.01 sq m	1,184.15 sq ft
Balcony Area	13.04 sq m	140.36 sq ft
Total Area	123.05 sq m	1,324.51 sq ft



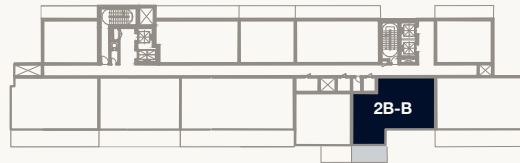
Kempinski Residences
The Creek

DUBAI

Tower 1



PARK
VIEW



2B-B



BURJ KHALIFA
VIEW



WILDLIFE SANCTUARY
VIEW



CREEK HARBOUR
VIEW

NORTH

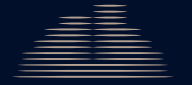


1. All dimensions are in imperial and metric, and measured to the structural elements and exclude wall finishes and construction tolerances. 2. All materials, dimensions, and drawings are approximate only. 3. Information is subject to change without notice, at developer's absolute discretion. 4. Actual area may vary from the stated area. 5. Balcony sizes may vary between units. 6. Drawings are not to scale. 7. All images used are for illustrative purposes only and do not represent the actual size, features, specifications, fittings, or furnishings. 8. The developer reserves the right to make revisions/alterations, at its absolute discretion, without any liability whatsoever.

2 BEDROOM – TYPE B

Floor 8–9

Internal Area	110.01 sq m	1,184.15 sq ft
Balcony Area	13.04 sq m	140.36 sq ft
Total Area	123.05 sq m	1,324.51 sq ft



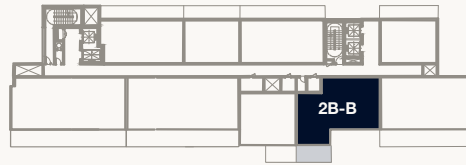
Kempinski Residences
The Creek

DUBAI

Tower 1



PARK
VIEW



2B-B



WILDLIFE SANCTUARY
VIEW



CREEK HARBOUR
VIEW



BURJ KHALIFA
VIEW

NORTH

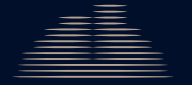


1. All dimensions are in imperial and metric, and measured to the structural elements and exclude wall finishes and construction tolerances. 2. All materials, dimensions, and drawings are approximate only. 3. Information is subject to change without notice, at developer's absolute discretion. 4. Actual area may vary from the stated area. 5. Balcony sizes may vary between units. 6. Drawings are not to scale. 7. All images used are for illustrative purposes only and do not represent the actual size, features, specifications, fittings, or furnishings. 8. The developer reserves the right to make revisions/alterations, at its absolute discretion, without any liability whatsoever.

2 BEDROOM – TYPE B

Floor 10–11

Internal Area	110.01 sq m	1,184.15 sq ft
Balcony Area	13.04 sq m	140.36 sq ft
Total Area	123.05 sq m	1,324.51 sq ft



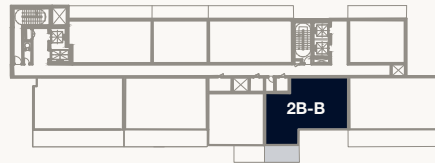
Kempinski Residences
The Creek

DUBAI

Tower 1



PARK
VIEW



2B-B



WILDLIFE SANCTUARY
VIEW



CREEK HARBOUR
VIEW



BURJ KHALIFA
VIEW

NORTH

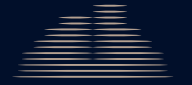


1. All dimensions are in imperial and metric, and measured to the structural elements and exclude wall finishes and construction tolerances. 2. All materials, dimensions, and drawings are approximate only. 3. Information is subject to change without notice, at developer's absolute discretion. 4. Actual area may vary from the stated area. 5. Balcony sizes may vary between units. 6. Drawings are not to scale. 7. All images used are for illustrative purposes only and do not represent the actual size, features, specifications, fittings, or furnishings. 8. The developer reserves the right to make revisions/alterations, at its absolute discretion, without any liability whatsoever.

2 BEDROOM – TYPE D

Floor 2–5

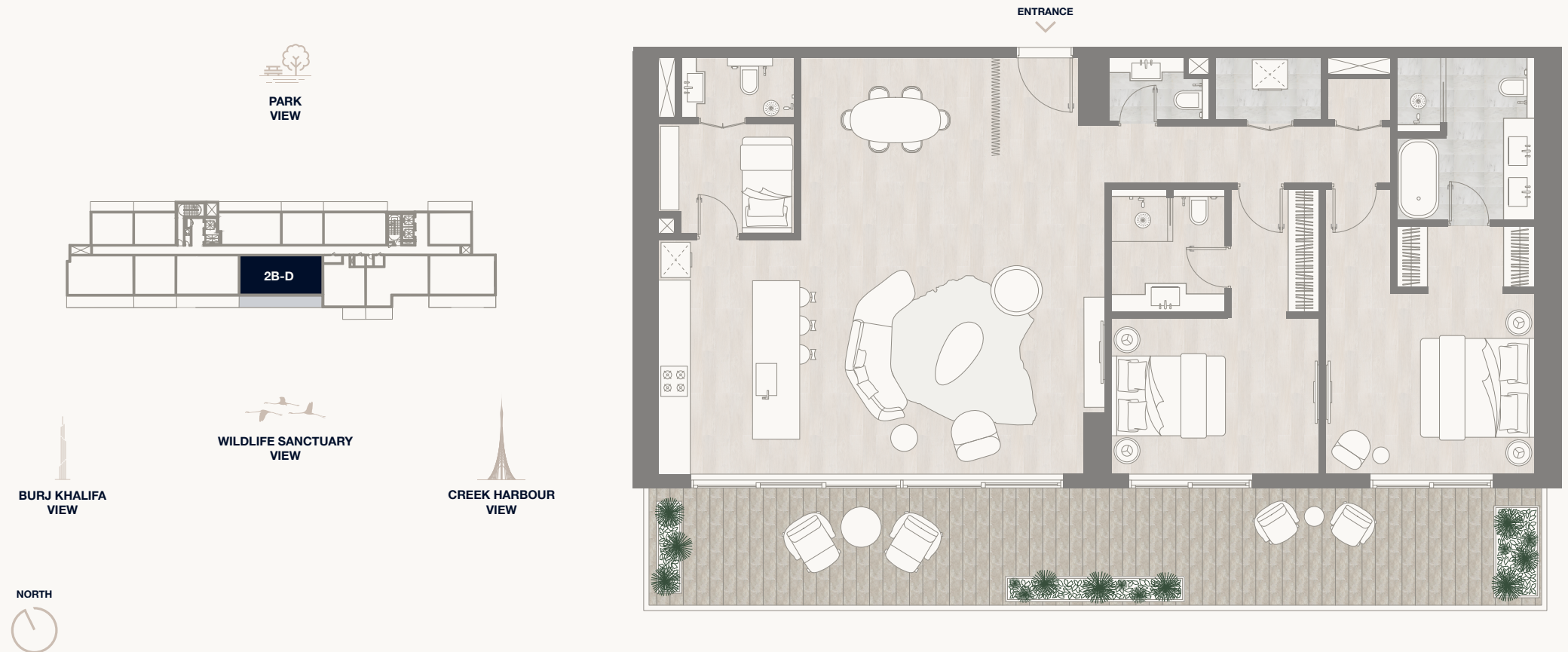
Internal Area	141.79 sq m	1,526.23 sq ft
Balcony Area	42.11 sq m	453.27 sq ft
Total Area	183.90 sq m	1,979.50 sq ft



Kempinski Residences
The Creek

DUBAI

Tower 1

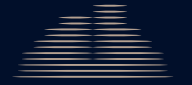


1. All dimensions are in imperial and metric, and measured to the structural elements and exclude wall finishes and construction tolerances. 2. All materials, dimensions, and drawings are approximate only. 3. Information is subject to change without notice, at developer's absolute discretion. 4. Actual area may vary from the stated area. 5. Balcony sizes may vary between units. 6. Drawings are not to scale. 7. All images used are for illustrative purposes only and do not represent the actual size, features, specifications, fittings, or furnishings. 8. The developer reserves the right to make revisions/alterations, at its absolute discretion, without any liability whatsoever.

2 BEDROOM – TYPE D

Floor 6–7

Internal Area	141.79 sq m	1,526.23 sq ft
Balcony Area	42.11 sq m	453.27 sq ft
Total Area	183.90 sq m	1,979.50 sq ft



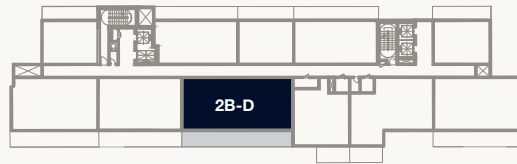
Kempinski Residences
The Creek

DUBAI

Tower 1



PARK
VIEW



WILDLIFE SANCTUARY
VIEW



BURJ KHALIFA
VIEW



CREEK HARBOUR
VIEW

NORTH



ENTRANCE

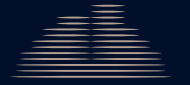


1. All dimensions are in imperial and metric, and measured to the structural elements and exclude wall finishes and construction tolerances. 2. All materials, dimensions, and drawings are approximate only. 3. Information is subject to change without notice, at developer's absolute discretion. 4. Actual area may vary from the stated area. 5. Balcony sizes may vary between units. 6. Drawings are not to scale. 7. All images used are for illustrative purposes only and do not represent the actual size, features, specifications, fittings, or furnishings. 8. The developer reserves the right to make revisions/alterations, at its absolute discretion, without any liability whatsoever.

2 BEDROOM – TYPE D

Floor 8–9

Internal Area	141.79 sq m	1,526.23 sq ft
Balcony Area	42.11 sq m	453.27 sq ft
Total Area	183.90 sq m	1,979.50 sq ft



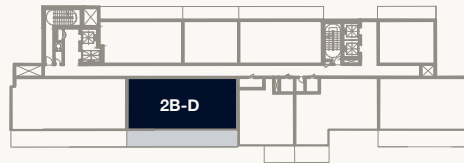
Kempinski Residences
The Creek

DUBAI

Tower 1



PARK
VIEW



WILDLIFE SANCTUARY
VIEW



BURJ KHALIFA
VIEW



CREEK HARBOUR
VIEW

NORTH



ENTRANCE

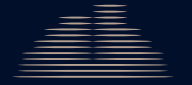


1. All dimensions are in imperial and metric, and measured to the structural elements and exclude wall finishes and construction tolerances. 2. All materials, dimensions, and drawings are approximate only. 3. Information is subject to change without notice, at developer's absolute discretion. 4. Actual area may vary from the stated area. 5. Balcony sizes may vary between units. 6. Drawings are not to scale. 7. All images used are for illustrative purposes only and do not represent the actual size, features, specifications, fittings, or furnishings. 8. The developer reserves the right to make revisions/alterations, at its absolute discretion, without any liability whatsoever.

2 BEDROOM DUPLEX – TYPE B

Floor 1, 3, 5 – Lower Level

Internal Area	179.23 sq m	1,929.23 sq ft
Balcony Area	44.35 sq m	477.38 sq ft
Total Area	223.58 sq m	2,406.62 sq ft



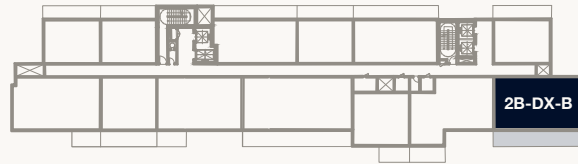
Kempinski Residences
The Creek

DUBAI

Tower 1



PARK
VIEW



2B-DX-B



WILDLIFE SANCTUARY
VIEW



BURJ KHALIFA
VIEW



CREEK HARBOUR
VIEW

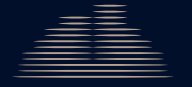
NORTH



1. All dimensions are in imperial and metric, and measured to the structural elements and exclude wall finishes and construction tolerances. 2. All materials, dimensions, and drawings are approximate only. 3. Information is subject to change without notice, at developer's absolute discretion. 4. Actual area may vary from the stated area. 5. Balcony sizes may vary between units. 6. Drawings are not to scale. 7. All images used are for illustrative purposes only and do not represent the actual size, features, specifications, fittings, or furnishings. 8. The developer reserves the right to make revisions/alterations, at its absolute discretion, without any liability whatsoever.

2 BEDROOM DUPLEX – TYPE B

Floor 2, 4, 6 – Upper Level



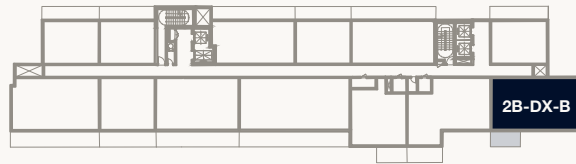
Kempinski Residences
The Creek

DUBAI

Tower 1



PARK
VIEW



2B-DX-B



BURJ KHALIFA
VIEW

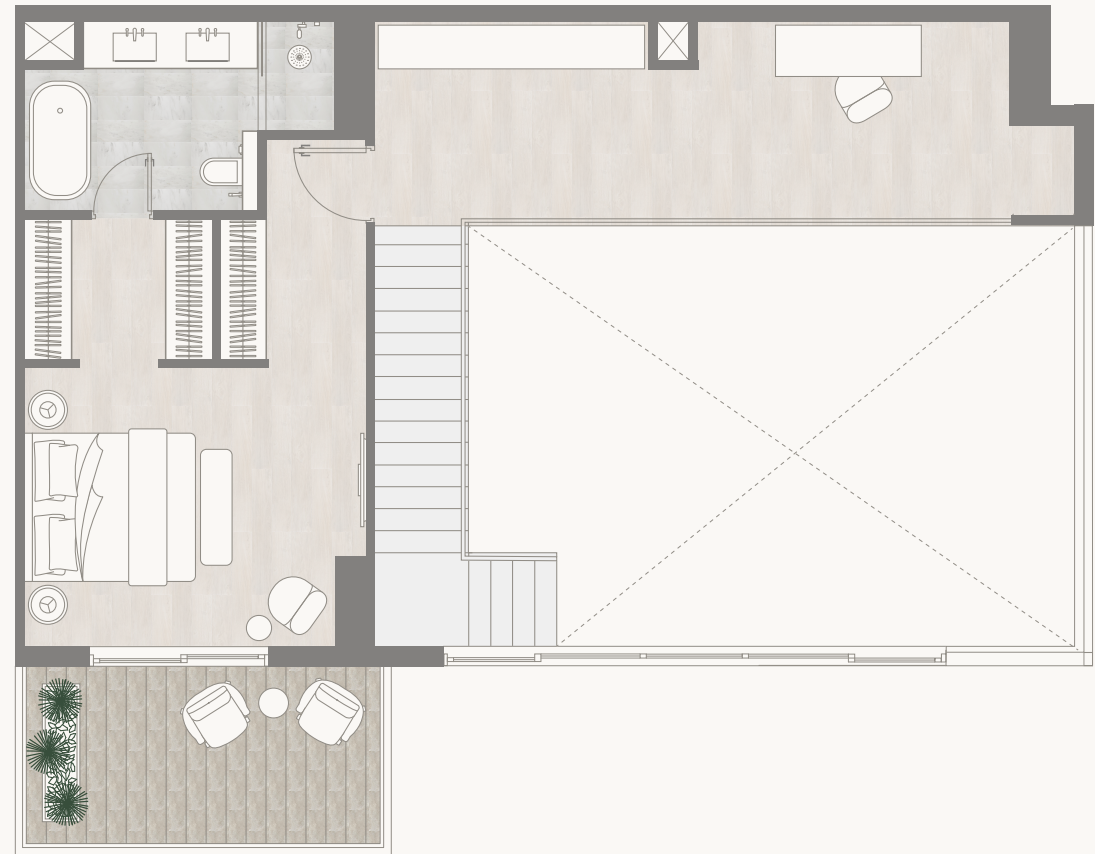


WILDLIFE SANCTUARY
VIEW



CREEK HARBOUR
VIEW

NORTH

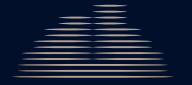


1. All dimensions are in imperial and metric, and measured to the structural elements and exclude wall finishes and construction tolerances. 2. All materials, dimensions, and drawings are approximate only. 3. Information is subject to change without notice, at developer's absolute discretion. 4. Actual area may vary from the stated area. 5. Balcony sizes may vary between units. 6. Drawings are not to scale. 7. All images used are for illustrative purposes only and do not represent the actual size, features, specifications, fittings, or furnishings. 8. The developer reserves the right to make revisions/alterations, at its absolute discretion, without any liability whatsoever.

2 BEDROOM DUPLEX – TYPE B

Floor 7 – Lower Level

Internal Area	179.23 sq m	1,929.23 sq ft
Balcony Area	44.35 sq m	477.38 sq ft
Total Area	223.58 sq m	2,406.62 sq ft



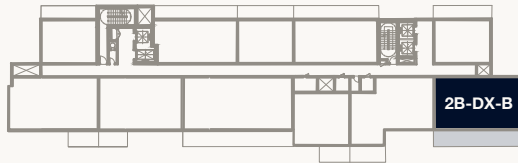
Kempinski Residences
The Creek

DUBAI

Tower 1



PARK
VIEW



2B-DX-B



WILDLIFE SANCTUARY
VIEW



CREEK HARBOUR
VIEW



BURJ KHALIFA
VIEW

NORTH



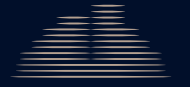
ENTRANCE



1. All dimensions are in imperial and metric, and measured to the structural elements and exclude wall finishes and construction tolerances. 2. All materials, dimensions, and drawings are approximate only. 3. Information is subject to change without notice, at developer's absolute discretion. 4. Actual area may vary from the stated area. 5. Balcony sizes may vary between units. 6. Drawings are not to scale. 7. All images used are for illustrative purposes only and do not represent the actual size, features, specifications, fittings, or furnishings. 8. The developer reserves the right to make revisions/alterations, at its absolute discretion, without any liability whatsoever.

2 BEDROOM DUPLEX – TYPE B

Floor 8 – Upper Level



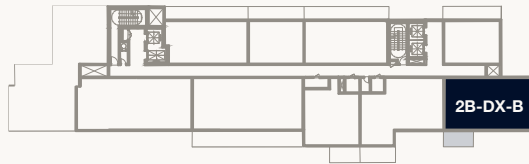
Kempinski Residences
The Creek

DUBAI

Tower 1



PARK
VIEW



2B-DX-B



WILDLIFE SANCTUARY
VIEW

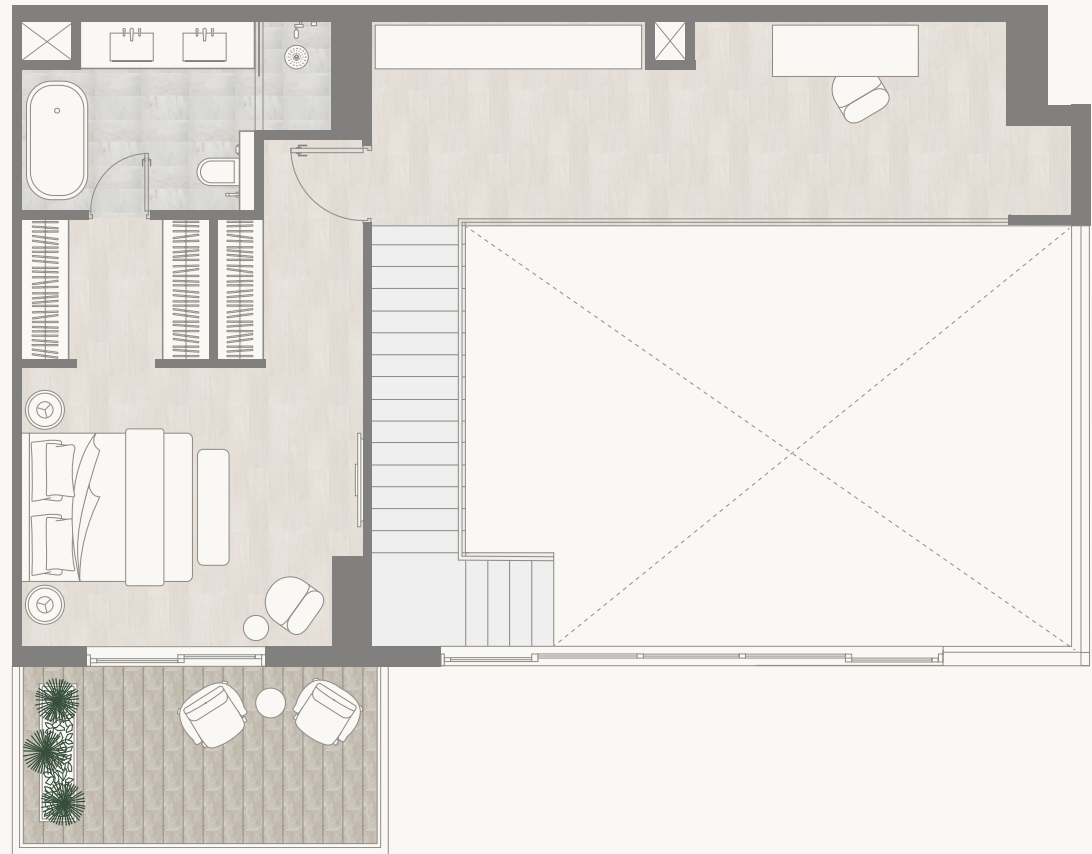


BURJ KHALIFA
VIEW



CREEK HARBOUR
VIEW

NORTH

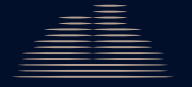


1. All dimensions are in imperial and metric, and measured to the structural elements and exclude wall finishes and construction tolerances. 2. All materials, dimensions, and drawings are approximate only. 3. Information is subject to change without notice, at developer's absolute discretion. 4. Actual area may vary from the stated area. 5. Balcony sizes may vary between units. 6. Drawings are not to scale. 7. All images used are for illustrative purposes only and do not represent the actual size, features, specifications, fittings, or furnishings. 8. The developer reserves the right to make revisions/alterations, at its absolute discretion, without any liability whatsoever.

2 BEDROOM DUPLEX – TYPE B

Floor 9 – Lower Level

Internal Area	179.23 sq m	1,929.23 sq ft
Balcony Area	44.35 sq m	477.38 sq ft
Total Area	223.58 sq m	2,406.62 sq ft



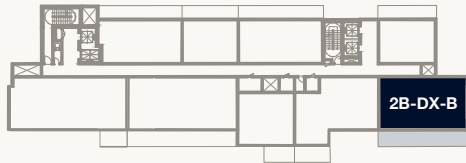
Kempinski Residences
The Creek

DUBAI

Tower 1



PARK
VIEW



2B-DX-B



WILDLIFE SANCTUARY
VIEW



CREEK HARBOUR
VIEW



BURJ KHALIFA
VIEW

NORTH



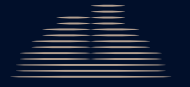
ENTRANCE



1. All dimensions are in imperial and metric, and measured to the structural elements and exclude wall finishes and construction tolerances. 2. All materials, dimensions, and drawings are approximate only. 3. Information is subject to change without notice, at developer's absolute discretion. 4. Actual area may vary from the stated area. 5. Balcony sizes may vary between units. 6. Drawings are not to scale. 7. All images used are for illustrative purposes only and do not represent the actual size, features, specifications, fittings, or furnishings. 8. The developer reserves the right to make revisions/alterations, at its absolute discretion, without any liability whatsoever.

2 BEDROOM DUPLEX – TYPE B

Floor 10 – Upper Level



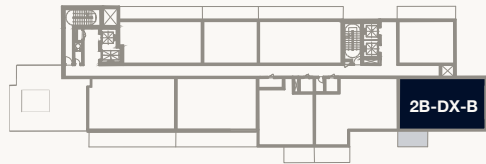
Kempinski Residences
The Creek

DUBAI

Tower 1



PARK
VIEW



2B-DX-B



WILDLIFE SANCTUARY
VIEW

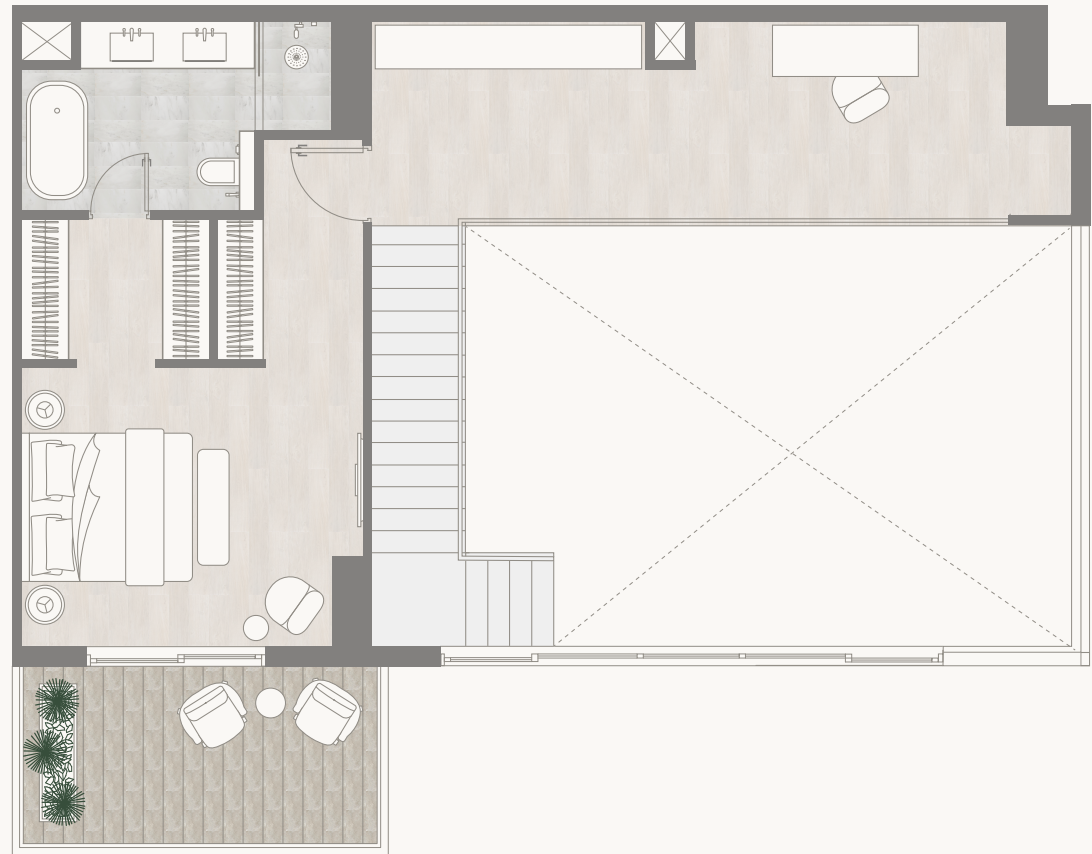


BURJ KHALIFA
VIEW



CREEK HARBOUR
VIEW

NORTH

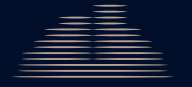


1. All dimensions are in imperial and metric, and measured to the structural elements and exclude wall finishes and construction tolerances. 2. All materials, dimensions, and drawings are approximate only. 3. Information is subject to change without notice, at developer's absolute discretion. 4. Actual area may vary from the stated area. 5. Balcony sizes may vary between units. 6. Drawings are not to scale. 7. All images used are for illustrative purposes only and do not represent the actual size, features, specifications, fittings, or furnishings. 8. The developer reserves the right to make revisions/alterations, at its absolute discretion, without any liability whatsoever.

2 BEDROOM DUPLEX – TYPE B

Floor 11 – Lower Level

Internal Area	179.23 sq m	1,929.23 sq ft
Balcony Area	44.35 sq m	477.38 sq ft
Total Area	223.58 sq m	2,406.62 sq ft



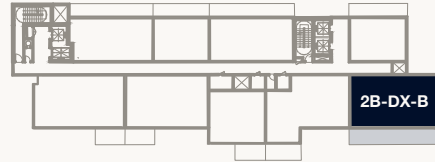
Kempinski Residences
The Creek

DUBAI

Tower 1



PARK
VIEW



2B-DX-B



WILDLIFE SANCTUARY
VIEW



BURJ KHALIFA
VIEW



CREEK HARBOUR
VIEW

NORTH



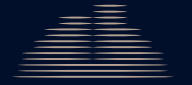
ENTRANCE



1. All dimensions are in imperial and metric, and measured to the structural elements and exclude wall finishes and construction tolerances. 2. All materials, dimensions, and drawings are approximate only. 3. Information is subject to change without notice, at developer's absolute discretion. 4. Actual area may vary from the stated area. 5. Balcony sizes may vary between units. 6. Drawings are not to scale. 7. All images used are for illustrative purposes only and do not represent the actual size, features, specifications, fittings, or furnishings. 8. The developer reserves the right to make revisions/alterations, at its absolute discretion, without any liability whatsoever.

2 BEDROOM DUPLEX – TYPE B

Floor 12 – Upper Level



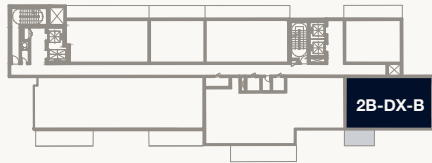
Kempinski Residences
The Creek

DUBAI

Tower 1



PARK
VIEW



2B-DX-B



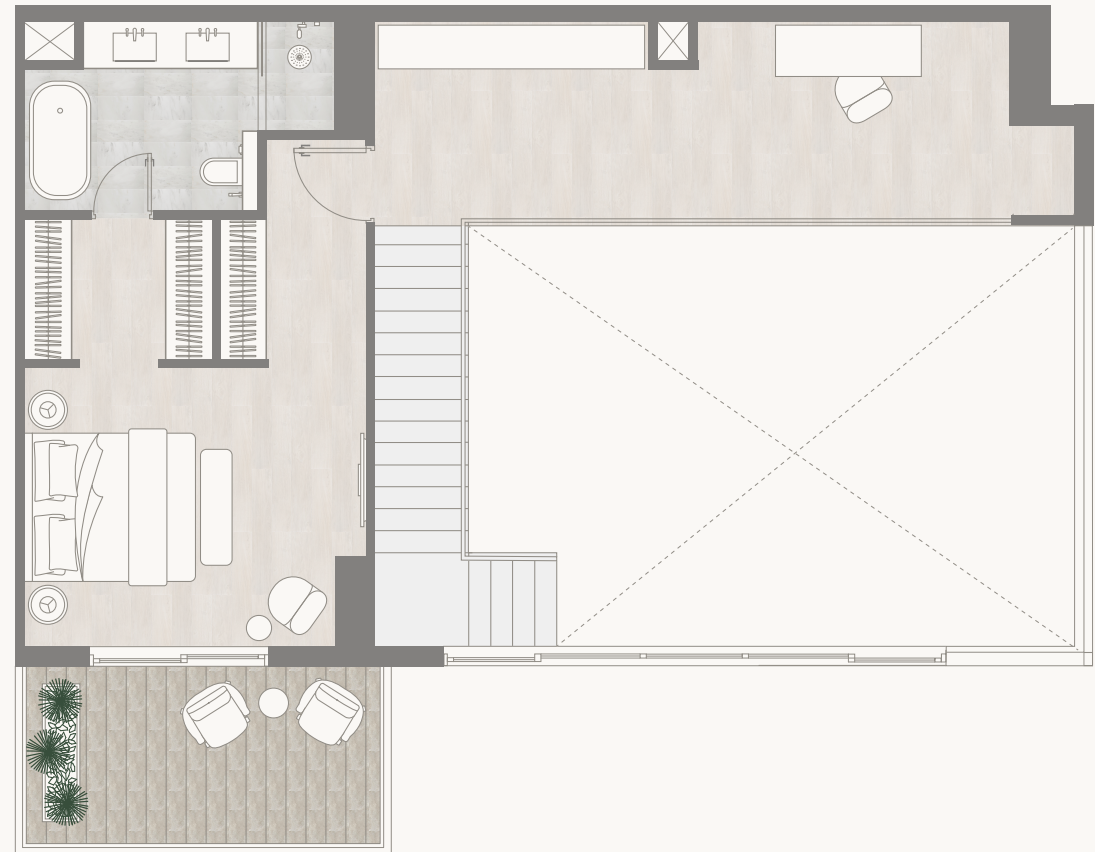
WILDLIFE SANCTUARY
VIEW



BURJ KHALIFA
VIEW



CREEK HARBOUR
VIEW



NORTH

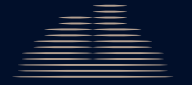


1. All dimensions are in imperial and metric, and measured to the structural elements and exclude wall finishes and construction tolerances. 2. All materials, dimensions, and drawings are approximate only. 3. Information is subject to change without notice, at developer's absolute discretion. 4. Actual area may vary from the stated area. 5. Balcony sizes may vary between units. 6. Drawings are not to scale. 7. All images used are for illustrative purposes only and do not represent the actual size, features, specifications, fittings, or furnishings. 8. The developer reserves the right to make revisions/alterations, at its absolute discretion, without any liability whatsoever.

3 BEDROOM – TYPE D

Floor 12

Internal Area	217.38 sq m	2,339.88 sq ft
Balcony Area	43.82 sq m	471.67 sq ft
Total Area	261.20 sq m	2,811.55 sq ft



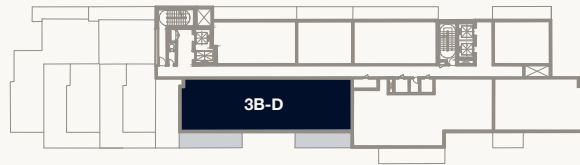
Kempinski Residences
The Creek

DUBAI

Tower 1



PARK
VIEW



WILDLIFE SANCTUARY
VIEW



BURJ KHALIFA
VIEW



CREEK HARBOUR
VIEW

ENTRANCE



NORTH

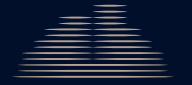


1. All dimensions are in imperial and metric, and measured to the structural elements and exclude wall finishes and construction tolerances. 2. All materials, dimensions, and drawings are approximate only. 3. Information is subject to change without notice, at developer's absolute discretion. 4. Actual area may vary from the stated area. 5. Balcony sizes may vary between units. 6. Drawings are not to scale. 7. All images used are for illustrative purposes only and do not represent the actual size, features, specifications, fittings, or furnishings. 8. The developer reserves the right to make revisions/alterations, at its absolute discretion, without any liability whatsoever.

3 BEDROOM DUPLEX – TYPE A

Floor G – Lower Level

Internal Area	191.38 sq m	2,060.01 sq ft
Balcony Area	64.19 sq m	690.94 sq ft
Total Area	255.57 sq m	2,750.96 sq ft



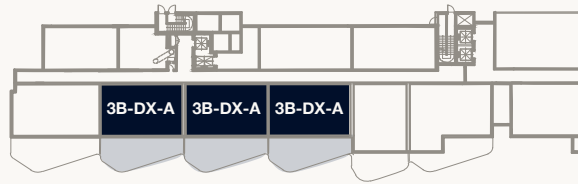
Kempinski Residences
The Creek

DUBAI

Tower 1



PARK
VIEW



3B-DX-A 3B-DX-A 3B-DX-A



WILDLIFE SANCTUARY
VIEW



BURJ KHALIFA
VIEW



CREEK HARBOUR
VIEW

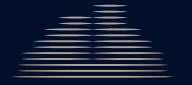
NORTH



1. All dimensions are in imperial and metric, and measured to the structural elements and exclude wall finishes and construction tolerances. 2. All materials, dimensions, and drawings are approximate only. 3. Information is subject to change without notice, at developer's absolute discretion. 4. Actual area may vary from the stated area. 5. Balcony sizes may vary between units. 6. Drawings are not to scale. 7. All images used are for illustrative purposes only and do not represent the actual size, features, specifications, fittings, or furnishings. 8. The developer reserves the right to make revisions/alterations, at its absolute discretion, without any liability whatsoever.

3 BEDROOM DUPLEX – TYPE A

Floor 1 – Upper Level



Kempinski Residences
The Creek

DUBAI

Tower 1



PARK
VIEW



BURJ KHALIFA
VIEW



WILDLIFE SANCTUARY
VIEW



CREEK HARBOUR
VIEW



NORTH

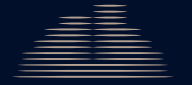


1. All dimensions are in imperial and metric, and measured to the structural elements and exclude wall finishes and construction tolerances. 2. All materials, dimensions, and drawings are approximate only. 3. Information is subject to change without notice, at developer's absolute discretion. 4. Actual area may vary from the stated area. 5. Balcony sizes may vary between units. 6. Drawings are not to scale. 7. All images used are for illustrative purposes only and do not represent the actual size, features, specifications, fittings, or furnishings. 8. The developer reserves the right to make revisions/alterations, at its absolute discretion, without any liability whatsoever.

3 BEDROOM DUPLEX – TYPE A

Floor 2 & 4 – Lower Level

Internal Area	191.38 sq m	2,060.01 sq ft
Balcony Area	42.41 sq m	456.50 sq ft
Total Area	233.79 sq m	2,516.52 sq ft



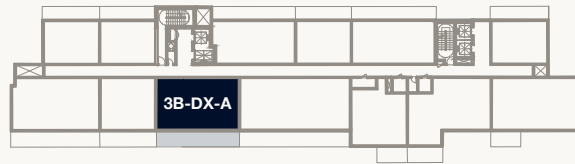
Kempinski Residences
The Creek

DUBAI

Tower 1



PARK
VIEW



3B-DX-A



WILDLIFE SANCTUARY
VIEW



BURJ KHALIFA
VIEW



CREEK HARBOUR
VIEW

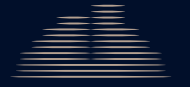
NORTH



1. All dimensions are in imperial and metric, and measured to the structural elements and exclude wall finishes and construction tolerances. 2. All materials, dimensions, and drawings are approximate only. 3. Information is subject to change without notice, at developer's absolute discretion. 4. Actual area may vary from the stated area. 5. Balcony sizes may vary between units. 6. Drawings are not to scale. 7. All images used are for illustrative purposes only and do not represent the actual size, features, specifications, fittings, or furnishings. 8. The developer reserves the right to make revisions/alterations, at its absolute discretion, without any liability whatsoever.

3 BEDROOM DUPLEX – TYPE A

Floor 3 & 5 – Upper Level



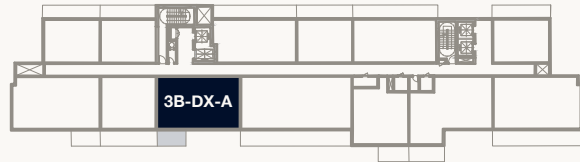
Kempinski Residences
The Creek

DUBAI

Tower 1



PARK
VIEW



3B-DX-A



WILDLIFE SANCTUARY
VIEW



BURJ KHALIFA
VIEW



CREEK HARBOUR
VIEW



NORTH

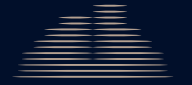


1. All dimensions are in imperial and metric, and measured to the structural elements and exclude wall finishes and construction tolerances. 2. All materials, dimensions, and drawings are approximate only. 3. Information is subject to change without notice, at developer's absolute discretion. 4. Actual area may vary from the stated area. 5. Balcony sizes may vary between units. 6. Drawings are not to scale. 7. All images used are for illustrative purposes only and do not represent the actual size, features, specifications, fittings, or furnishings. 8. The developer reserves the right to make revisions/alterations, at its absolute discretion, without any liability whatsoever.

3 BEDROOM DUPLEX – TYPE A

Floor 6 – Lower Level

Internal Area	191.38 sq m	2,060.01 sq ft
Balcony Area	42.41 sq m	456.50 sq ft
Total Area	233.79 sq m	2,516.52 sq ft



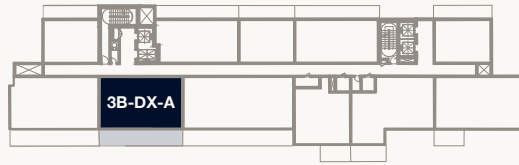
Kempinski Residences
The Creek

DUBAI

Tower 1



PARK
VIEW



3B-DX-A



WILDLIFE SANCTUARY
VIEW



CREEK HARBOUR
VIEW



BURJ KHALIFA
VIEW



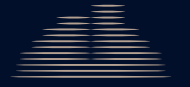
NORTH



1. All dimensions are in imperial and metric, and measured to the structural elements and exclude wall finishes and construction tolerances. 2. All materials, dimensions, and drawings are approximate only. 3. Information is subject to change without notice, at developer's absolute discretion. 4. Actual area may vary from the stated area. 5. Balcony sizes may vary between units. 6. Drawings are not to scale. 7. All images used are for illustrative purposes only and do not represent the actual size, features, specifications, fittings, or furnishings. 8. The developer reserves the right to make revisions/alterations, at its absolute discretion, without any liability whatsoever.

3 BEDROOM DUPLEX – TYPE A

Floor 7 – Upper Level



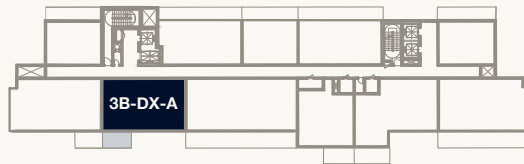
Kempinski Residences
The Creek

DUBAI

Tower 1



PARK
VIEW



3B-DX-A



WILDLIFE SANCTUARY
VIEW



BURJ KHALIFA
VIEW



CREEK HARBOUR
VIEW



NORTH

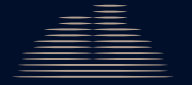


1. All dimensions are in imperial and metric, and measured to the structural elements and exclude wall finishes and construction tolerances. 2. All materials, dimensions, and drawings are approximate only. 3. Information is subject to change without notice, at developer's absolute discretion. 4. Actual area may vary from the stated area. 5. Balcony sizes may vary between units. 6. Drawings are not to scale. 7. All images used are for illustrative purposes only and do not represent the actual size, features, specifications, fittings, or furnishings. 8. The developer reserves the right to make revisions/alterations, at its absolute discretion, without any liability whatsoever.

3 BEDROOM DUPLEX – TYPE A

Floor 10 – Lower Level

Internal Area	191.38 sq m	2,060.01 sq ft
Balcony Area	42.41 sq m	456.50 sq ft
Total Area	233.79 sq m	2,516.52 sq ft



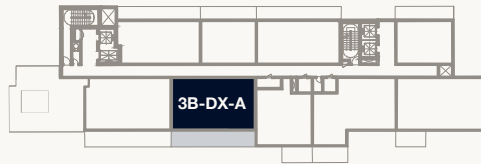
Kempinski Residences
The Creek

DUBAI

Tower 1



PARK
VIEW



WILDLIFE SANCTUARY
VIEW



BURJ KHALIFA
VIEW



CREEK HARBOUR
VIEW

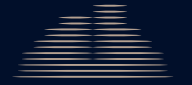
NORTH



1. All dimensions are in imperial and metric, and measured to the structural elements and exclude wall finishes and construction tolerances. 2. All materials, dimensions, and drawings are approximate only. 3. Information is subject to change without notice, at developer's absolute discretion. 4. Actual area may vary from the stated area. 5. Balcony sizes may vary between units. 6. Drawings are not to scale. 7. All images used are for illustrative purposes only and do not represent the actual size, features, specifications, fittings, or furnishings. 8. The developer reserves the right to make revisions/alterations, at its absolute discretion, without any liability whatsoever.

3 BEDROOM DUPLEX – TYPE A

Floor 11 – Upper Level



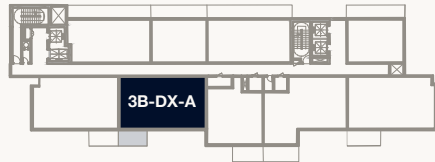
Kempinski Residences
The Creek

DUBAI

Tower 1



PARK
VIEW



WILDLIFE SANCTUARY
VIEW



BURJ KHALIFA
VIEW



CREEK HARBOUR
VIEW



NORTH

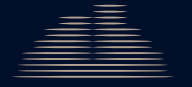


1. All dimensions are in imperial and metric, and measured to the structural elements and exclude wall finishes and construction tolerances. 2. All materials, dimensions, and drawings are approximate only. 3. Information is subject to change without notice, at developer's absolute discretion. 4. Actual area may vary from the stated area. 5. Balcony sizes may vary between units. 6. Drawings are not to scale. 7. All images used are for illustrative purposes only and do not represent the actual size, features, specifications, fittings, or furnishings. 8. The developer reserves the right to make revisions/alterations, at its absolute discretion, without any liability whatsoever.

3 BEDROOM DUPLEX – TYPE B

Floor G – Lower Level

Internal Area	189.13 sq m	2,035.80 sq ft
Balcony/Terrace Area	66.30 sq m	713.65 sq ft
Total Area	255.43 sq m	2,749.45 sq ft



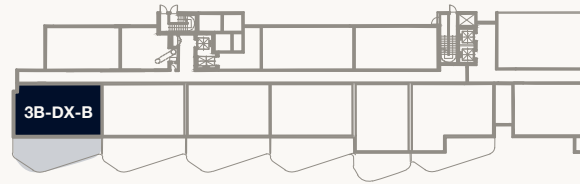
Kempinski Residences
The Creek

DUBAI

Tower 1



PARK
VIEW



BURJ KHALIFA
VIEW



WILDLIFE SANCTUARY
VIEW



CREEK HARBOUR
VIEW

NORTH



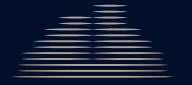
ENTRANCE



1. All dimensions are in imperial and metric, and measured to the structural elements and exclude wall finishes and construction tolerances. 2. All materials, dimensions, and drawings are approximate only. 3. Information is subject to change without notice, at developer's absolute discretion. 4. Actual area may vary from the stated area. 5. Balcony sizes may vary between units. 6. Drawings are not to scale. 7. All images used are for illustrative purposes only and do not represent the actual size, features, specifications, fittings, or furnishings. 8. The developer reserves the right to make revisions/alterations, at its absolute discretion, without any liability whatsoever.

3 BEDROOM DUPLEX – TYPE B

Floor 1 – Upper Level



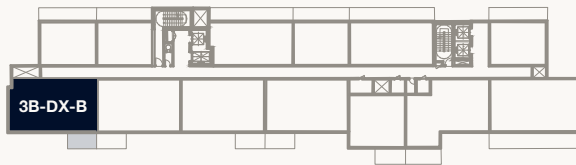
Kempinski Residences
The Creek

DUBAI

Tower 1



PARK
VIEW



3B-DX-B



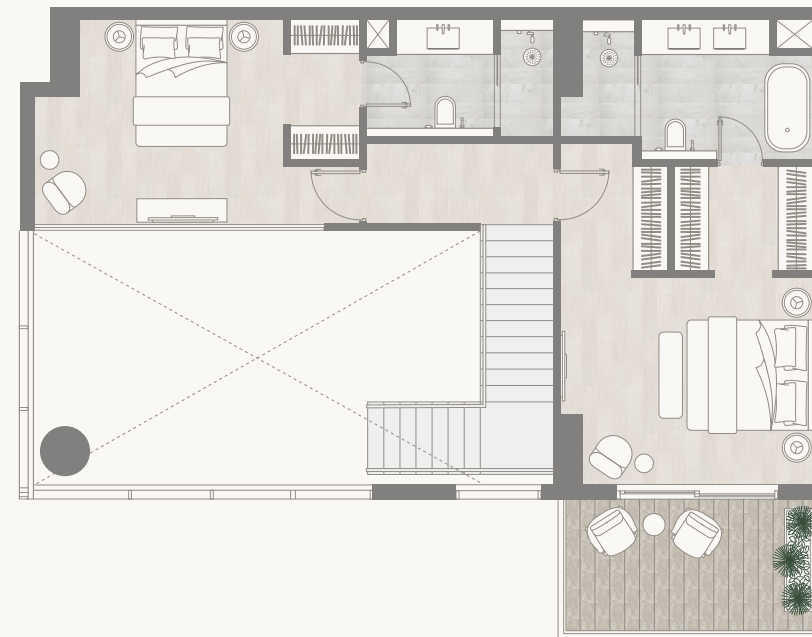
WILDLIFE SANCTUARY
VIEW



BURJ KHALIFA
VIEW



CREEK HARBOUR
VIEW



NORTH

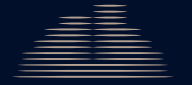


1. All dimensions are in imperial and metric, and measured to the structural elements and exclude wall finishes and construction tolerances. 2. All materials, dimensions, and drawings are approximate only. 3. Information is subject to change without notice, at developer's absolute discretion. 4. Actual area may vary from the stated area. 5. Balcony sizes may vary between units. 6. Drawings are not to scale. 7. All images used are for illustrative purposes only and do not represent the actual size, features, specifications, fittings, or furnishings. 8. The developer reserves the right to make revisions/alterations, at its absolute discretion, without any liability whatsoever.

3 BEDROOM DUPLEX – TYPE B

Floor 2 & 4 – Lower Level

Internal Area	189.13 sq m	2,035.80 sq ft
Balcony/Terrace Area	43.80 sq m	471.45 sq ft
Total Area	232.93 sq m	2,507.25 sq ft



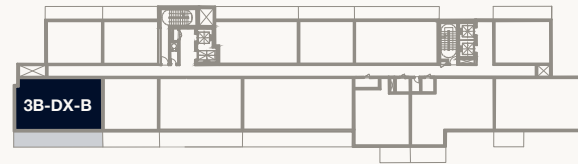
Kempinski Residences
The Creek

DUBAI

Tower 1



PARK
VIEW



3B-DX-B



BURJ KHALIFA
VIEW



WILDLIFE SANCTUARY
VIEW



CREEK HARBOUR
VIEW

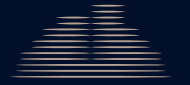
NORTH



1. All dimensions are in imperial and metric, and measured to the structural elements and exclude wall finishes and construction tolerances. 2. All materials, dimensions, and drawings are approximate only. 3. Information is subject to change without notice, at developer's absolute discretion. 4. Actual area may vary from the stated area. 5. Balcony sizes may vary between units. 6. Drawings are not to scale. 7. All images used are for illustrative purposes only and do not represent the actual size, features, specifications, fittings, or furnishings. 8. The developer reserves the right to make revisions/alterations, at its absolute discretion, without any liability whatsoever.

3 BEDROOM DUPLEX – TYPE B

Floor 3 & 5 – Upper Level



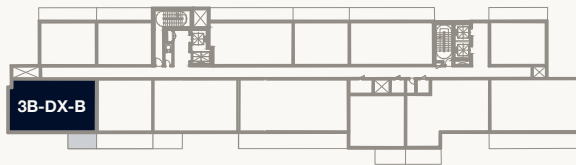
Kempinski Residences
The Creek

DUBAI

Tower 1



PARK
VIEW



3B-DX-B



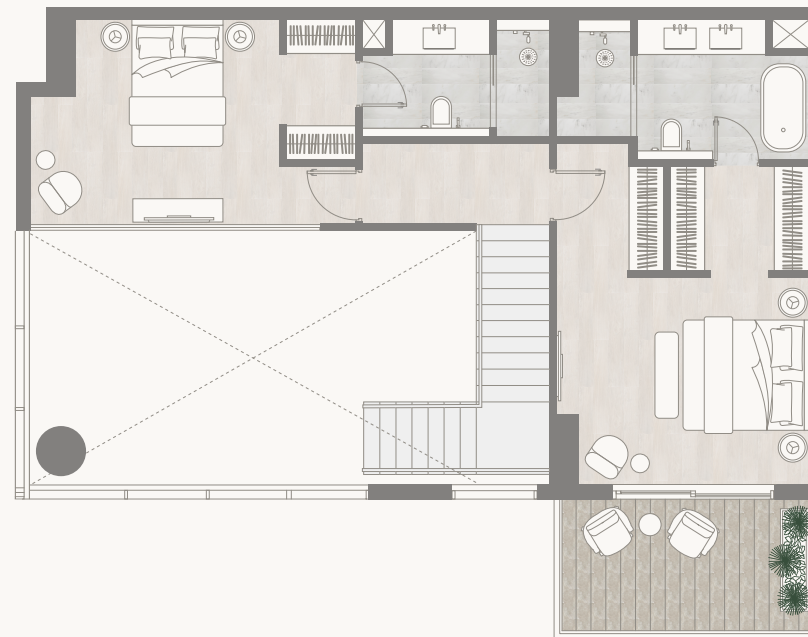
WILDLIFE SANCTUARY
VIEW



CREEK HARBOUR
VIEW



BURJ KHALIFA
VIEW



NORTH

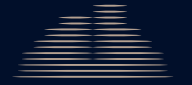


1. All dimensions are in imperial and metric, and measured to the structural elements and exclude wall finishes and construction tolerances. 2. All materials, dimensions, and drawings are approximate only. 3. Information is subject to change without notice, at developer's absolute discretion. 4. Actual area may vary from the stated area. 5. Balcony sizes may vary between units. 6. Drawings are not to scale. 7. All images used are for illustrative purposes only and do not represent the actual size, features, specifications, fittings, or furnishings. 8. The developer reserves the right to make revisions/alterations, at its absolute discretion, without any liability whatsoever.

3 BEDROOM DUPLEX – TYPE B

Floor 6 – Lower Level

Internal Area	189.13 sq m	2,035.80 sq ft
Balcony/Terrace Area	201.76 sq m	2,171.70 sq ft
Total Area	390.89 sq m	4,207.50 sq ft



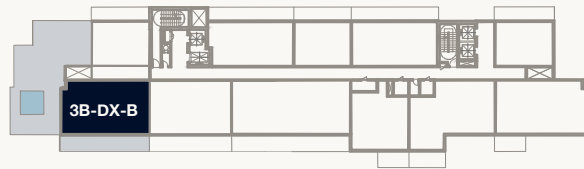
Kempinski Residences
The Creek

DUBAI

Tower 1



PARK
VIEW



3B-DX-B



WILDLIFE SANCTUARY
VIEW



BURJ KHALIFA
VIEW



CREEK HARBOUR
VIEW

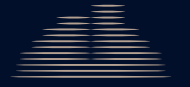
NORTH



1. All dimensions are in imperial and metric, and measured to the structural elements and exclude wall finishes and construction tolerances. 2. All materials, dimensions, and drawings are approximate only. 3. Information is subject to change without notice, at developer's absolute discretion. 4. Actual area may vary from the stated area. 5. Balcony sizes may vary between units. 6. Drawings are not to scale. 7. All images used are for illustrative purposes only and do not represent the actual size, features, specifications, fittings, or furnishings. 8. The developer reserves the right to make revisions/alterations, at its absolute discretion, without any liability whatsoever.

3 BEDROOM DUPLEX – TYPE B

Floor 7 – Upper Level



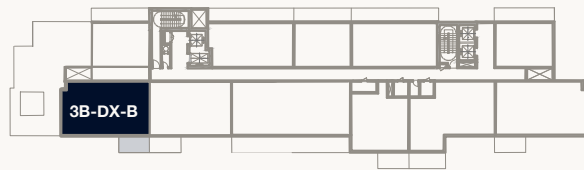
Kempinski Residences
The Creek

DUBAI

Tower 1



PARK
VIEW



3B-DX-B



WILDLIFE SANCTUARY
VIEW

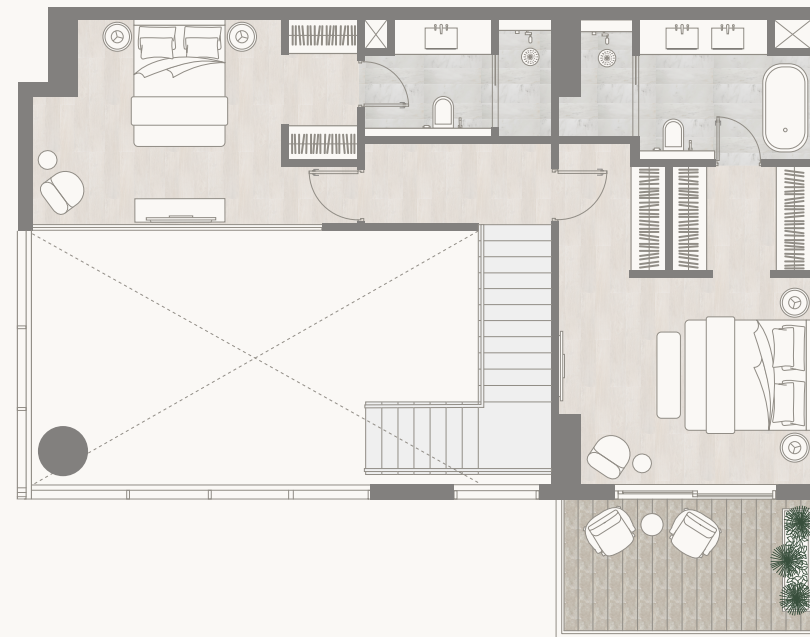


CREEK HARBOUR
VIEW



BURJ KHALIFA
VIEW

NORTH

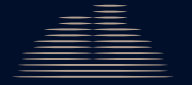


1. All dimensions are in imperial and metric, and measured to the structural elements and exclude wall finishes and construction tolerances. 2. All materials, dimensions, and drawings are approximate only. 3. Information is subject to change without notice, at developer's absolute discretion. 4. Actual area may vary from the stated area. 5. Balcony sizes may vary between units. 6. Drawings are not to scale. 7. All images used are for illustrative purposes only and do not represent the actual size, features, specifications, fittings, or furnishings. 8. The developer reserves the right to make revisions/alterations, at its absolute discretion, without any liability whatsoever.

3 BEDROOM DUPLEX – TYPE B

Floor 10 – Lower Level

Internal Area	189.13 sq m	2,035.80 sq ft
Balcony/Terrace Area	123.95 sq m	1,334.24 sq ft
Total Area	313.08 sq m	3,370.03 sq ft



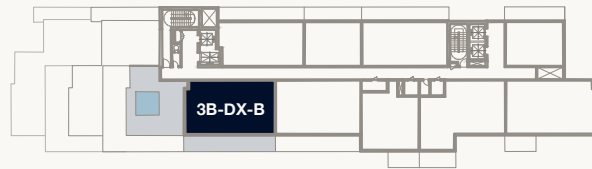
Kempinski Residences
The Creek

DUBAI

Tower 1



PARK
VIEW



3B-DX-B



WILDLIFE SANCTUARY
VIEW



CREEK HARBOUR
VIEW



BURJ KHALIFA
VIEW



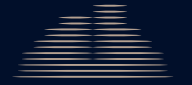
NORTH



1. All dimensions are in imperial and metric, and measured to the structural elements and exclude wall finishes and construction tolerances. 2. All materials, dimensions, and drawings are approximate only. 3. Information is subject to change without notice, at developer's absolute discretion. 4. Actual area may vary from the stated area. 5. Balcony sizes may vary between units. 6. Drawings are not to scale. 7. All images used are for illustrative purposes only and do not represent the actual size, features, specifications, fittings, or furnishings. 8. The developer reserves the right to make revisions/alterations, at its absolute discretion, without any liability whatsoever.

3 BEDROOM DUPLEX – TYPE B

Floor 11 – Upper Level



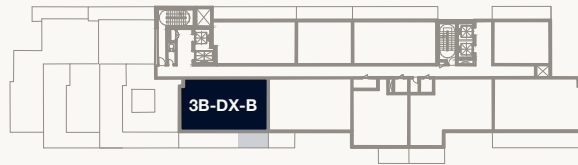
Kempinski Residences
The Creek

DUBAI

Tower 1



PARK
VIEW



3B-DX-B



WILDLIFE SANCTUARY
VIEW

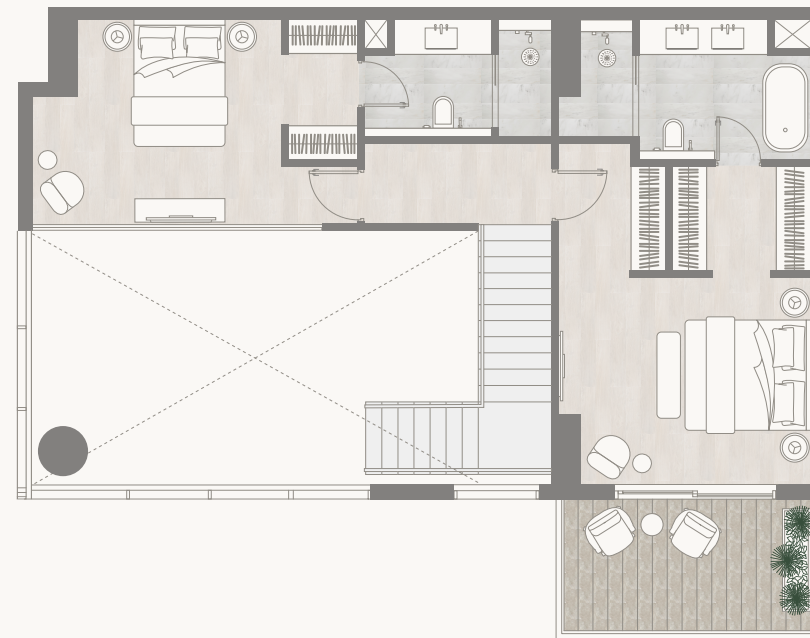


CREEK HARBOUR
VIEW



BURJ KHALIFA
VIEW

NORTH



1. All dimensions are in imperial and metric, and measured to the structural elements and exclude wall finishes and construction tolerances. 2. All materials, dimensions, and drawings are approximate only. 3. Information is subject to change without notice, at developer's absolute discretion. 4. Actual area may vary from the stated area. 5. Balcony sizes may vary between units. 6. Drawings are not to scale. 7. All images used are for illustrative purposes only and do not represent the actual size, features, specifications, fittings, or furnishings. 8. The developer reserves the right to make revisions/alterations, at its absolute discretion, without any liability whatsoever.

