

VISTA RIDGE

EMAAR SOUTH

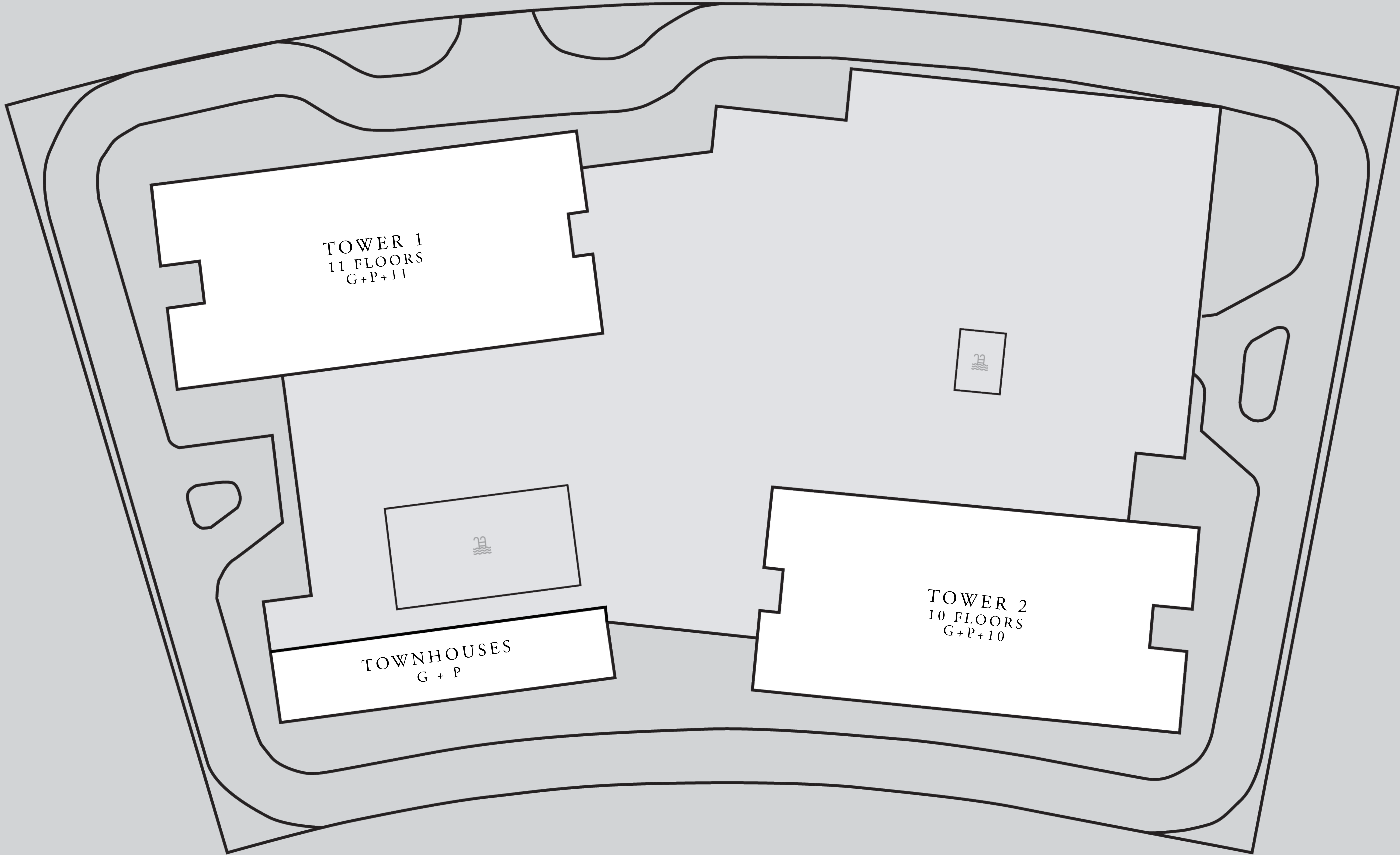
FLOOR PLANS

EMAAR

VISTA RIDGE

EMAAR SOUTH

MASSING PLAN



EMAAR

TOWER 1

FLOOR PLANS

VISTA RIDGE

EMAAR SOUTH

TOWER 1 1 BEDROOM TYPE 1

UNITS

P02, 102, 202, 302, 402, 502, 602, 702, 802, 902, 1002, 1102

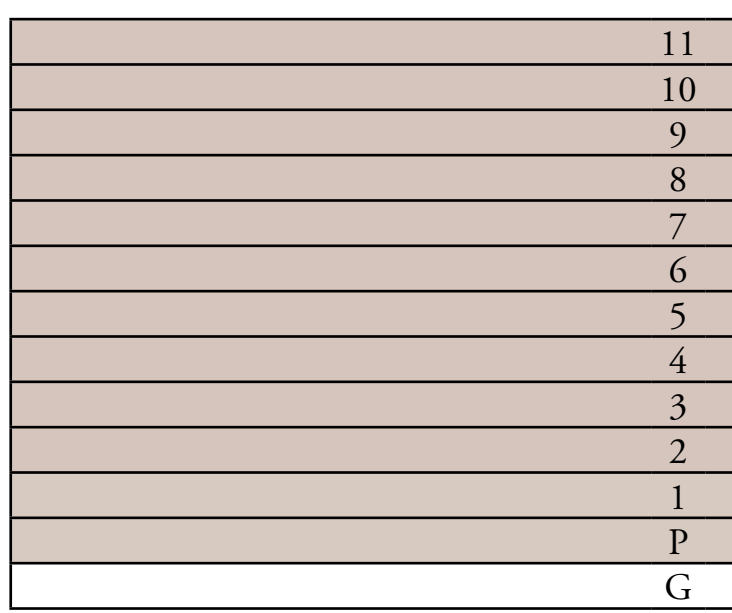
| | | |
|--------------|---------------|-------------|
| SUITE AREA | 722.8 SQ.FT. | 67.17 SQ.M. |
| BALCONY AREA | 70.4 SQ.FT. | 6.54 SQ.M. |
| TOTAL AREA | 793.19 SQ.FT. | 73.69 SQ.M. |

UNITS

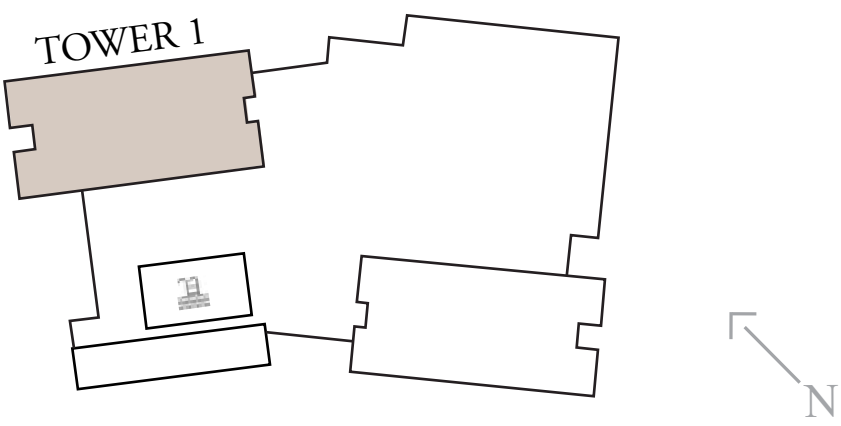
P04, 104, 204, 304, 404, 504, 604, 704, 804, 904, 1004, 1104

| | | |
|--------------|---------------|-------------|
| SUITE AREA | 717.09 SQ.FT. | 66.62 SQ.M. |
| BALCONY AREA | 70.83 SQ.FT. | 6.58 SQ.M. |
| TOTAL AREA | 787.92 SQ.FT. | 73.2 SQ.M. |

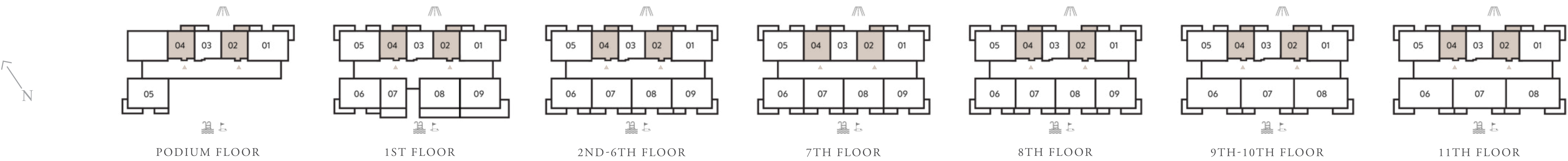
KEY SECTION



KEY LAYOUT



KEY PLANS



FLOOR PLAN 1. All dimensions are in imperial and metric, and measured from finish to finish excluding construction tolerances. 2. All materials, dimensions, and drawings are approximate only. 3. Information is subject to change without notice, at developer's absolute discretion. 4. Actual area may vary from the stated area. 5. Drawings not to scale. 6. All images used are for illustrative purposes only and do not represent the actual size, features, specifications, fittings, and furnishings. 7. The developer reserves the right to make revisions / alterations, at it's absolute discretion, without any liability whatsoever.

VISTA RIDGE

EMAAR SOUTH

TOWER 1 1 BEDROOM TYPE 2

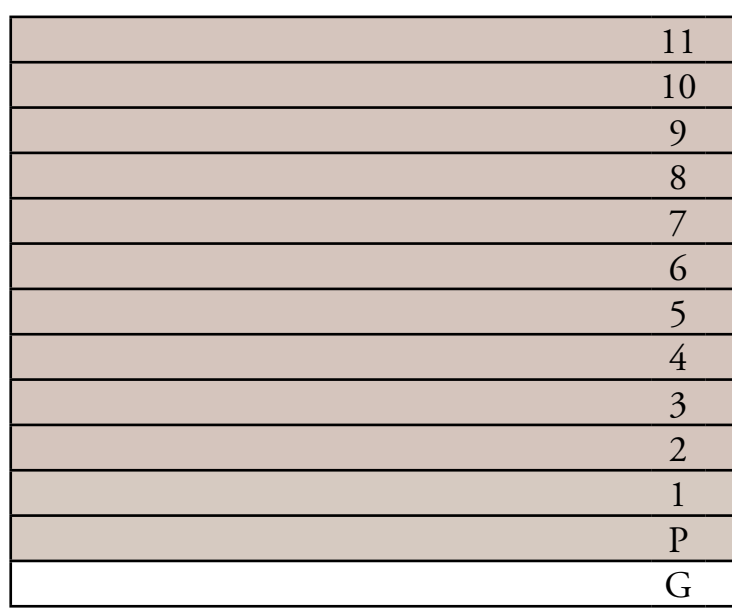
UNITS

P03, 103, 203, 303, 403, 503, 603, 703, 803, 903, 1003, 1103

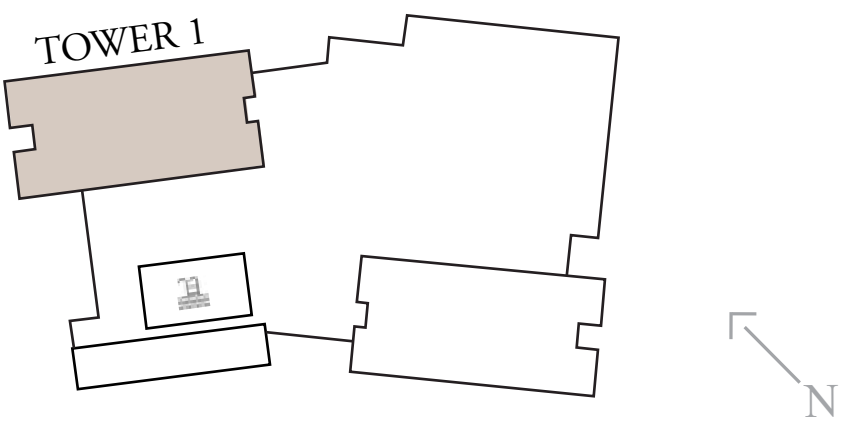
| | | |
|--------------|---------------|-------------|
| SUITE AREA | 754.98 SQ.FT. | 70.14 SQ.M. |
| BALCONY AREA | 70.5 SQ.FT. | 6.55 SQ.M. |
| TOTAL AREA | 825.48 SQ.FT. | 76.69 SQ.M. |



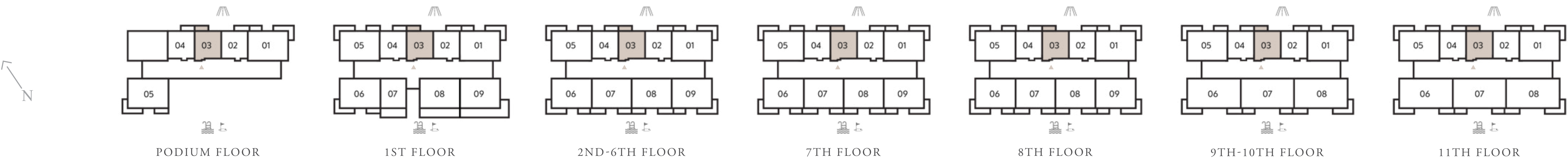
KEY SECTION



KEY LAYOUT



KEY PLANS



FLOOR PLAN 1. All dimensions are in imperial and metric, and measured from finish to finish excluding construction tolerances. 2. All materials, dimensions, and drawings are approximate only. 3. Information is subject to change without notice, at developer's absolute discretion. 4. Actual area may vary from the stated area. 5. Drawings not to scale. 6. All images used are for illustrative purposes only and do not represent the actual size, features, specifications, fittings, and furnishings. 7. The developer reserves the right to make revisions / alterations, at it's absolute discretion, without any liability whatsoever.

VISTA RIDGE

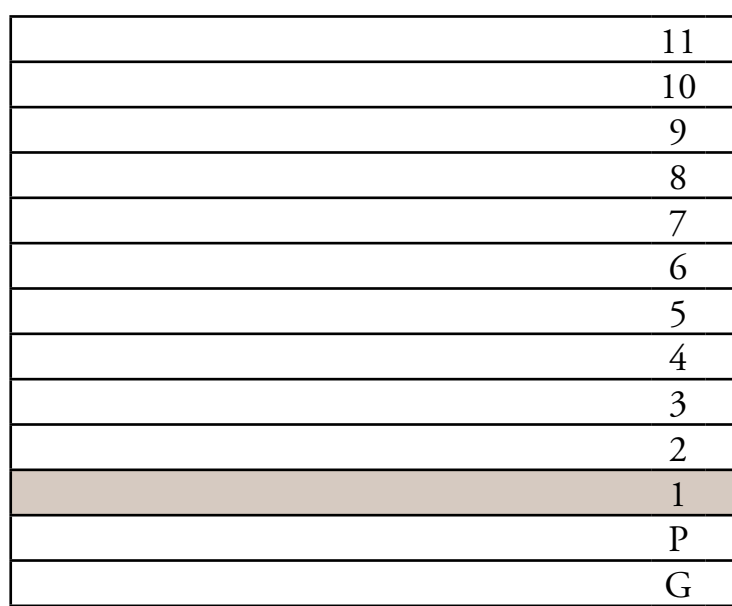
EMAAR SOUTH

TOWER 1 1 BEDROOM TYPE 3

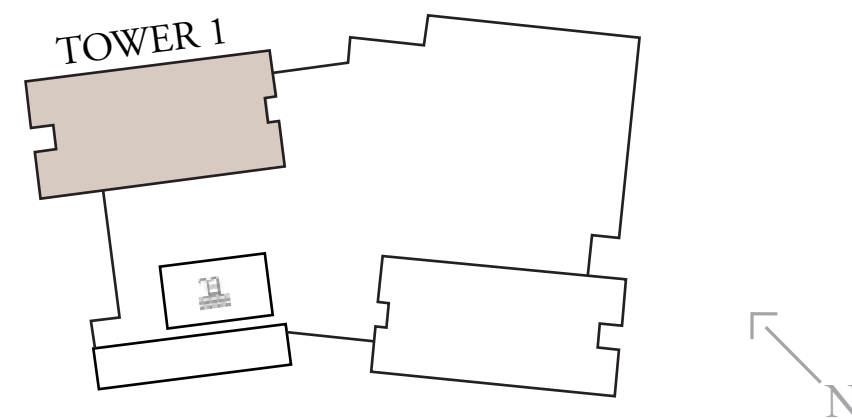
UNITS
107

| | | |
|--------------|----------------|-------------|
| SUITE AREA | 762.3 SQ.FT. | 70.82 SQ.M. |
| BALCONY AREA | 242.73 SQ.FT. | 22.55 SQ.M. |
| TOTAL AREA | 1005.03 SQ.FT. | 93.37 SQ.M. |

KEY SECTION



KEY LAYOUT



KEY PLANS



FLOOR PLAN 1. All dimensions are in imperial and metric, and measured from finish to finish excluding construction tolerances. 2. All materials, dimensions, and drawings are approximate only. 3. Information is subject to change without notice, at developer's absolute discretion. 4. Actual area may vary from the stated area. 5. Drawings not to scale. 6. All images used are for illustrative purposes only and do not represent the actual size, features, specifications, fittings, and furnishings. 7. The developer reserves the right to make revisions / alterations, at it's absolute discretion, without any liability whatsoever.

VISTA RIDGE

EMAAR SOUTH

TOWER 1 2 BEDROOM TYPE 3

UNITS

P05

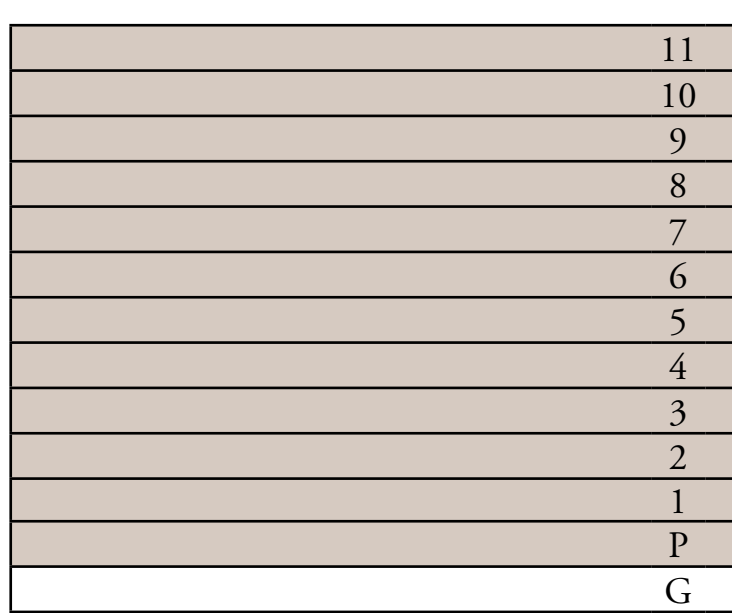
| | | |
|--------------|----------------|--------------|
| SUITE AREA | 1161.1 SQ.FT. | 107.87 SQ.M. |
| BALCONY AREA | 223.24 SQ.FT. | 20.74 SQ.M. |
| TOTAL AREA | 1384.35 SQ.FT. | 128.61 SQ.M. |

UNITS

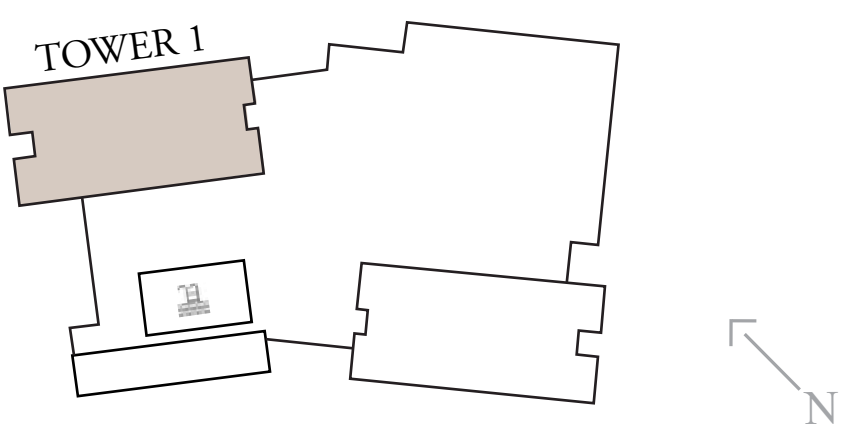
P01, 101, 201, 301, 401, 501, 601, 701, 801, 901, 1001, 1101

| | | |
|--------------|----------------|--------------|
| SUITE AREA | 1159.49 SQ.FT. | 107.72 SQ.M. |
| BALCONY AREA | 222.71 SQ.FT. | 20.69 SQ.M. |
| TOTAL AREA | 1382.19 SQ.FT. | 128.41 SQ.M. |

KEY SECTION



KEY LAYOUT



KEY PLANS



FLOOR PLAN 1. All dimensions are in imperial and metric, and measured from finish to finish excluding construction tolerances. 2. All materials, dimensions, and drawings are approximate only. 3. Information is subject to change without notice, at developer's absolute discretion. 4. Actual area may vary from the stated area. 5. Drawings not to scale. 6. All images used are for illustrative purposes only and do not represent the actual size, features, specifications, fittings, and furnishings. 7. The developer reserves the right to make revisions / alterations, at it's absolute discretion, without any liability whatsoever.

VISTA RIDGE

EMAAR SOUTH

TOWER 1 2 BEDROOM TYPE 3

UNITS

209, 309, 409,509, 609, 709

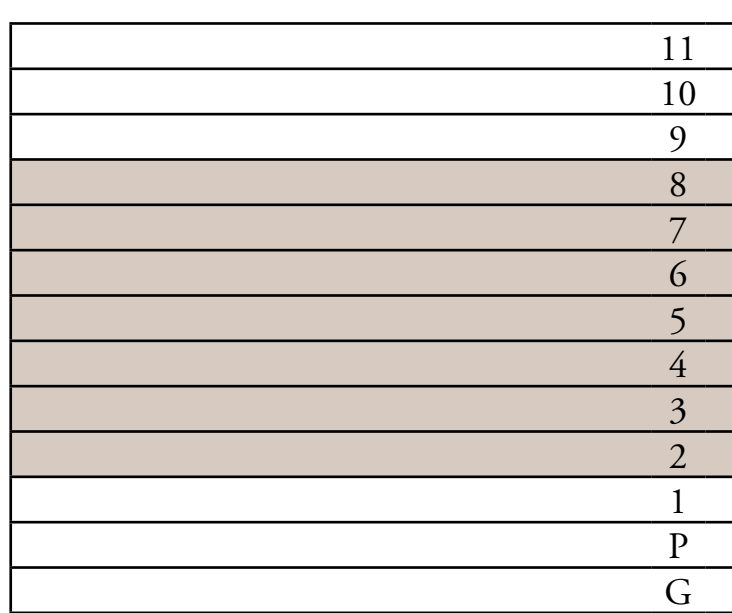
| | | |
|--------------|----------------|--------------|
| SUITE AREA | 1149.37 SQ.FT. | 106.78 SQ.M. |
| BALCONY AREA | 215.71 SQ.FT. | 20.04 SQ.M. |
| TOTAL AREA | 1365.08 SQ.FT. | 126.82 SQ.M. |

UNITS

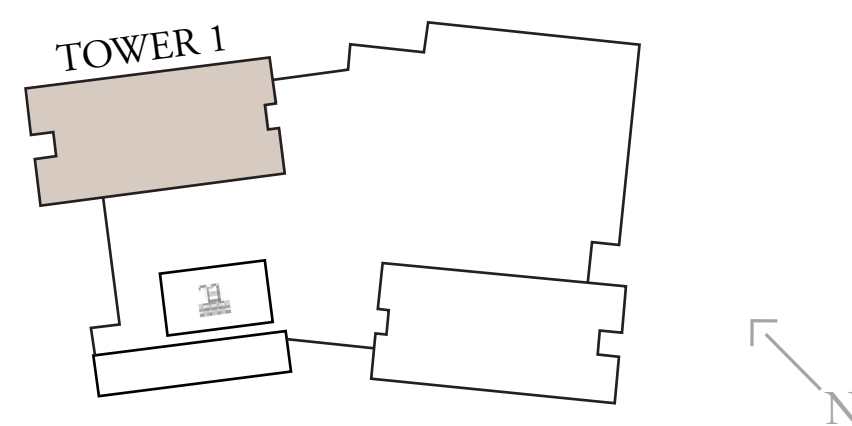
809

| | | |
|--------------|----------------|--------------|
| SUITE AREA | 1146.89 SQ.FT. | 106.55 SQ.M. |
| BALCONY AREA | 215.71 SQ.FT. | 20.04 SQ.M. |
| TOTAL AREA | 1362.6 SQ.FT. | 126.59 SQ.M. |

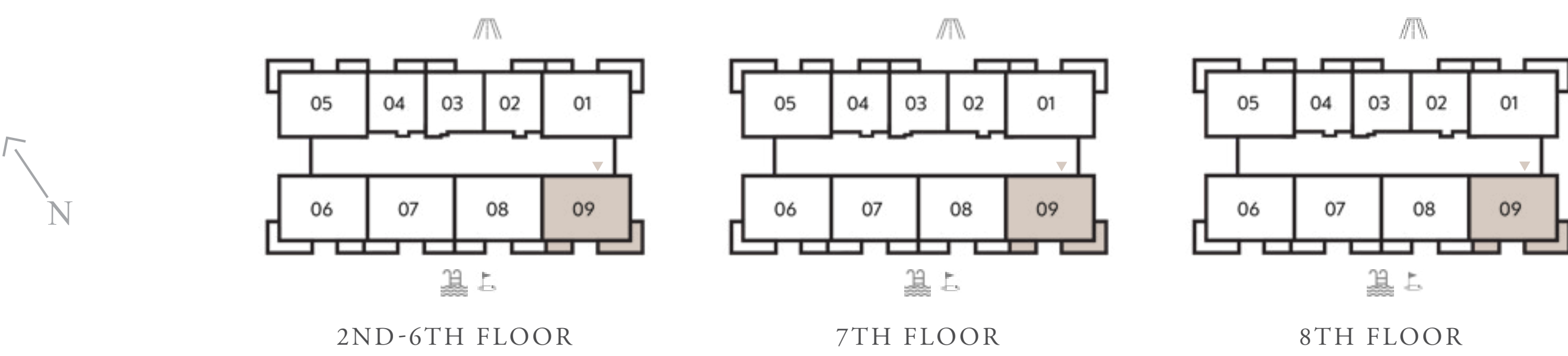
KEY SECTION



KEY LAYOUT



KEY PLANS



FLOOR PLAN 1. All dimensions are in imperial and metric, and measured from finish to finish excluding construction tolerances. 2. All materials, dimensions, and drawings are approximate only. 3. Information is subject to change without notice, at developer's absolute discretion. 4. Actual area may vary from the stated area. 5. Drawings not to scale. 6. All images used are for illustrative purposes only and do not represent the actual size, features, specifications, fittings, and furnishings. 7. The developer reserves the right to make revisions / alterations, at it's absolute discretion, without any liability whatsoever.

VISTA RIDGE

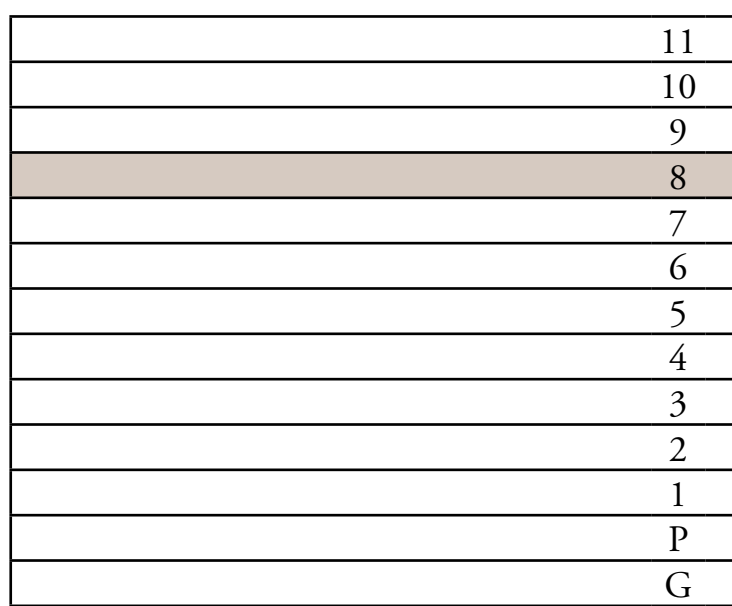
EMAAR SOUTH

TOWER 1 2 BEDROOM TYPE 3

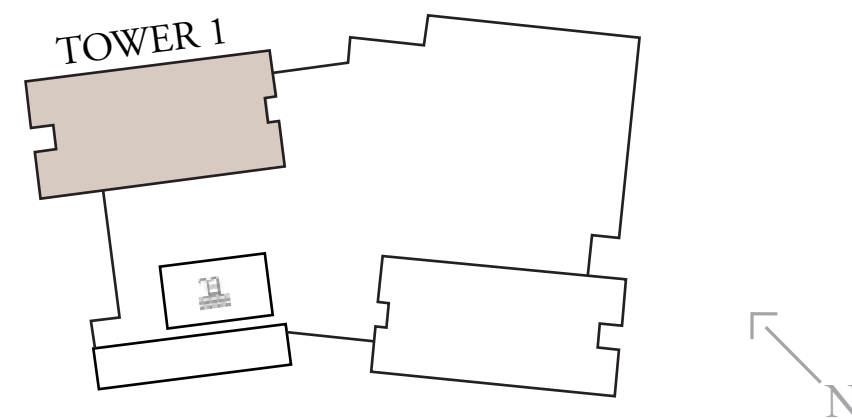
UNITS
806

| | | |
|--------------|----------------|--------------|
| SUITE AREA | 1154.21 SQ.FT. | 107.23 SQ.M. |
| BALCONY AREA | 222.38 SQ.FT. | 20.66 SQ.M. |
| TOTAL AREA | 1376.6 SQ.FT. | 127.89 SQ.M. |

KEY SECTION



KEY LAYOUT



KEY PLANS



FLOOR PLAN 1. All dimensions are in imperial and metric, and measured from finish to finish excluding construction tolerances. 2. All materials, dimensions, and drawings are approximate only. 3. Information is subject to change without notice, at developer's absolute discretion. 4. Actual area may vary from the stated area. 5. Drawings not to scale. 6. All images used are for illustrative purposes only and do not represent the actual size, features, specifications, fittings, and furnishings. 7. The developer reserves the right to make revisions / alterations, at it's absolute discretion, without any liability whatsoever.

VISTA RIDGE

EMAAR SOUTH

TOWER 1 2 BEDROOM TYPE 3A

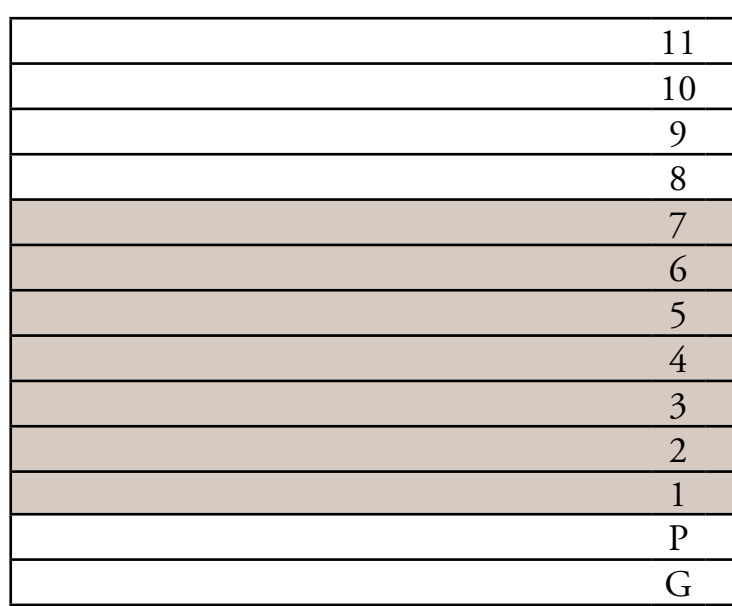
UNITS

106, 206, 306, 406, 506, 606, 706

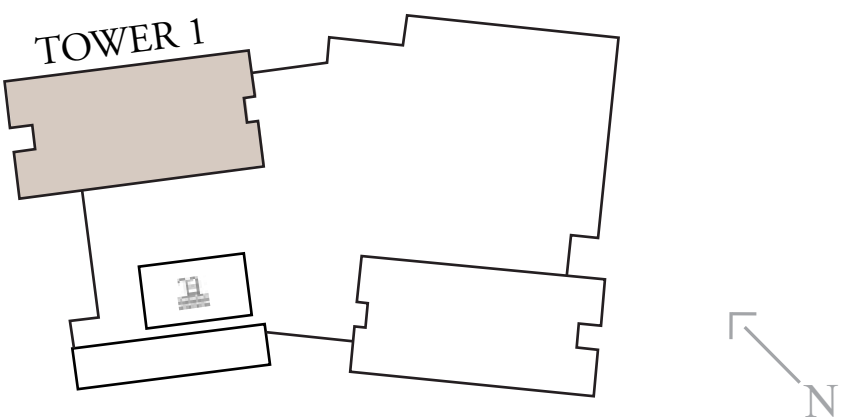
| | | |
|--------------|----------------|--------------|
| SUITE AREA | 1151.85 SQ.FT. | 107.01 SQ.M. |
| BALCONY AREA | 222.38 SQ.FT. | 20.66 SQ.M. |
| TOTAL AREA | 1374.23 SQ.FT. | 127.67 SQ.M. |



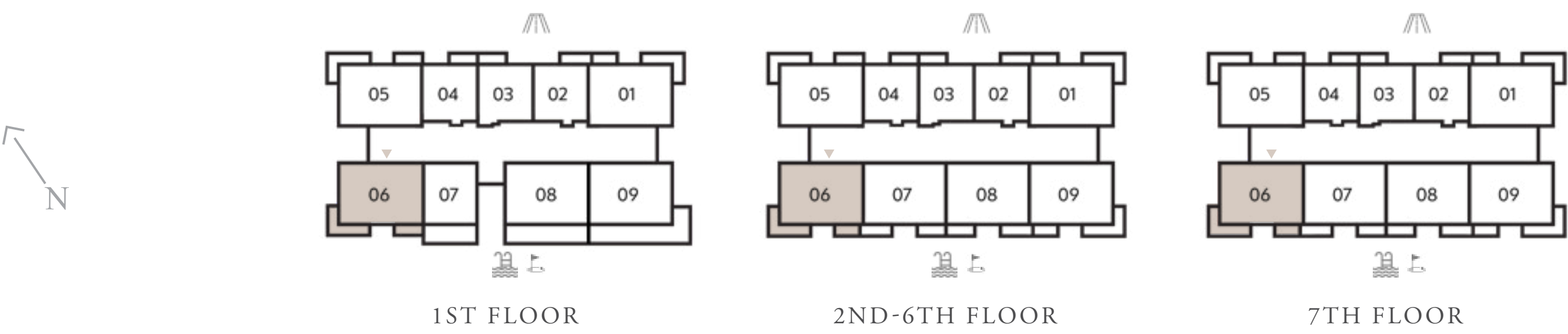
KEY SECTION



KEY LAYOUT



KEY PLANS



FLOOR PLAN 1. All dimensions are in imperial and metric, and measured from finish to finish excluding construction tolerances. 2. All materials, dimensions, and drawings are approximate only. 3. Information is subject to change without notice, at developer's absolute discretion. 4. Actual area may vary from the stated area. 5. Drawings not to scale. 6. All images used are for illustrative purposes only and do not represent the actual size, features, specifications, fittings, and furnishings. 7. The developer reserves the right to make revisions / alterations, at it's absolute discretion, without any liability whatsoever.

VISTA RIDGE

EMAAR SOUTH

TOWER 1 2 BEDROOM TYPE 3A

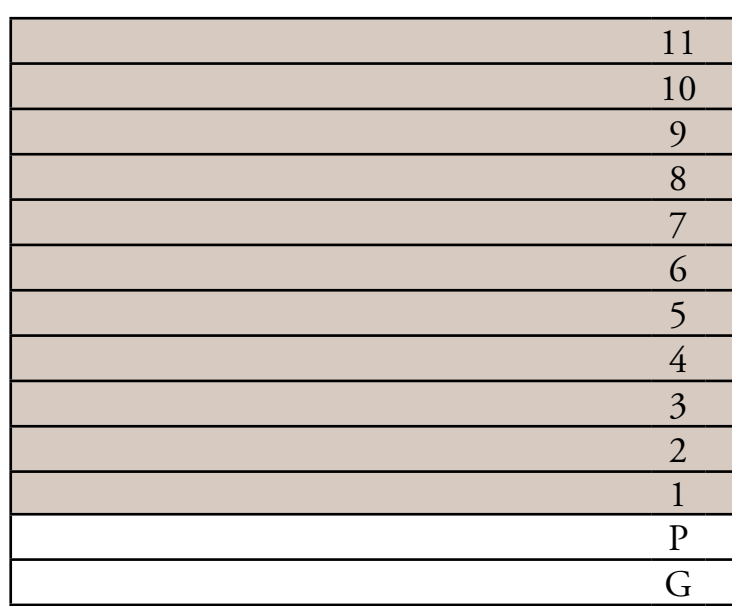
UNITS

105, 205, 305, 405, 505, 605, 705, 805, 905, 1005, 1105

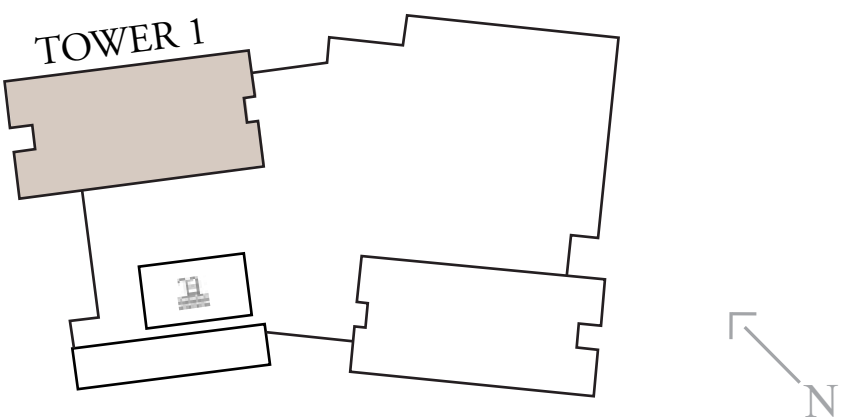
| | | |
|--------------|----------------|--------------|
| SUITE AREA | 1161.1 SQ.FT. | 107.87 SQ.M. |
| BALCONY AREA | 221.84 1SQ.FT. | 20.61 SQ.M. |
| TOTAL AREA | 1382.95 SQ.FT. | 128.48 SQ.M. |



KEY SECTION



KEY LAYOUT



KEY PLANS



FLOOR PLAN 1. All dimensions are in imperial and metric, and measured from finish to finish excluding construction tolerances. 2. All materials, dimensions, and drawings are approximate only. 3. Information is subject to change without notice, at developer's absolute discretion. 4. Actual area may vary from the stated area. 5. Drawings not to scale. 6. All images used are for illustrative purposes only and do not represent the actual size, features, specifications, fittings, and furnishings. 7. The developer reserves the right to make revisions / alterations, at it's absolute discretion, without any liability whatsoever.

VISTA RIDGE

EMAAR SOUTH

TOWER 1 2 BEDROOM TYPE 4

UNITS

207, 307, 407, 507, 607, 707

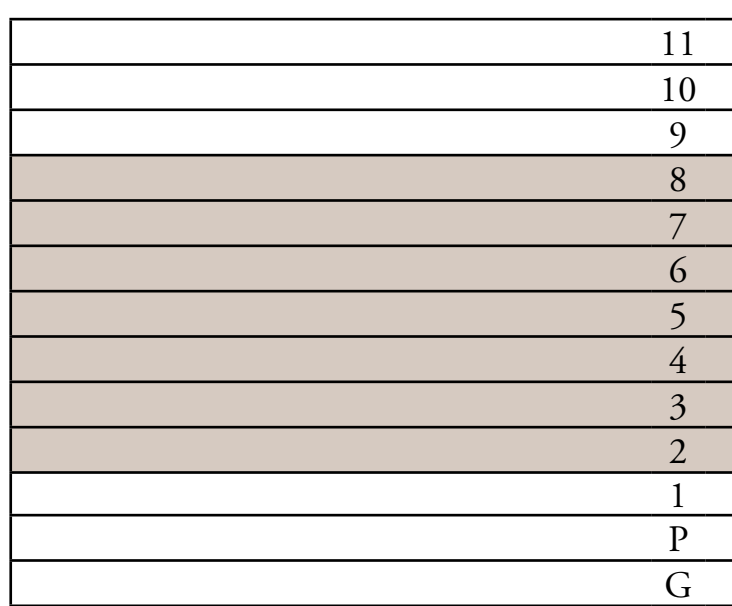
| | | |
|--------------|----------------|--------------|
| SUITE AREA | 1143.45 SQ.FT. | 106.23 SQ.M. |
| BALCONY AREA | 142.41 SQ.FT. | 13.23 SQ.M. |
| TOTAL AREA | 1285.86 SQ.FT. | 119.46 SQ.M. |

UNITS

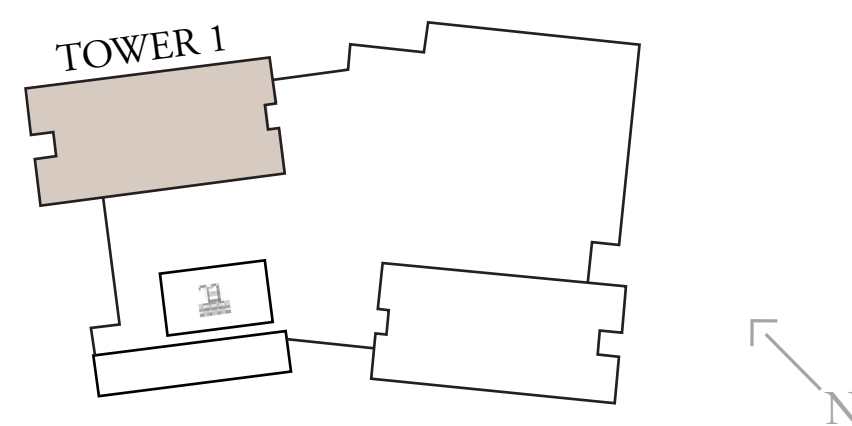
807

| | | |
|--------------|----------------|--------------|
| SUITE AREA | 1136.13 SQ.FT. | 105.55 SQ.M. |
| BALCONY AREA | 142.41 SQ.FT. | 13.23 SQ.M. |
| TOTAL AREA | 1278.54 SQ.FT. | 118.78 SQ.M. |

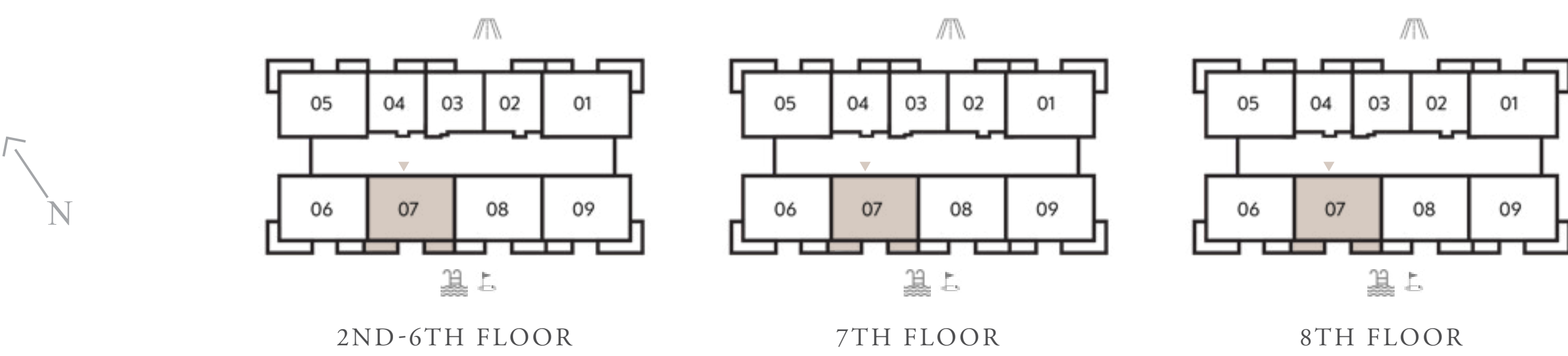
KEY SECTION



KEY LAYOUT



KEY PLANS



FLOOR PLAN 1. All dimensions are in imperial and metric, and measured from finish to finish excluding construction tolerances. 2. All materials, dimensions, and drawings are approximate only. 3. Information is subject to change without notice, at developer's absolute discretion. 4. Actual area may vary from the stated area. 5. Drawings not to scale. 6. All images used are for illustrative purposes only and do not represent the actual size, features, specifications, fittings, and furnishings. 7. The developer reserves the right to make revisions / alterations, at it's absolute discretion, without any liability whatsoever.

VISTA RIDGE

EMAAR SOUTH

TOWER 1 2 BEDROOM TYPE 4A

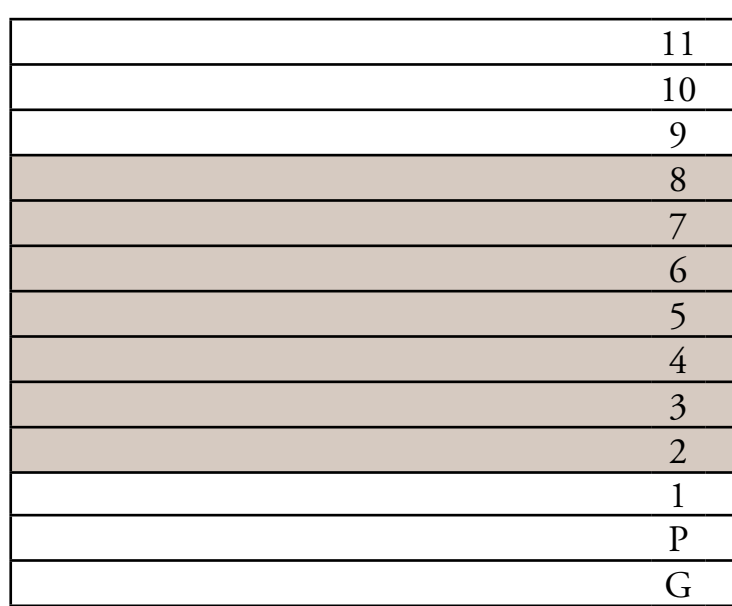
UNITS
208, 308, 408, 508, 608, 708

| | | |
|--------------|----------------|--------------|
| SUITE AREA | 1143.34 SQ.FT. | 106.22 SQ.M. |
| BALCONY AREA | 149.19 SQ.FT. | 13.86 SQ.M. |
| TOTAL AREA | 1292.53 SQ.FT. | 120.08 SQ.M. |

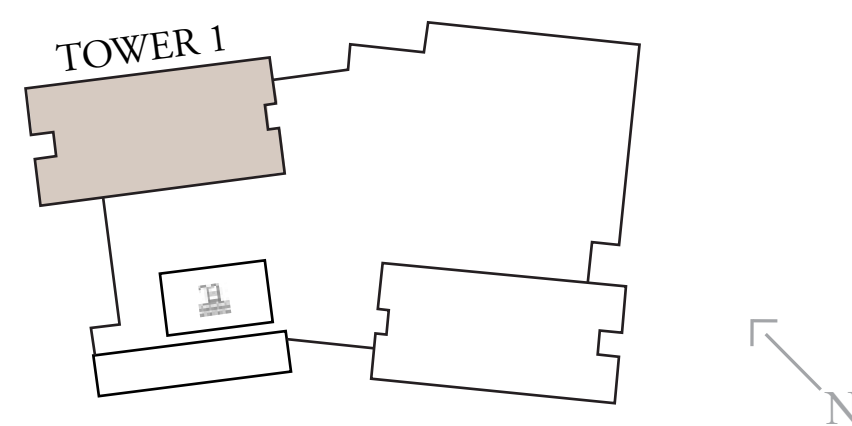
UNITS
808

| | | |
|--------------|----------------|--------------|
| SUITE AREA | 1131.5 SQ.FT. | 105.12 SQ.M. |
| BALCONY AREA | 149.08 SQ.FT. | 13.85 SQ.M. |
| TOTAL AREA | 1280.58 SQ.FT. | 118.97 SQ.M. |

KEY SECTION



KEY LAYOUT



KEY PLANS



FLOOR PLAN 1. All dimensions are in imperial and metric, and measured from finish to finish excluding construction tolerances. 2. All materials, dimensions, and drawings are approximate only. 3. Information is subject to change without notice, at developer's absolute discretion. 4. Actual area may vary from the stated area. 5. Drawings not to scale. 6. All images used are for illustrative purposes only and do not represent the actual size, features, specifications, fittings, and furnishings. 7. The developer reserves the right to make revisions / alterations, at it's absolute discretion, without any liability whatsoever.

VISTA RIDGE

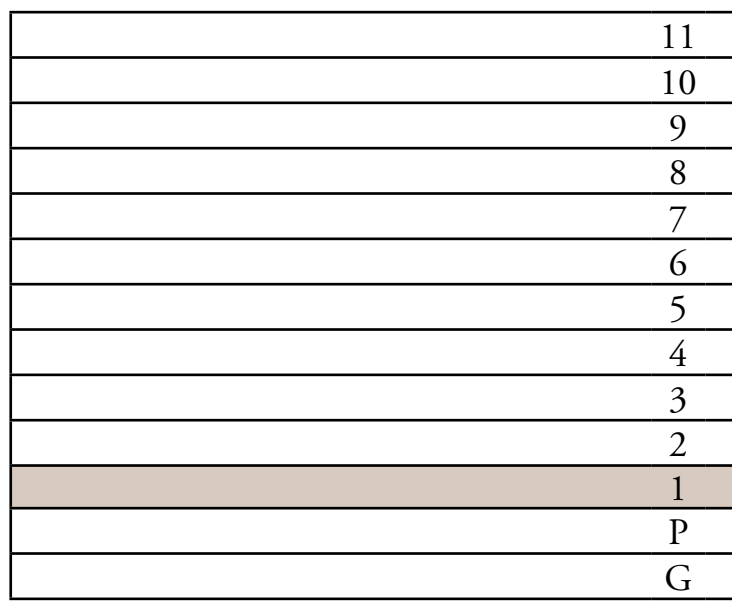
EMAAR SOUTH

TOWER 1 2 BEDROOM TYPE 5

UNITS
108

| | | |
|--------------|----------------|--------------|
| SUITE AREA | 1144.53 SQ.FT. | 106.33 SQ.M. |
| BALCONY AREA | 366.83 SQ.FT. | 34.08 SQ.M. |
| TOTAL AREA | 1511.36 SQ.FT. | 140.41 SQ.M. |

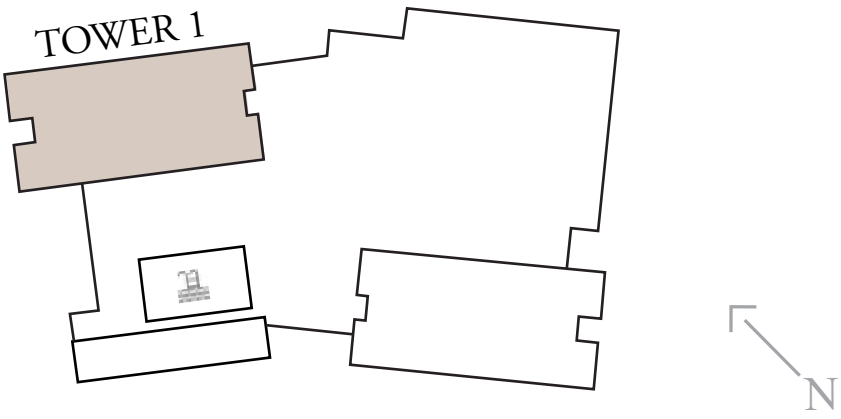
KEY SECTION



KEY PLANS



KEY LAYOUT



FLOOR PLAN 1. All dimensions are in imperial and metric, and measured from finish to finish excluding construction tolerances. 2. All materials, dimensions, and drawings are approximate only. 3. Information is subject to change without notice, at developer's absolute discretion. 4. Actual area may vary from the stated area. 5. Drawings not to scale. 6. All images used are for illustrative purposes only and do not represent the actual size, features, specifications, fittings, and furnishings. 7. The developer reserves the right to make revisions / alterations, at it's absolute discretion, without any liability whatsoever.

VISTA RIDGE

EMAAR SOUTH

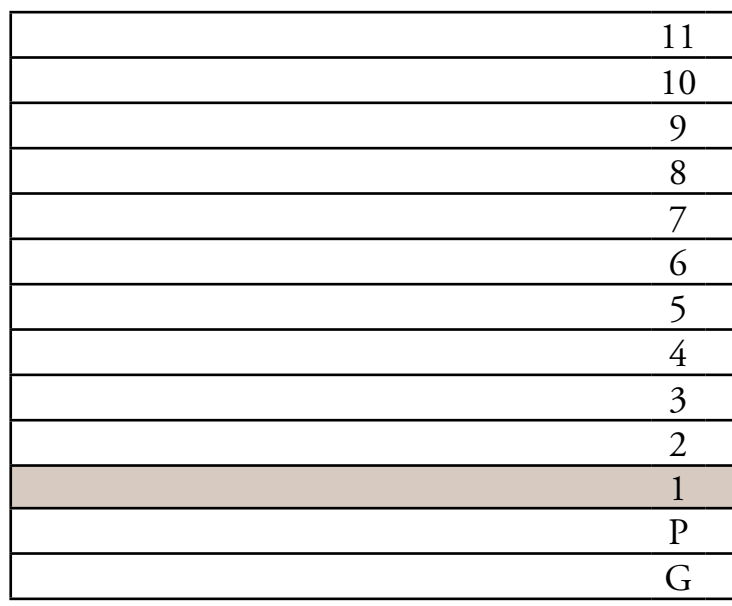
TOWER 1 2 BEDROOM TYPE 6

UNITS
109

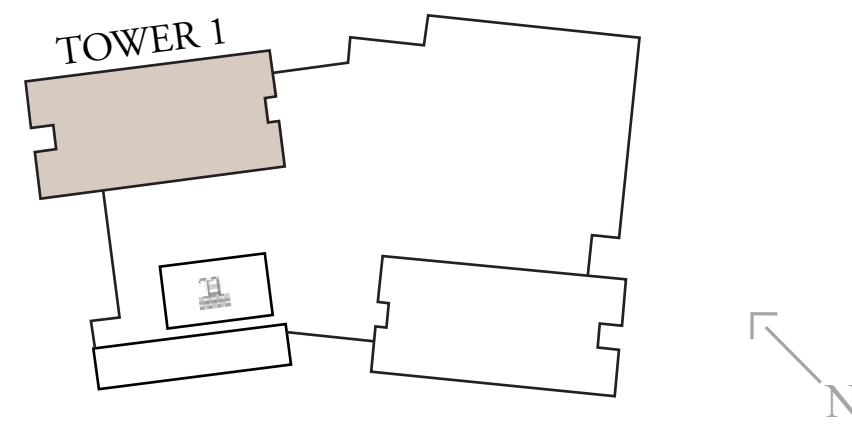
| | | |
|--------------|----------------|--------------|
| SUITE AREA | 1149.37 SQ.FT. | 106.78 SQ.M. |
| BALCONY AREA | 527.11 SQ.FT. | 48.97 SQ.M. |
| TOTAL AREA | 1676.48 SQ.FT. | 155.75 SQ.M. |



KEY SECTION



KEY LAYOUT



KEY PLANS



FLOOR PLAN 1. All dimensions are in imperial and metric, and measured from finish to finish excluding construction tolerances. 2. All materials, dimensions, and drawings are approximate only. 3. Information is subject to change without notice, at developer's absolute discretion. 4. Actual area may vary from the stated area. 5. Drawings not to scale. 6. All images used are for illustrative purposes only and do not represent the actual size, features, specifications, fittings, and furnishings. 7. The developer reserves the right to make revisions / alterations, at it's absolute discretion, without any liability whatsoever.

VISTA RIDGE

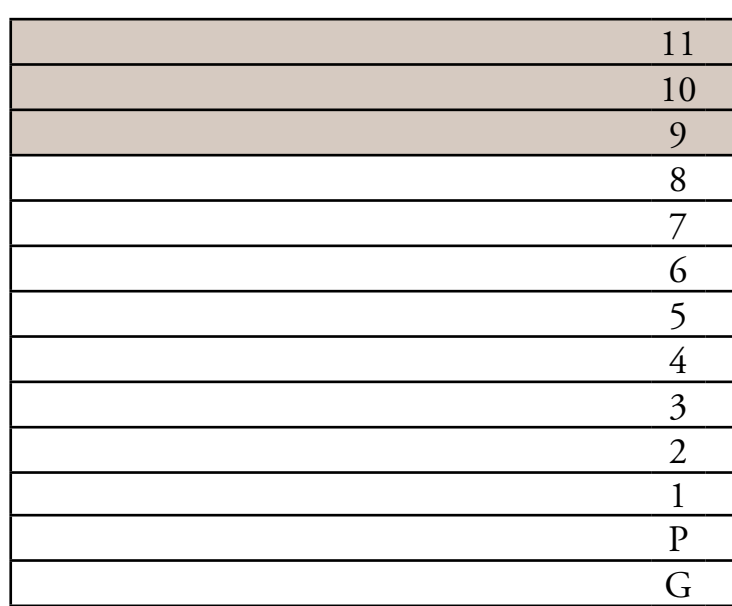
EMAAR SOUTH

TOWER 1 3 BEDROOM TYPE 1

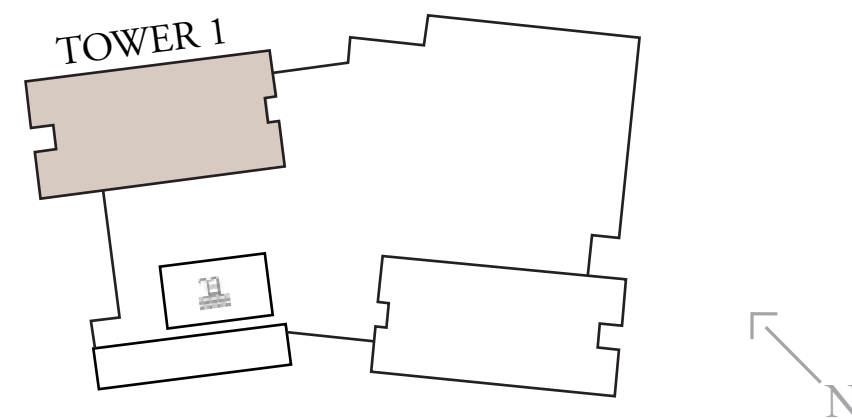
UNITS
906, 1006, 1106

| | | |
|--------------|----------------|--------------|
| SUITE AREA | 1523.95 SQ.FT. | 141.58 SQ.M. |
| BALCONY AREA | 224.54 SQ.FT. | 20.86 SQ.M. |
| TOTAL AREA | 1748.49 SQ.FT. | 162.44 SQ.M. |

KEY SECTION



KEY LAYOUT



KEY PLANS



FLOOR PLAN 1. All dimensions are in imperial and metric, and measured from finish to finish excluding construction tolerances. 2. All materials, dimensions, and drawings are approximate only. 3. Information is subject to change without notice, at developer's absolute discretion. 4. Actual area may vary from the stated area. 5. Drawings not to scale. 6. All images used are for illustrative purposes only and do not represent the actual size, features, specifications, fittings, and furnishings. 7. The developer reserves the right to make revisions / alterations, at it's absolute discretion, without any liability whatsoever.

VISTA RIDGE

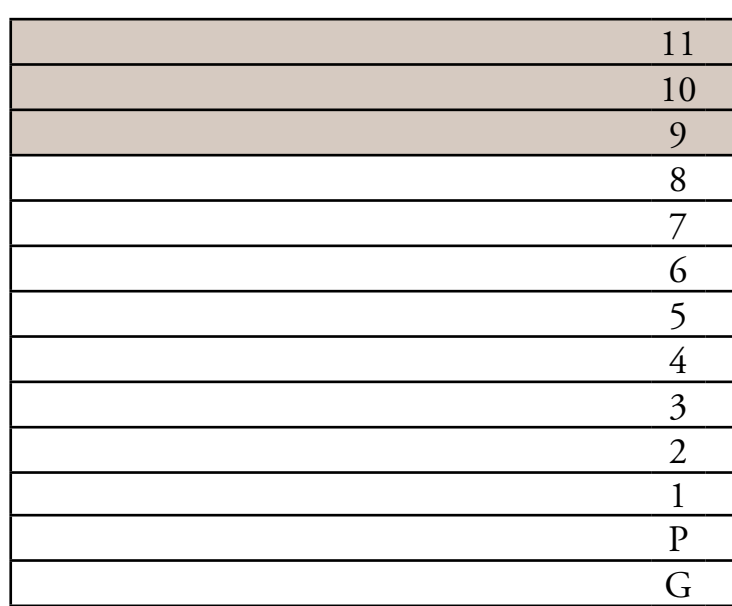
EMAAR SOUTH

TOWER 1 3 BEDROOM TYPE 1A

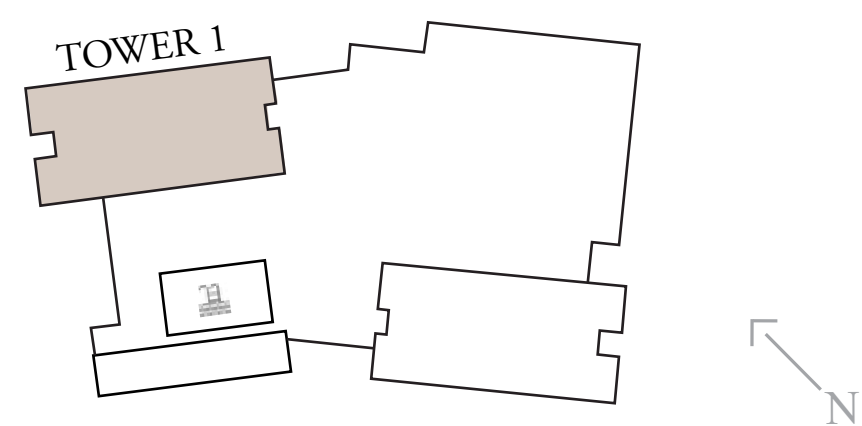
UNITS
908, 1008, 1108

| | | |
|--------------|----------------|--------------|
| SUITE AREA | 1521.48 SQ.FT. | 141.35 SQ.M. |
| BALCONY AREA | 230.46 SQ.FT. | 21.41 SQ.M. |
| TOTAL AREA | 1751.93 SQ.FT. | 162.76 SQ.M. |

KEY SECTION



KEY LAYOUT



KEY PLANS



FLOOR PLAN 1. All dimensions are in imperial and metric, and measured from finish to finish excluding construction tolerances. 2. All materials, dimensions, and drawings are approximate only. 3. Information is subject to change without notice, at developer's absolute discretion. 4. Actual area may vary from the stated area. 5. Drawings not to scale. 6. All images used are for illustrative purposes only and do not represent the actual size, features, specifications, fittings, and furnishings. 7. The developer reserves the right to make revisions / alterations, at it's absolute discretion, without any liability whatsoever.

VISTA RIDGE

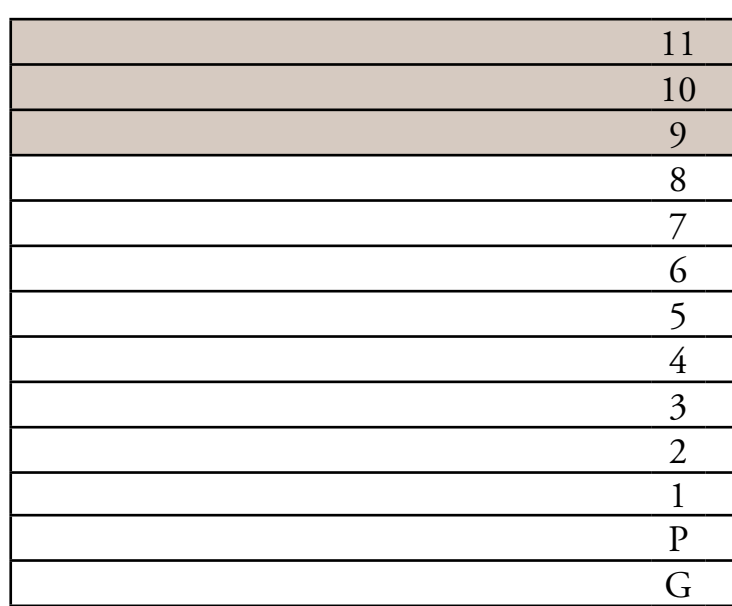
EMAAR SOUTH

TOWER 1 3 BEDROOM TYPE 2

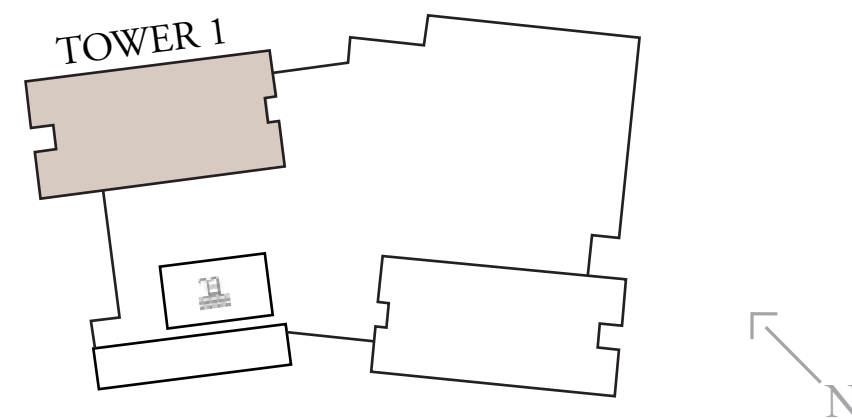
UNITS
907, 1007, 1107

| | | |
|--------------|----------------|--------------|
| SUITE AREA | 1520.83 SQ.FT. | 141.29 SQ.M. |
| BALCONY AREA | 134.55 SQ.FT. | 12.5 SQ.M. |
| TOTAL AREA | 1655.38 SQ.FT. | 153.79 SQ.M. |

KEY SECTION



KEY LAYOUT



KEY PLANS



FLOOR PLAN 1. All dimensions are in imperial and metric, and measured from finish to finish excluding construction tolerances. 2. All materials, dimensions, and drawings are approximate only. 3. Information is subject to change without notice, at developer's absolute discretion. 4. Actual area may vary from the stated area. 5. Drawings not to scale. 6. All images used are for illustrative purposes only and do not represent the actual size, features, specifications, fittings, and furnishings. 7. The developer reserves the right to make revisions / alterations, at it's absolute discretion, without any liability whatsoever.

TOWER 2

FLOOR PLANS

VISTA RIDGE

EMAAR SOUTH

TOWER 2 1 BEDROOM TYPE 1A

UNITS

204, 304, 404, 504, 604, 704, 804, 904, 1004

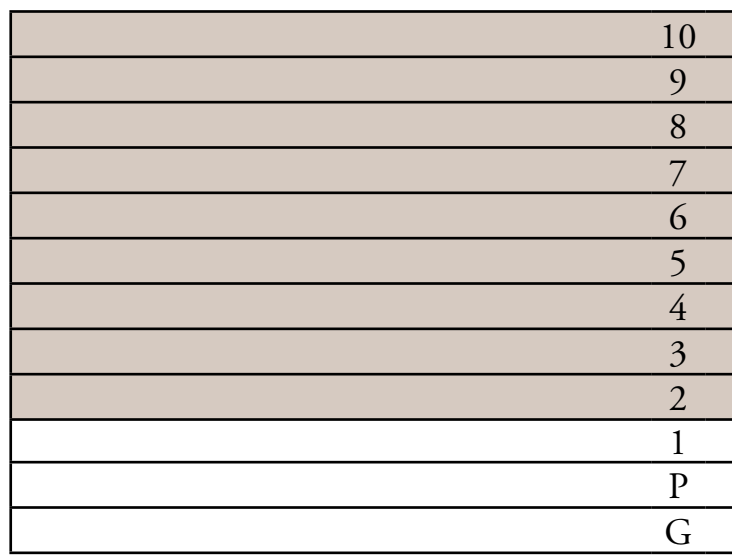
| | | |
|--------------|---------------|-------------|
| SUITE AREA | 717.09 SQ.FT. | 66.62 SQ.M. |
| BALCONY AREA | 70.72 SQ.FT. | 6.57 SQ.M. |
| TOTAL AREA | 787.81 SQ.FT. | 73.19 SQ.M. |

UNITS

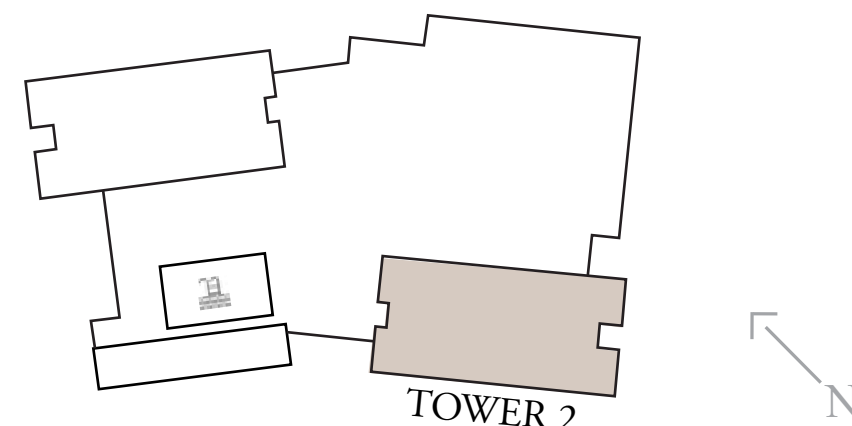
202, 302, 402, 502, 602, 702, 802, 902, 1002

| | | |
|--------------|---------------|-------------|
| SUITE AREA | 723.23 SQ.FT. | 67.19 SQ.M. |
| BALCONY AREA | 70.4 SQ.FT. | 6.54 SQ.M. |
| TOTAL AREA | 793.62 SQ.FT. | 73.73 SQ.M. |

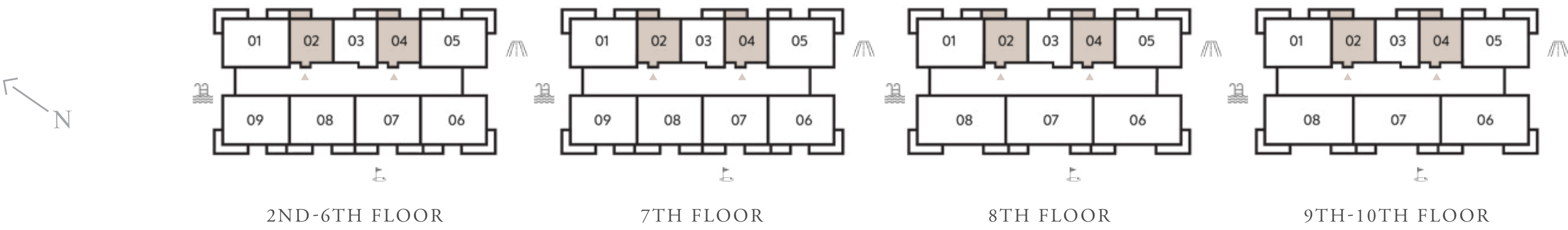
KEY SECTION



KEY LAYOUT



KEY PLANS



FLOOR PLAN 1. All dimensions are in imperial and metric, and measured from finish to finish excluding construction tolerances. 2. All materials, dimensions, and drawings are approximate only. 3. Information is subject to change without notice, at developer's absolute discretion. 4. Actual area may vary from the stated area. 5. Drawings not to scale. 6. All images used are for illustrative purposes only and do not represent the actual size, features, specifications, fittings, and furnishings. 7. The developer reserves the right to make revisions / alterations, at it's absolute discretion, without any liability whatsoever.

VISTA RIDGE

EMAAR SOUTH

TOWER 2 1 BEDROOM TYPE 2A

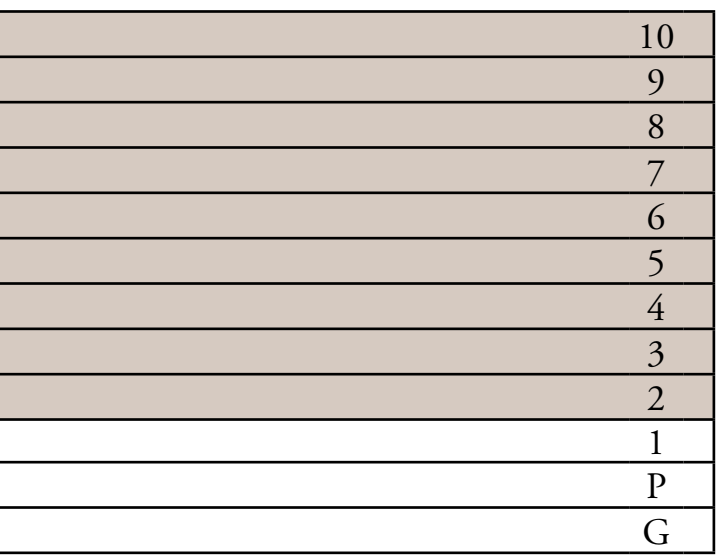
UNITS

203, 303, 403, 503, 603, 703, 803, 903, 1003

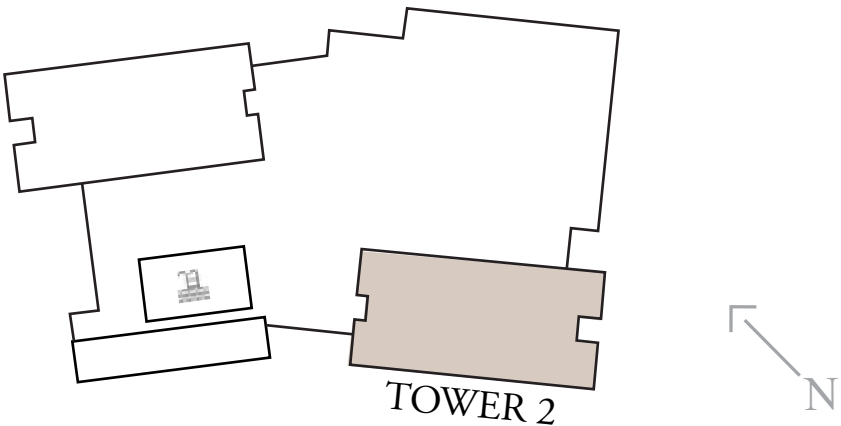
| | | |
|--------------|---------------|-------------|
| SUITE AREA | 754.98 SQ.FT. | 70.14 SQ.M. |
| BALCONY AREA | 70.5 SQ.FT. | 6.55 SQ.M. |
| TOTAL AREA | 825.48 SQ.FT. | 76.69 SQ.M. |



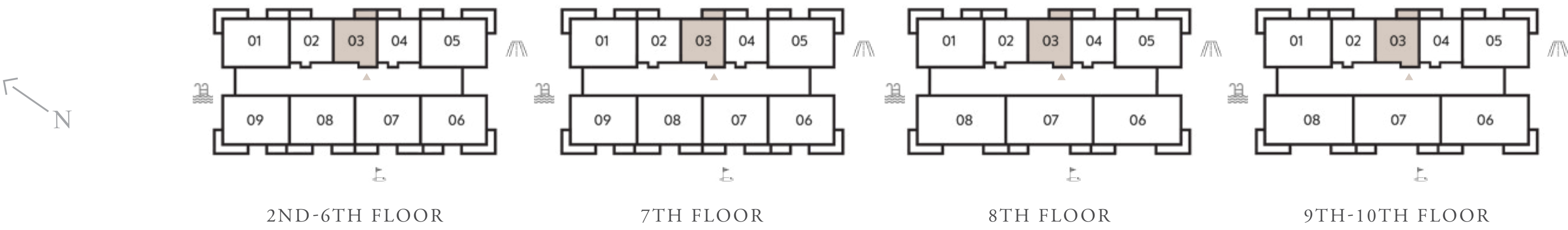
KEY SECTION



KEY LAYOUT



KEY PLANS



FLOOR PLAN 1. All dimensions are in imperial and metric, and measured from finish to finish excluding construction tolerances. 2. All materials, dimensions, and drawings are approximate only. 3. Information is subject to change without notice, at developer's absolute discretion. 4. Actual area may vary from the stated area. 5. Drawings not to scale. 6. All images used are for illustrative purposes only and do not represent the actual size, features, specifications, fittings, and furnishings. 7. The developer reserves the right to make revisions / alterations, at it's absolute discretion, without any liability whatsoever.

VISTA RIDGE

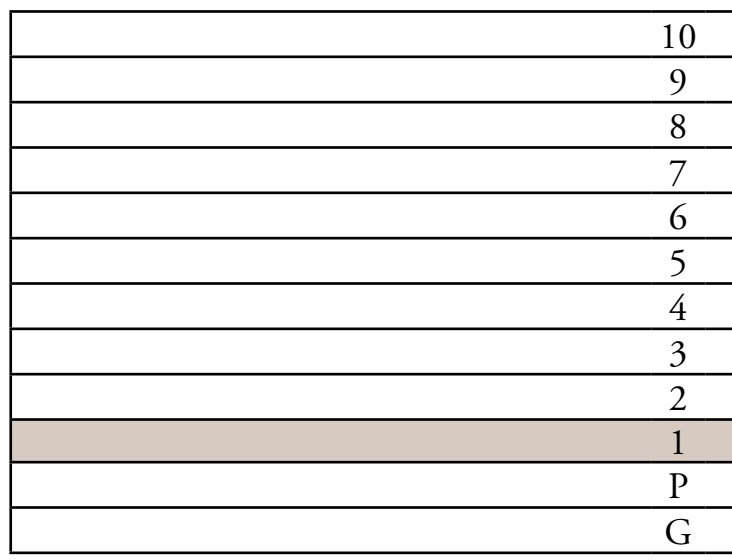
EMAAR SOUTH

TOWER 2 1 BEDROOM TYPE 3A

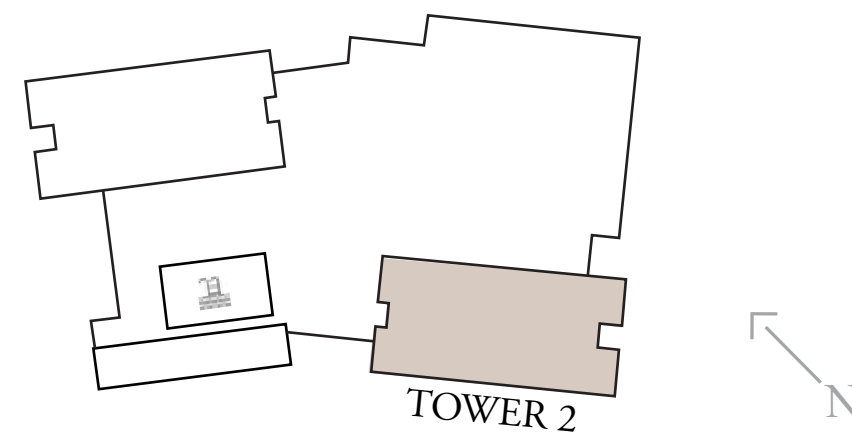
UNITS
103

| | | |
|--------------|---------------|-------------|
| SUITE AREA | 717.09 SQ.FT. | 66.62 SQ.M. |
| BALCONY AREA | 243.59 SQ.FT. | 22.63 SQ.M. |
| TOTAL AREA | 960.68 SQ.FT. | 89.25 SQ.M. |

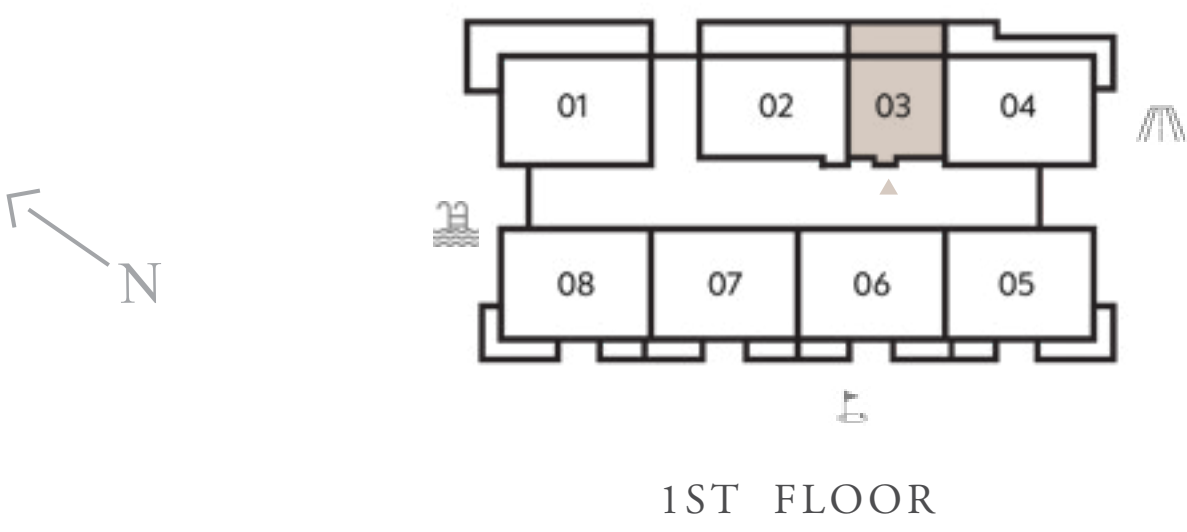
KEY SECTION



KEY LAYOUT



KEY PLANS



FLOOR PLAN 1. All dimensions are in imperial and metric, and measured from finish to finish excluding construction tolerances. 2. All materials, dimensions, and drawings are approximate only. 3. Information is subject to change without notice, at developer's absolute discretion. 4. Actual area may vary from the stated area. 5. Drawings not to scale. 6. All images used are for illustrative purposes only and do not represent the actual size, features, specifications, fittings, and furnishings. 7. The developer reserves the right to make revisions / alterations, at it's absolute discretion, without any liability whatsoever.

VISTA RIDGE

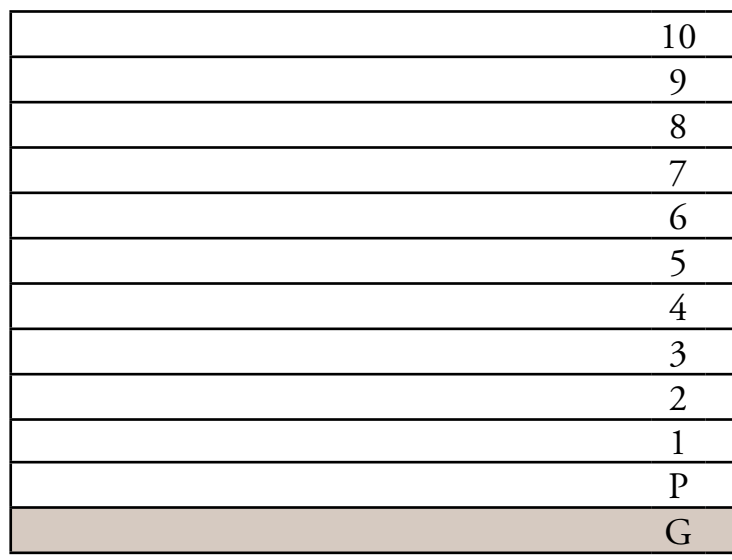
EMAAR SOUTH

TOWER 2 2 BEDROOM TYPE 1

UNITS
G 01

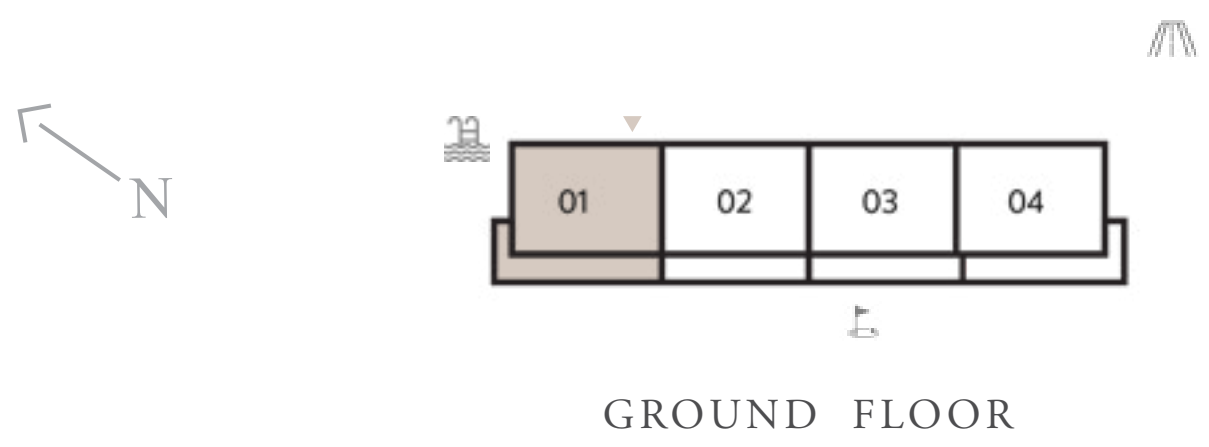
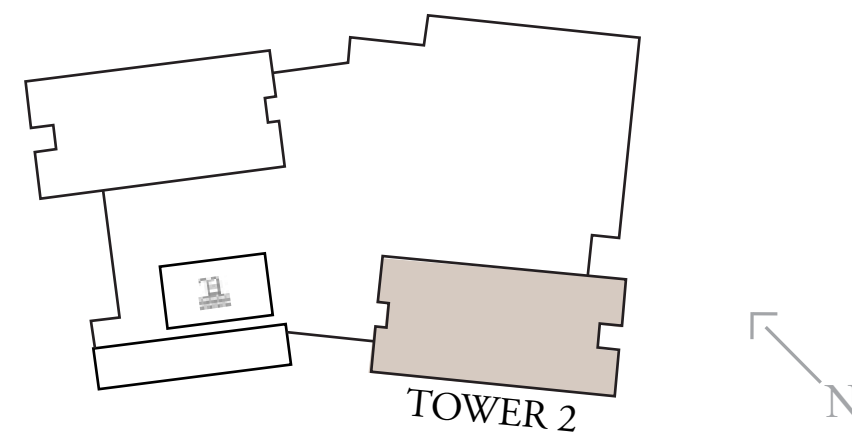
| | | |
|--------------|----------------|--------------|
| SUITE AREA | 1149.69 SQ.FT. | 106.81 SQ.M. |
| BALCONY AREA | 385.24 SQ.FT. | 35.79 SQ.M. |
| TOTAL AREA | 1534.93 SQ.FT. | 142.6 SQ.M. |

KEY SECTION



KEY PLANS

KEY LAYOUT



FLOOR PLAN 1. All dimensions are in imperial and metric, and measured from finish to finish excluding construction tolerances. 2. All materials, dimensions, and drawings are approximate only. 3. Information is subject to change without notice, at developer's absolute discretion. 4. Actual area may vary from the stated area. 5. Drawings not to scale. 6. All images used are for illustrative purposes only and do not represent the actual size, features, specifications, fittings, and furnishings. 7. The developer reserves the right to make revisions / alterations, at it's absolute discretion, without any liability whatsoever.

VISTA RIDGE

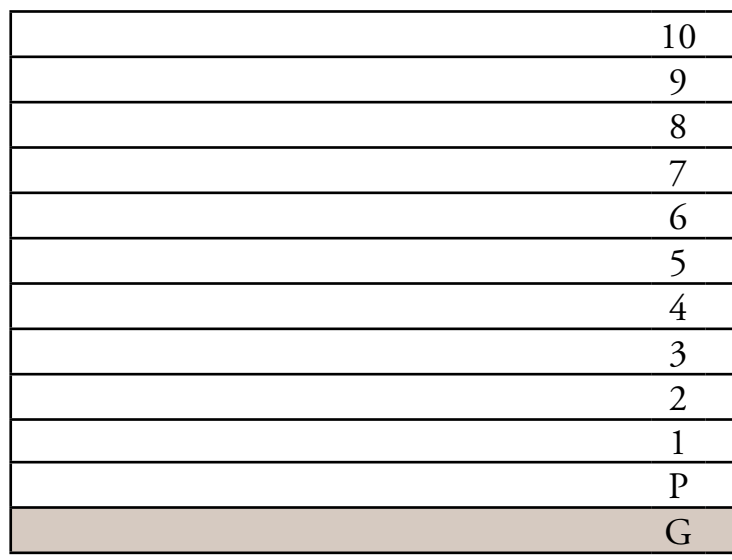
EMAAR SOUTH

TOWER 2 2 BEDROOM TYPE 1A

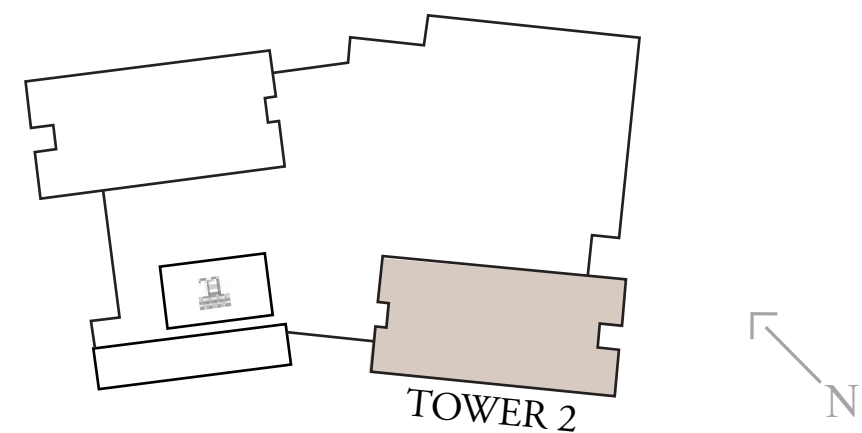
UNITS
G 04

| | | |
|--------------|----------------|--------------|
| SUITE AREA | 1152.06 SQ.FT. | 107.03 SQ.M. |
| BALCONY AREA | 385.35 SQ.FT. | 35.8 SQ.M. |
| TOTAL AREA | 1537.41 SQ.FT. | 142.83 SQ.M. |

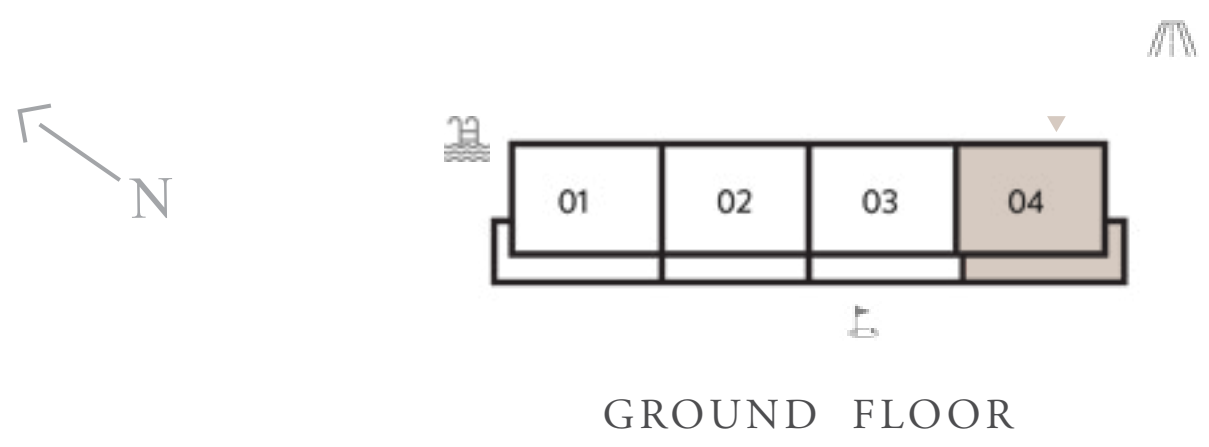
KEY SECTION



KEY LAYOUT



KEY PLANS



FLOOR PLAN 1. All dimensions are in imperial and metric, and measured from finish to finish excluding construction tolerances. 2. All materials, dimensions, and drawings are approximate only. 3. Information is subject to change without notice, at developer’s absolute discretion. 4. Actual area may vary from the stated area. 5. Drawings not to scale. 6. All images used are for illustrative purposes only and do not represent the actual size, features, specifications, fittings, and furnishings. 7. The developer reserves the right to make revisions / alterations, at it’s absolute discretion, without any liability whatsoever.

VISTA RIDGE

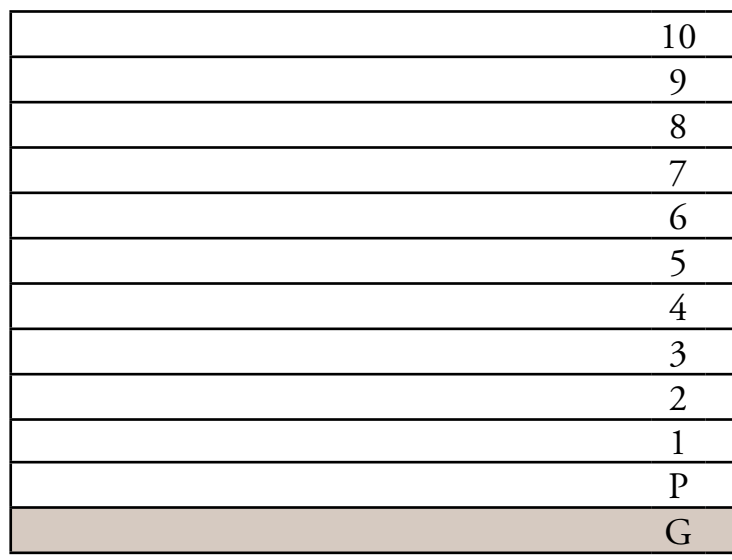
EMAAR SOUTH

TOWER 2 2 BEDROOM TYPE 2

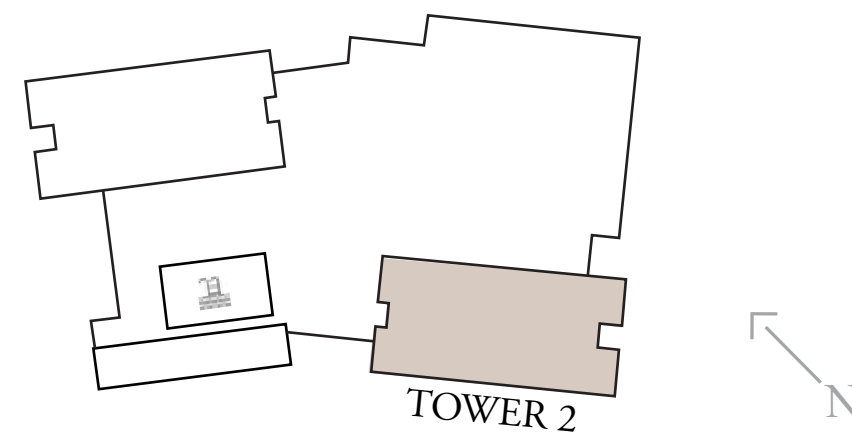
UNITS
G 02

| | | |
|--------------|----------------|--------------|
| SUITE AREA | 1143.56 SQ.FT. | 106.24 SQ.M. |
| BALCONY AREA | 294.72 SQ.FT. | 27.38 SQ.M. |
| TOTAL AREA | 1438.27 SQ.FT. | 133.62 SQ.M. |

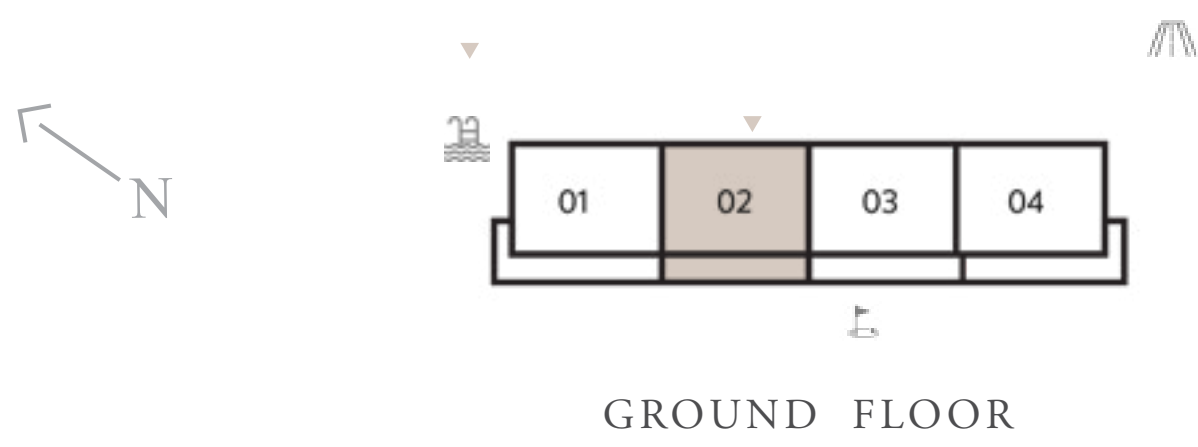
KEY SECTION



KEY LAYOUT



KEY PLANS



FLOOR PLAN 1. All dimensions are in imperial and metric, and measured from finish to finish excluding construction tolerances. 2. All materials, dimensions, and drawings are approximate only. 3. Information is subject to change without notice, at developer's absolute discretion. 4. Actual area may vary from the stated area. 5. Drawings not to scale. 6. All images used are for illustrative purposes only and do not represent the actual size, features, specifications, fittings, and furnishings. 7. The developer reserves the right to make revisions / alterations, at it's absolute discretion, without any liability whatsoever.

VISTA RIDGE

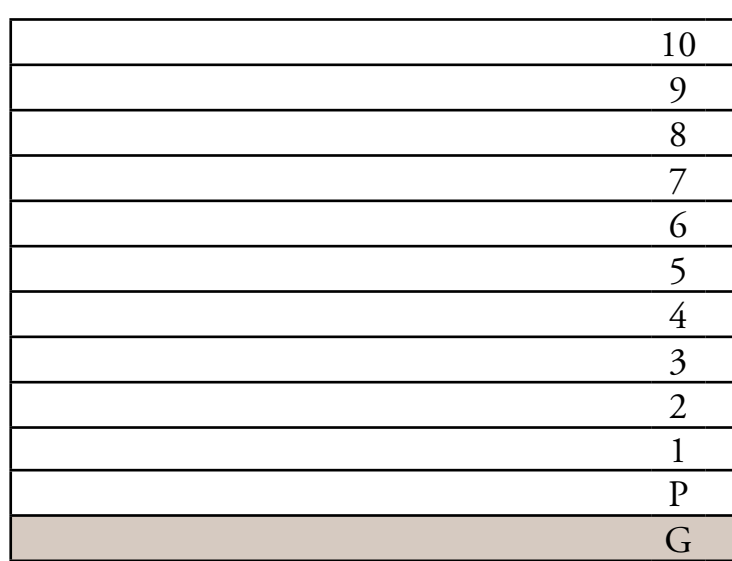
EMAAR SOUTH

TOWER 2 2 BEDROOM TYPE 2A

UNITS
G 03

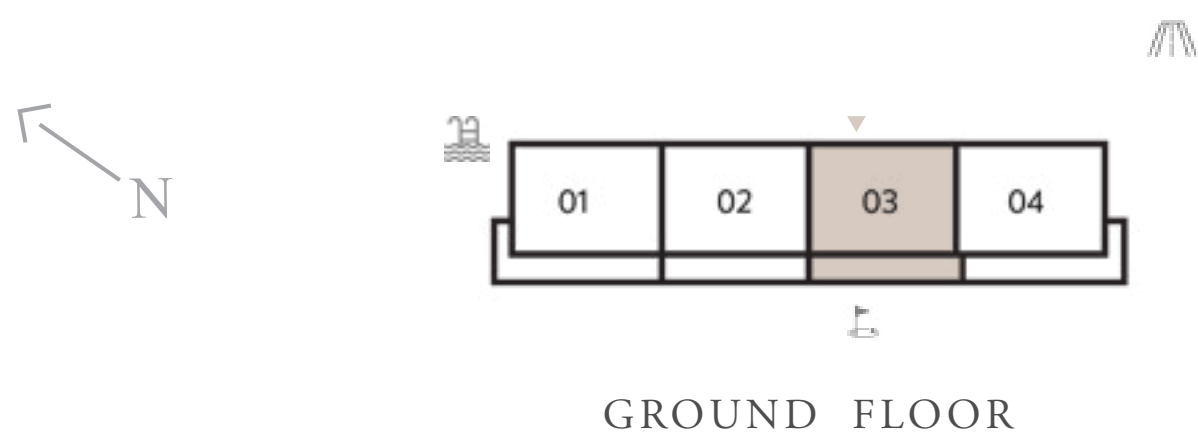
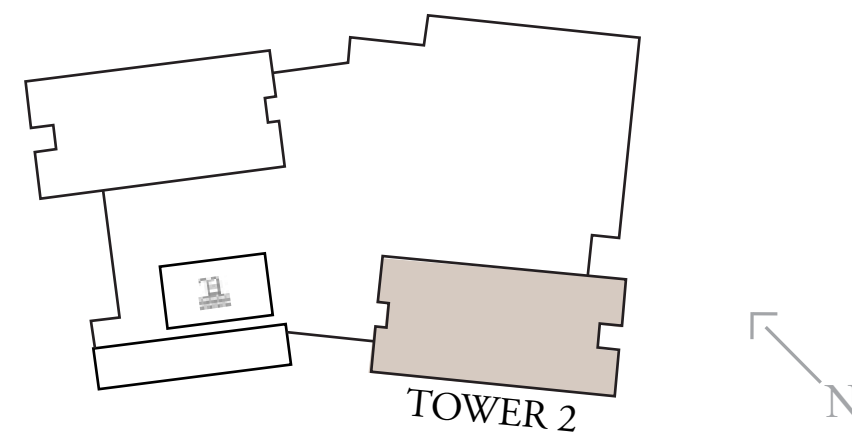
| | | |
|--------------|----------------|--------------|
| SUITE AREA | 1143.34 SQ.FT. | 106.22 SQ.M. |
| BALCONY AREA | 294.93 SQ.FT. | 27.4 SQ.M. |
| TOTAL AREA | 1438.27 SQ.FT. | 133.62 SQ.M. |

KEY SECTION



KEY PLANS

KEY LAYOUT



FLOOR PLAN 1. All dimensions are in imperial and metric, and measured from finish to finish excluding construction tolerances. 2. All materials, dimensions, and drawings are approximate only. 3. Information is subject to change without notice, at developer's absolute discretion. 4. Actual area may vary from the stated area. 5. Drawings not to scale. 6. All images used are for illustrative purposes only and do not represent the actual size, features, specifications, fittings, and furnishings. 7. The developer reserves the right to make revisions / alterations, at it's absolute discretion, without any liability whatsoever.

VISTA RIDGE

EMAAR SOUTH

TOWER 2 2 BEDROOM TYPE 3

UNITS

209, 309, 409, 509, 609, 709

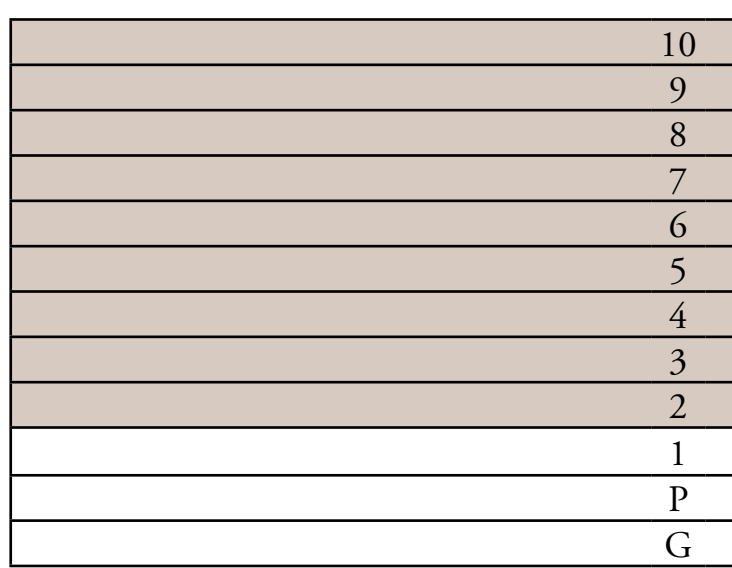
| | | |
|--------------|----------------|--------------|
| SUITE AREA | 1148.62 SQ.FT. | 106.71 SQ.M. |
| BALCONY AREA | 222.81 SQ.FT. | 20.7 SQ.M. |
| TOTAL AREA | 1371.43 SQ.FT. | 127.41 SQ.M. |

UNITS

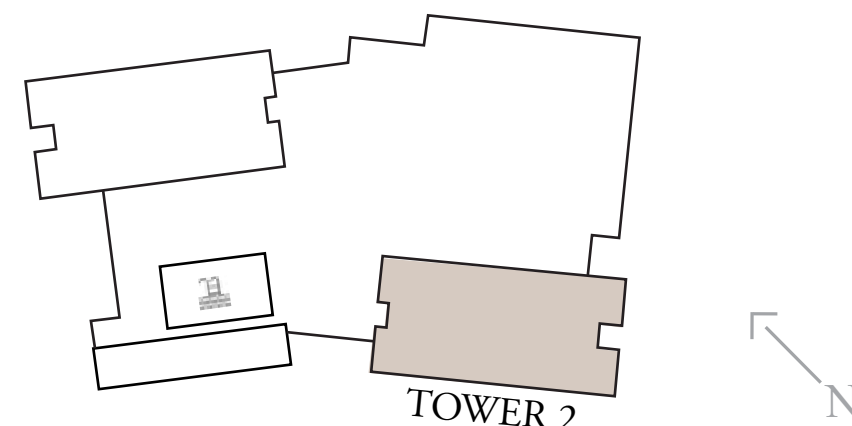
205, 305, 405, 505, 605, 705, 805, 905, 1005

| | | |
|--------------|----------------|--------------|
| SUITE AREA | 1159.92 SQ.FT. | 107.76 SQ.M. |
| BALCONY AREA | 221.84 SQ.FT. | 20.61 SQ.M. |
| TOTAL AREA | 1381.76 SQ.FT. | 128.37 SQ.M. |

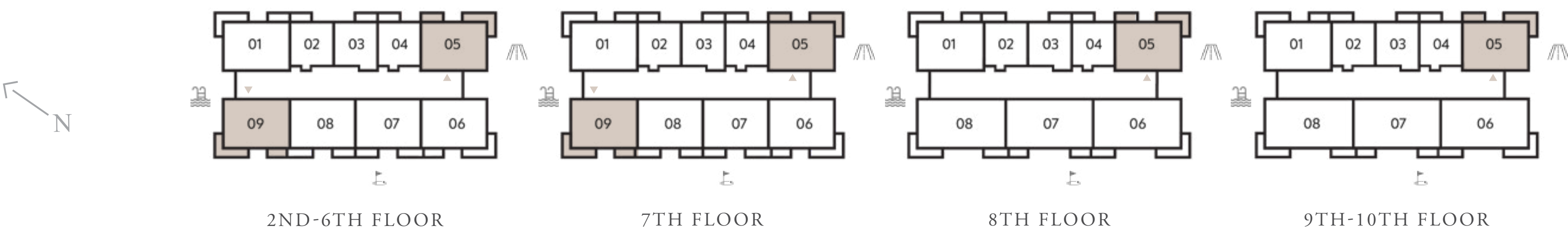
KEY SECTION



KEY LAYOUT



KEY PLANS



FLOOR PLAN 1. All dimensions are in imperial and metric, and measured from finish to finish excluding construction tolerances. 2. All materials, dimensions, and drawings are approximate only. 3. Information is subject to change without notice, at developer's absolute discretion. 4. Actual area may vary from the stated area. 5. Drawings not to scale. 6. All images used are for illustrative purposes only and do not represent the actual size, features, specifications, fittings, and furnishings. 7. The developer reserves the right to make revisions / alterations, at it's absolute discretion, without any liability whatsoever.

VISTA RIDGE

EMAAR SOUTH

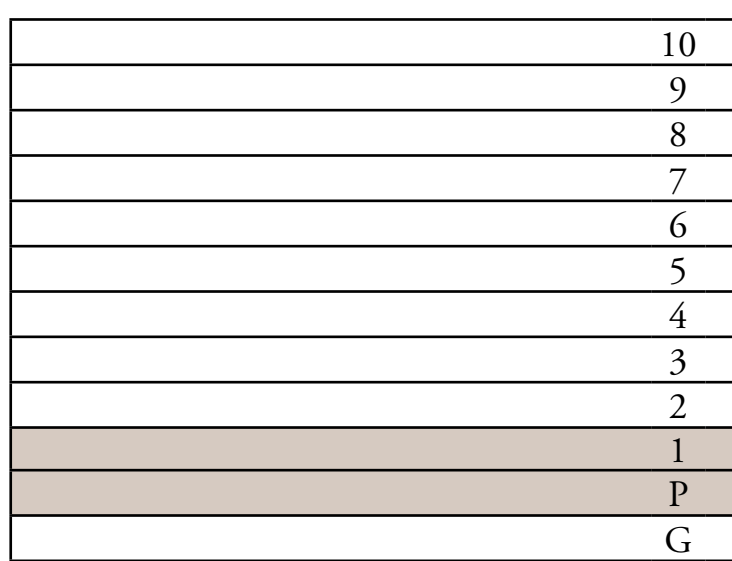
TOWER 2 2 BEDROOM TYPE 3A

UNITS

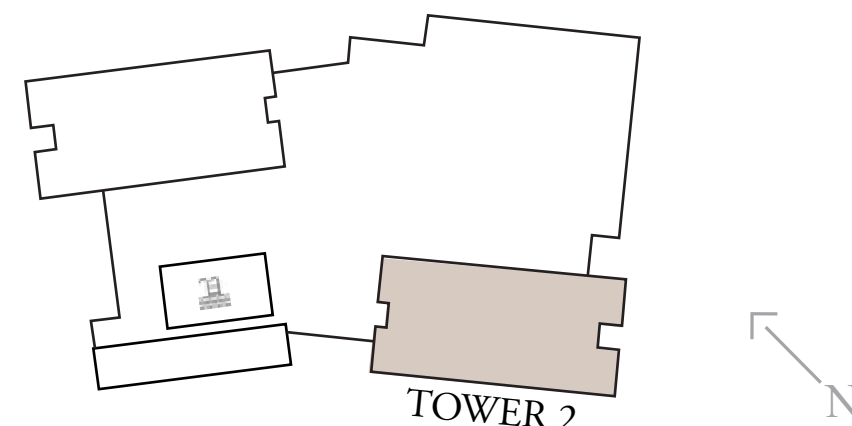
P01, 108

| | | |
|--------------|----------------|--------------|
| SUITE AREA | 1148.83 SQ.FT. | 106.73 SQ.M. |
| BALCONY AREA | 222.81 SQ.FT. | 20.7 SQ.M. |
| TOTAL AREA | 1371.65 SQ.FT. | 127.43 SQ.M. |

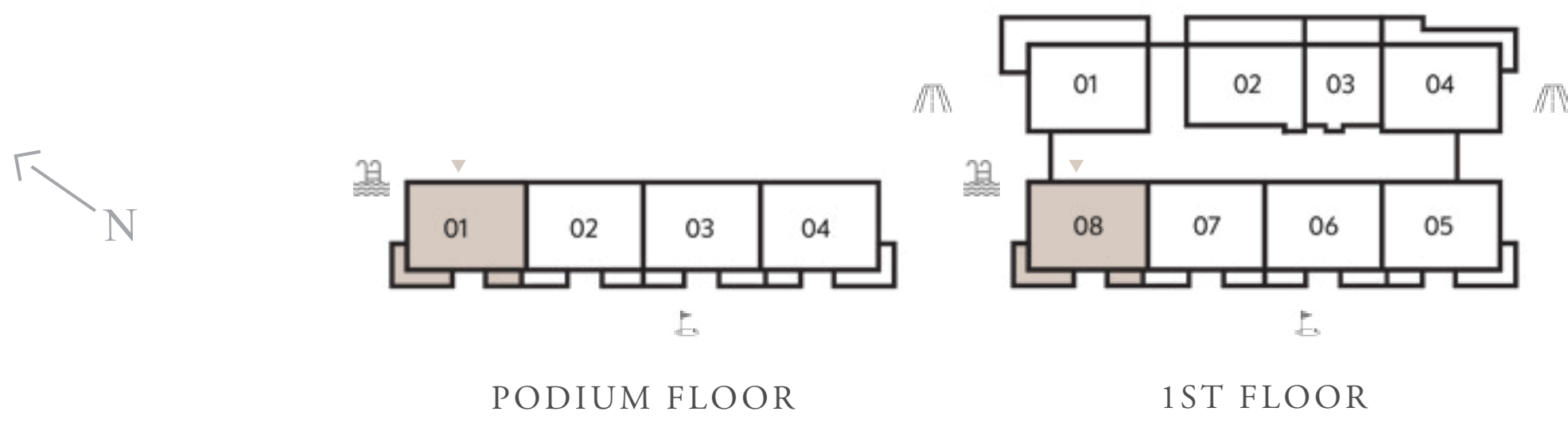
KEY SECTION



KEY LAYOUT



KEY PLANS



FLOOR PLAN 1. All dimensions are in imperial and metric, and measured from finish to finish excluding construction tolerances. 2. All materials, dimensions, and drawings are approximate only. 3. Information is subject to change without notice, at developer's absolute discretion. 4. Actual area may vary from the stated area. 5. Drawings not to scale. 6. All images used are for illustrative purposes only and do not represent the actual size, features, specifications, fittings, and furnishings. 7. The developer reserves the right to make revisions / alterations, at it's absolute discretion, without any liability whatsoever.

VISTA RIDGE

EMAAR SOUTH

TOWER 2 2 BEDROOM TYPE 3A

UNITS

P04, 105, 206, 306, 406, 506, 606, 706

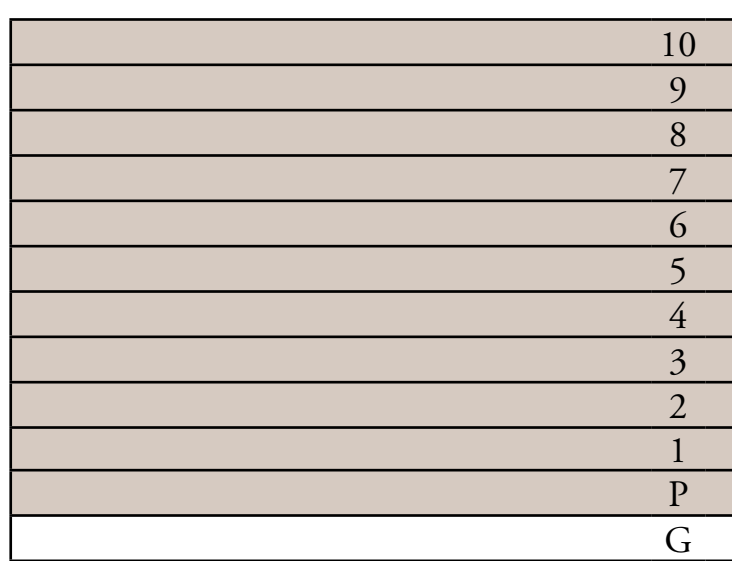
| | | |
|--------------|----------------|--------------|
| SUITE AREA | 1151.74 SQ.FT. | 107 SQ.M. |
| BALCONY AREA | 222.38 SQ.FT. | 20.66 SQ.M. |
| TOTAL AREA | 1374.12 SQ.FT. | 127.66 SQ.M. |

UNITS

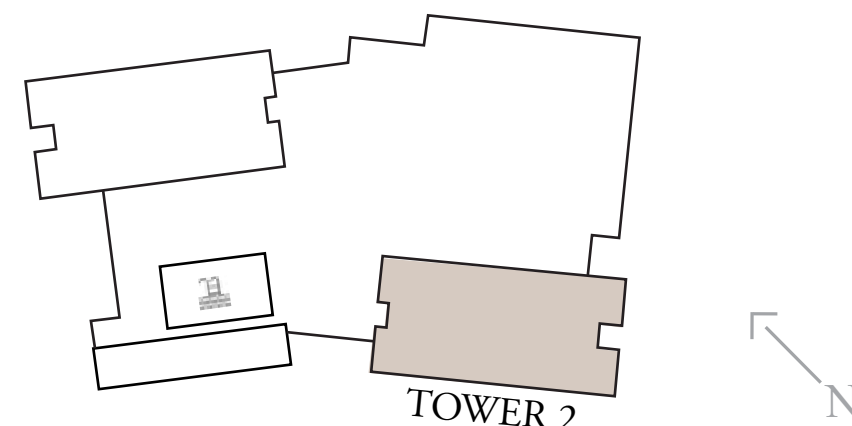
201, 301, 401, 501, 601, 701, 801, 901, 1001

| | | |
|--------------|----------------|--------------|
| SUITE AREA | 1159.38 SQ.FT. | 107.71 SQ.M. |
| BALCONY AREA | 222.81 SQ.FT. | 20.7 SQ.M. |
| TOTAL AREA | 1382.19 SQ.FT. | 128.41 SQ.M. |

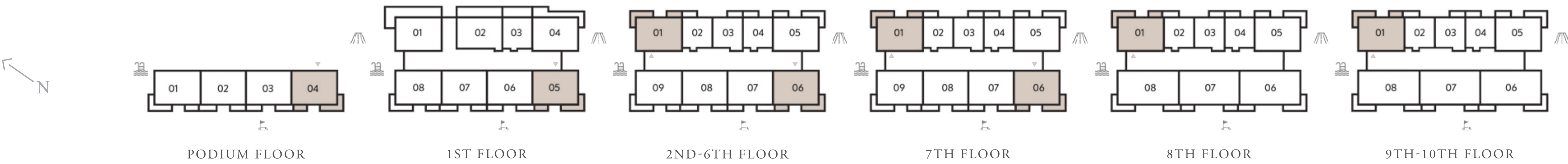
KEY SECTION



KEY LAYOUT



KEY PLANS



FLOOR PLAN 1. All dimensions are in imperial and metric, and measured from finish to finish excluding construction tolerances. 2. All materials, dimensions, and drawings are approximate only. 3. Information is subject to change without notice, at developer's absolute discretion. 4. Actual area may vary from the stated area. 5. Drawings not to scale. 6. All images used are for illustrative purposes only and do not represent the actual size, features, specifications, fittings, and furnishings. 7. The developer reserves the right to make revisions / alterations, at it's absolute discretion, without any liability whatsoever.

VISTA RIDGE

EMAAR SOUTH

TOWER 2 2 BEDROOM TYPE 4

UNITS

P02, 107, 208, 308, 408, 508, 608

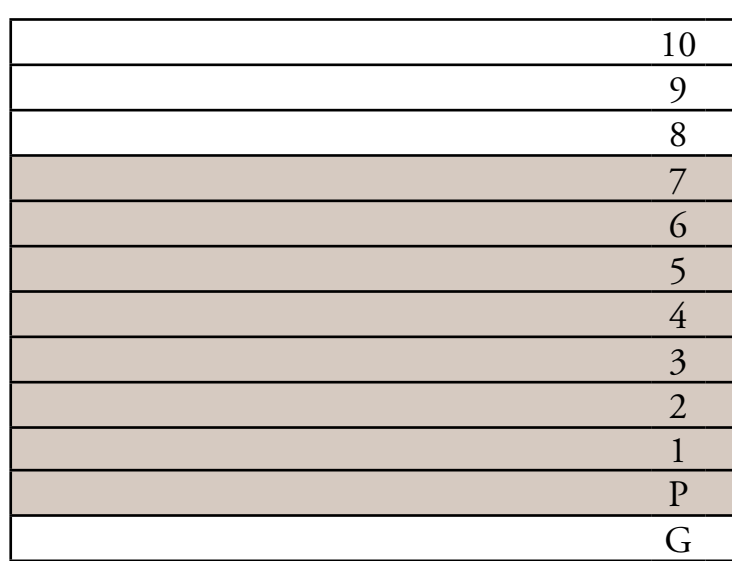
| | | |
|--------------|----------------|--------------|
| SUITE AREA | 1143.34 SQ.FT. | 106.22 SQ.M. |
| BALCONY AREA | 142.19 SQ.FT. | 13.21 SQ.M. |
| TOTAL AREA | 1285.53 SQ.FT. | 119.43 SQ.M. |

UNITS

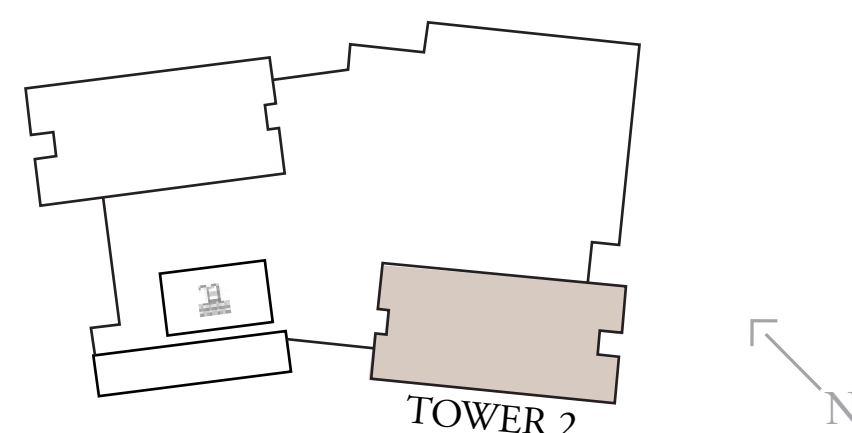
708

| | | |
|--------------|----------------|--------------|
| SUITE AREA | 1133.76 SQ.FT. | 105.33 SQ.M. |
| BALCONY AREA | 142.19 SQ.FT. | 13.21 SQ.M. |
| TOTAL AREA | 1275.95 SQ.FT. | 118.54 SQ.M. |

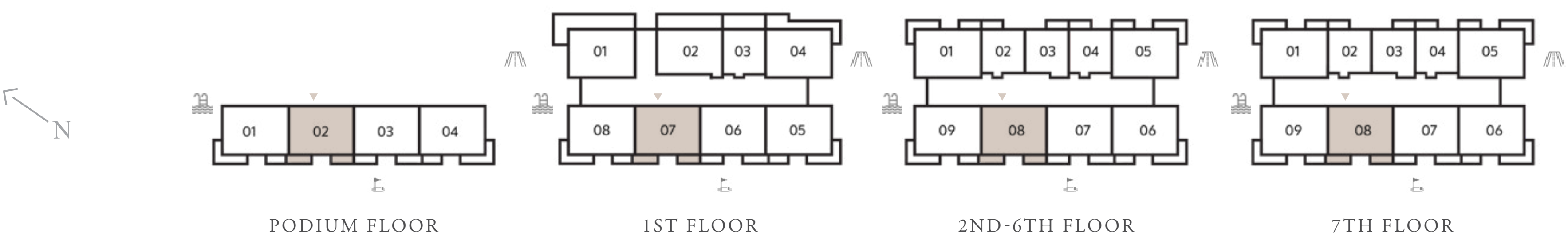
KEY SECTION



KEY LAYOUT



KEY PLANS



FLOOR PLAN 1. All dimensions are in imperial and metric, and measured from finish to finish excluding construction tolerances. 2. All materials, dimensions, and drawings are approximate only. 3. Information is subject to change without notice, at developer's absolute discretion. 4. Actual area may vary from the stated area. 5. Drawings not to scale. 6. All images used are for illustrative purposes only and do not represent the actual size, features, specifications, fittings, and furnishings. 7. The developer reserves the right to make revisions / alterations, at it's absolute discretion, without any liability whatsoever.

VISTA RIDGE

EMAAR SOUTH

TOWER 2 2 BEDROOM TYPE 4A

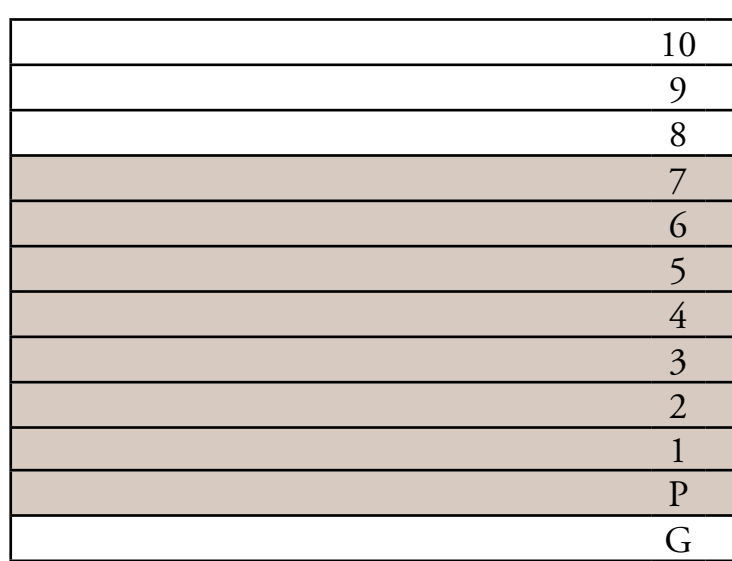
UNITS
P03, 106, 207, 307, 407, 507, 607

| | | |
|--------------|----------------|--------------|
| SUITE AREA | 1143.34 SQ.FT. | 106.22 SQ.M. |
| BALCONY AREA | 142.51 SQ.FT. | 13.24 SQ.M. |
| TOTAL AREA | 1285.86 SQ.FT. | 119.46 SQ.M. |

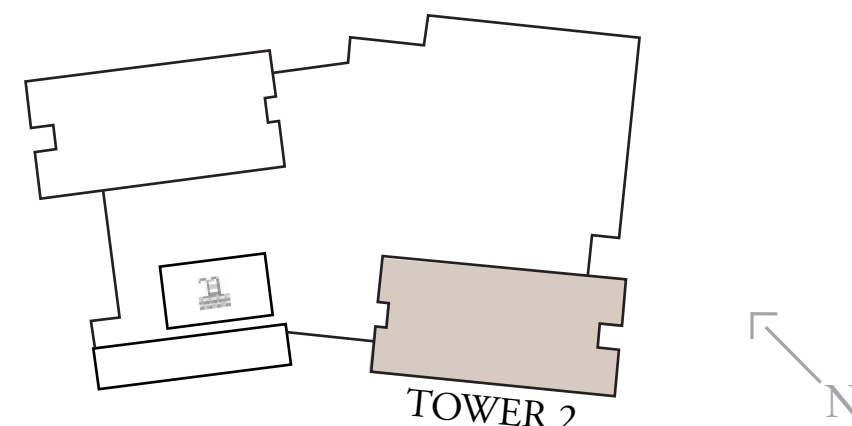
UNITS
707

| | | |
|--------------|----------------|--------------|
| SUITE AREA | 1133.76 SQ.FT. | 105.33 SQ.M. |
| BALCONY AREA | 142.51 SQ.FT. | 13.24 SQ.M. |
| TOTAL AREA | 1276.28 SQ.FT. | 118.57 SQ.M. |

KEY SECTION



KEY LAYOUT



KEY PLANS



FLOOR PLAN 1. All dimensions are in imperial and metric, and measured from finish to finish excluding construction tolerances. 2. All materials, dimensions, and drawings are approximate only. 3. Information is subject to change without notice, at developer's absolute discretion. 4. Actual area may vary from the stated area. 5. Drawings not to scale. 6. All images used are for illustrative purposes only and do not represent the actual size, features, specifications, fittings, and furnishings. 7. The developer reserves the right to make revisions / alterations, at it's absolute discretion, without any liability whatsoever.

VISTA RIDGE

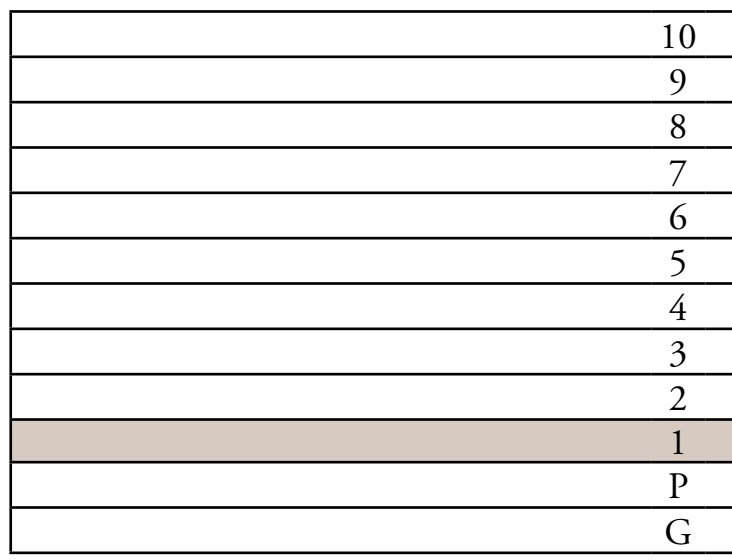
EMAAR SOUTH

TOWER 2 2 BEDROOM TYPE 6A

UNITS
101

| | | |
|--------------|----------------|--------------|
| SUITE AREA | 1159.49 SQ.FT. | 107.72 SQ.M. |
| BALCONY AREA | 529.37 SQ.FT. | 49.18 SQ.M. |
| TOTAL AREA | 1688.86 SQ.FT. | 156.9 SQ.M. |

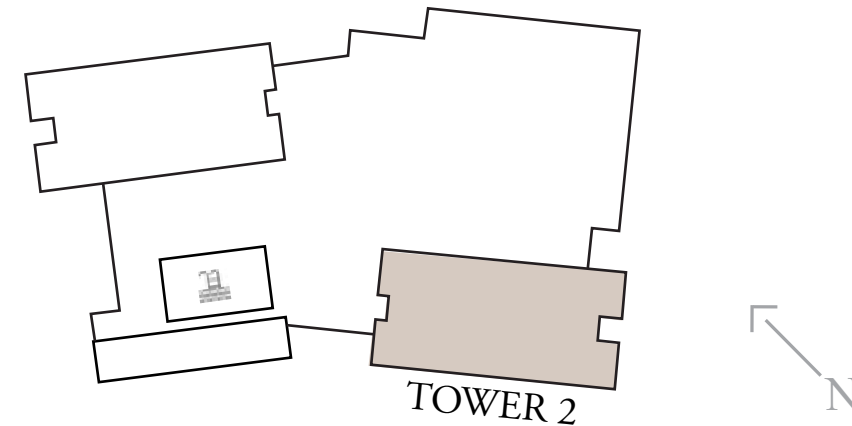
KEY SECTION



KEY PLANS



KEY LAYOUT



FLOOR PLAN 1. All dimensions are in imperial and metric, and measured from finish to finish excluding construction tolerances. 2. All materials, dimensions, and drawings are approximate only. 3. Information is subject to change without notice, at developer's absolute discretion. 4. Actual area may vary from the stated area. 5. Drawings not to scale. 6. All images used are for illustrative purposes only and do not represent the actual size, features, specifications, fittings, and furnishings. 7. The developer reserves the right to make revisions / alterations, at it's absolute discretion, without any liability whatsoever.

VISTA RIDGE

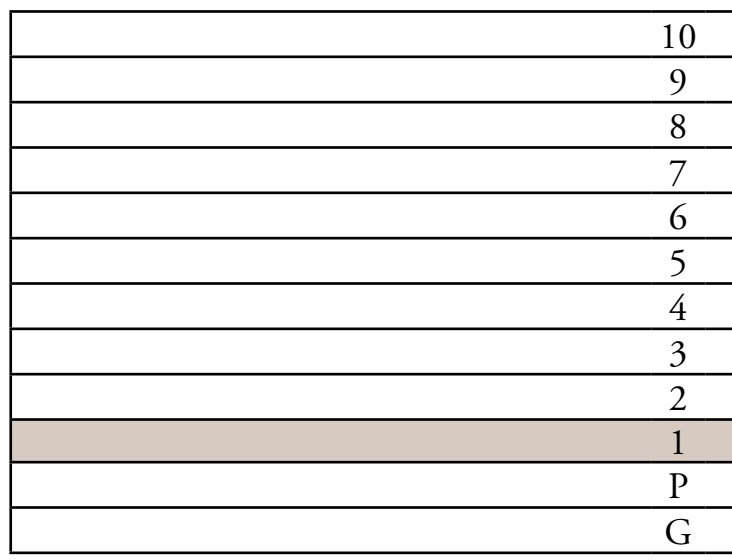
EMAAR SOUTH

TOWER 2 2 BEDROOM TYPE 7

UNITS
102

| | | |
|--------------|----------------|--------------|
| SUITE AREA | 1077.36 SQ.FT. | 100.09 SQ.M. |
| BALCONY AREA | 369.85 SQ.FT. | 34.36 SQ.M. |
| TOTAL AREA | 1447.21 SQ.FT. | 134.45 SQ.M. |

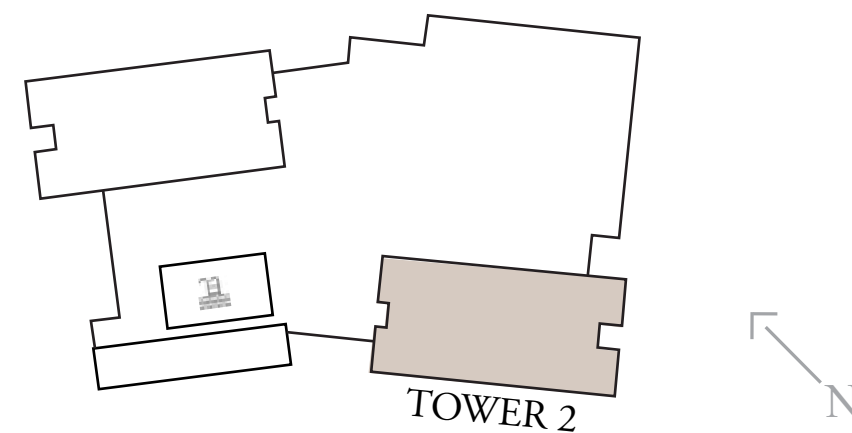
KEY SECTION



KEY PLANS



KEY LAYOUT



FLOOR PLAN 1. All dimensions are in imperial and metric, and measured from finish to finish excluding construction tolerances. 2. All materials, dimensions, and drawings are approximate only. 3. Information is subject to change without notice, at developer's absolute discretion. 4. Actual area may vary from the stated area. 5. Drawings not to scale. 6. All images used are for illustrative purposes only and do not represent the actual size, features, specifications, fittings, and furnishings. 7. The developer reserves the right to make revisions / alterations, at it's absolute discretion, without any liability whatsoever.

VISTA RIDGE

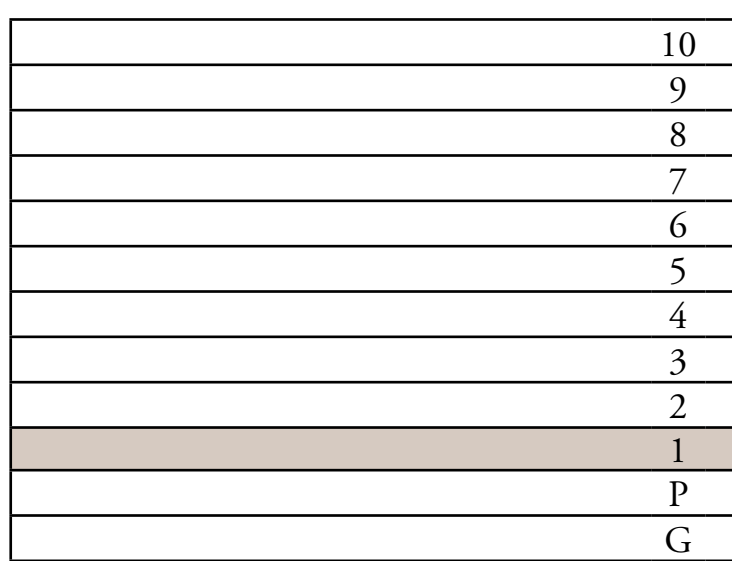
EMAAR SOUTH

TOWER 2 2 BEDROOM TYPE 8

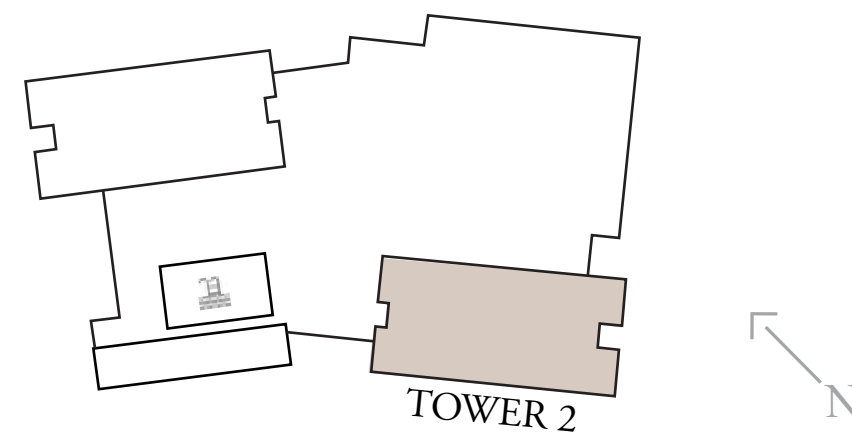
UNITS
104

| | | |
|--------------|----------------|--------------|
| SUITE AREA | 1161.1 SQ.FT. | 107.87 SQ.M. |
| BALCONY AREA | 340.79 SQ.FT. | 31.66 SQ.M. |
| TOTAL AREA | 1501.89 SQ.FT. | 139.53 SQ.M. |

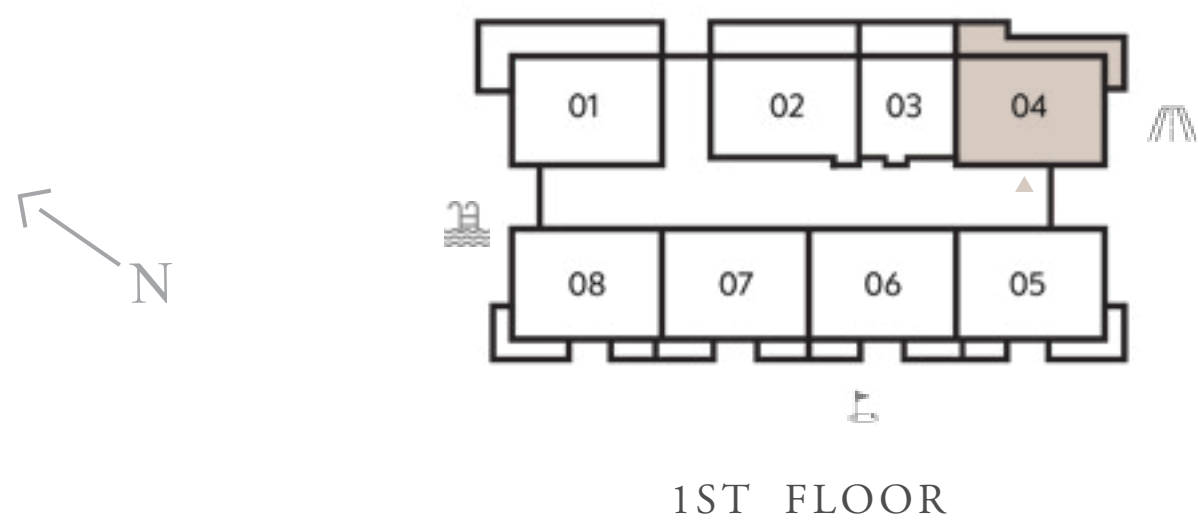
KEY SECTION



KEY LAYOUT



KEY PLANS



FLOOR PLAN 1. All dimensions are in imperial and metric, and measured from finish to finish excluding construction tolerances. 2. All materials, dimensions, and drawings are approximate only. 3. Information is subject to change without notice, at developer's absolute discretion. 4. Actual area may vary from the stated area. 5. Drawings not to scale. 6. All images used are for illustrative purposes only and do not represent the actual size, features, specifications, fittings, and furnishings. 7. The developer reserves the right to make revisions / alterations, at it's absolute discretion, without any liability whatsoever.

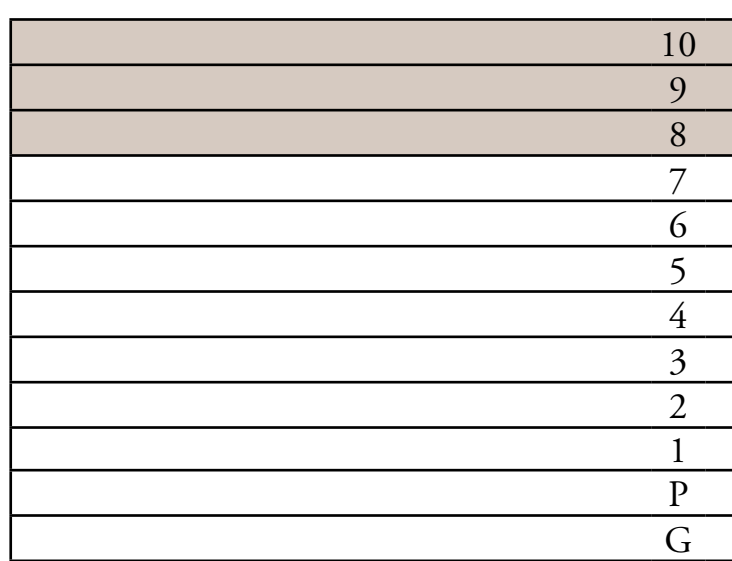
VISTA RIDGE

EMAAR SOUTH

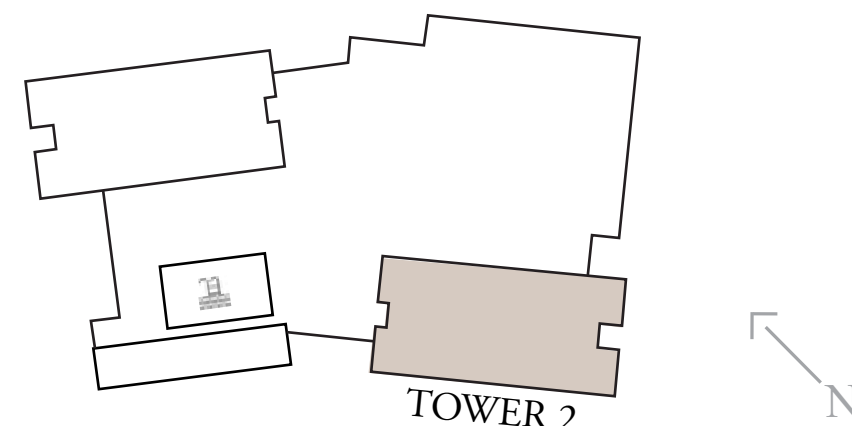
TOWER 2 3 BEDROOM TYPE 1

| UNITS | | |
|--------------|----------------|--------------|
| 808, 908 | | |
| SUITE AREA | 1520.83 SQ.FT. | 141.29 SQ.M. |
| BALCONY AREA | 224.32 SQ.FT. | 20.84 SQ.M. |
| TOTAL AREA | 1745.15 SQ.FT. | 162.13 SQ.M. |
| UNITS | | |
| 1008 | | |
| SUITE AREA | 1521.59 SQ.FT. | 141.36 SQ.M. |
| BALCONY AREA | 230.35 SQ.FT. | 21.4 SQ.M. |
| TOTAL AREA | 1751.93 SQ.FT. | 162.76 SQ.M. |

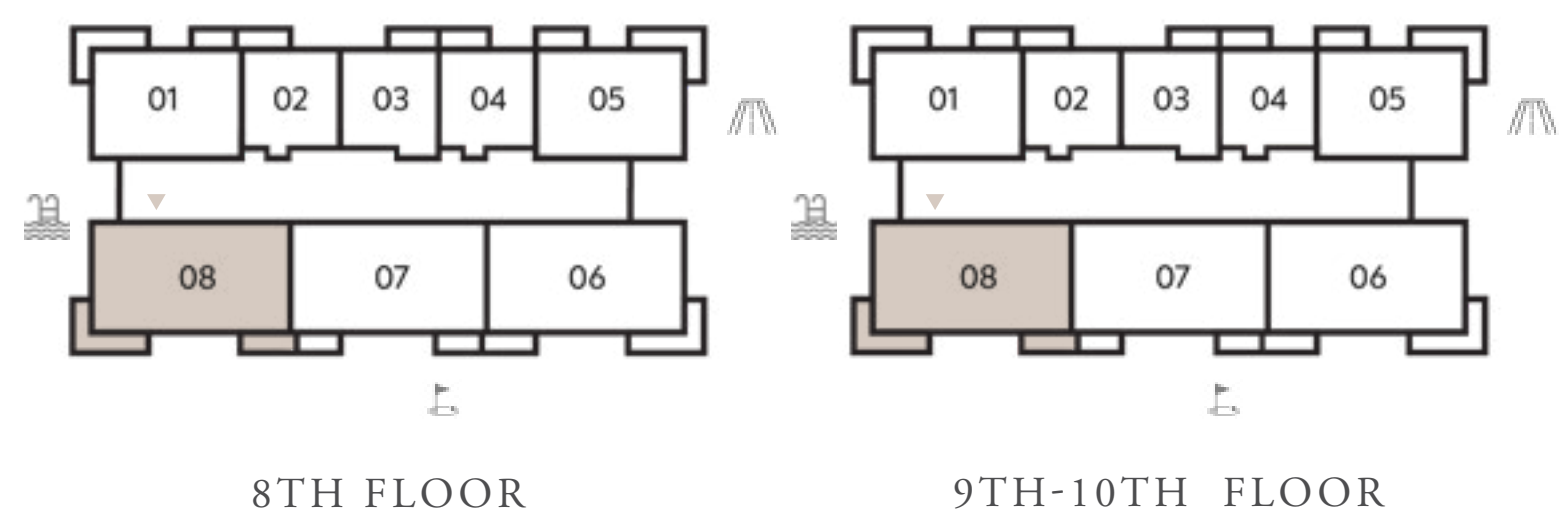
KEY SECTION



KEY LAYOUT



KEY PLANS



FLOOR PLAN 1. All dimensions are in imperial and metric, and measured from finish to finish excluding construction tolerances. 2. All materials, dimensions, and drawings are approximate only. 3. Information is subject to change without notice, at developer's absolute discretion. 4. Actual area may vary from the stated area. 5. Drawings not to scale. 6. All images used are for illustrative purposes only and do not represent the actual size, features, specifications, fittings, and furnishings. 7. The developer reserves the right to make revisions / alterations, at it's absolute discretion, without any liability whatsoever.

VISTA RIDGE

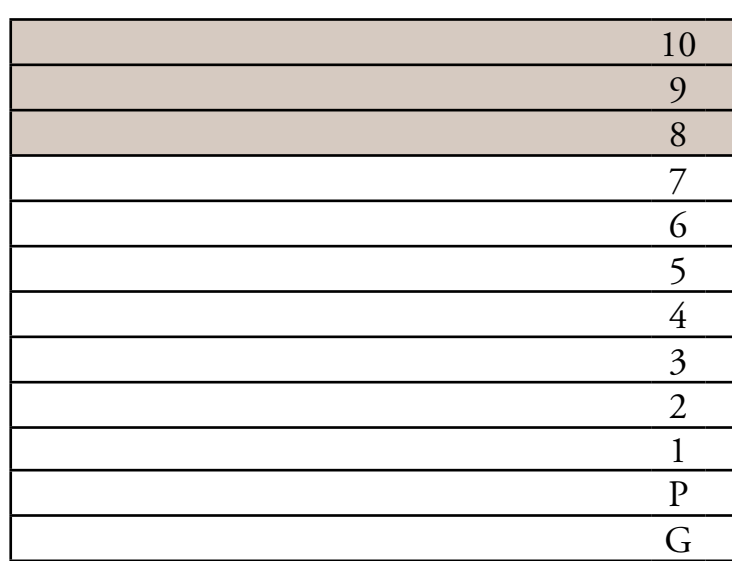
EMAAR SOUTH

TOWER 2 3 BEDROOM TYPE 1A

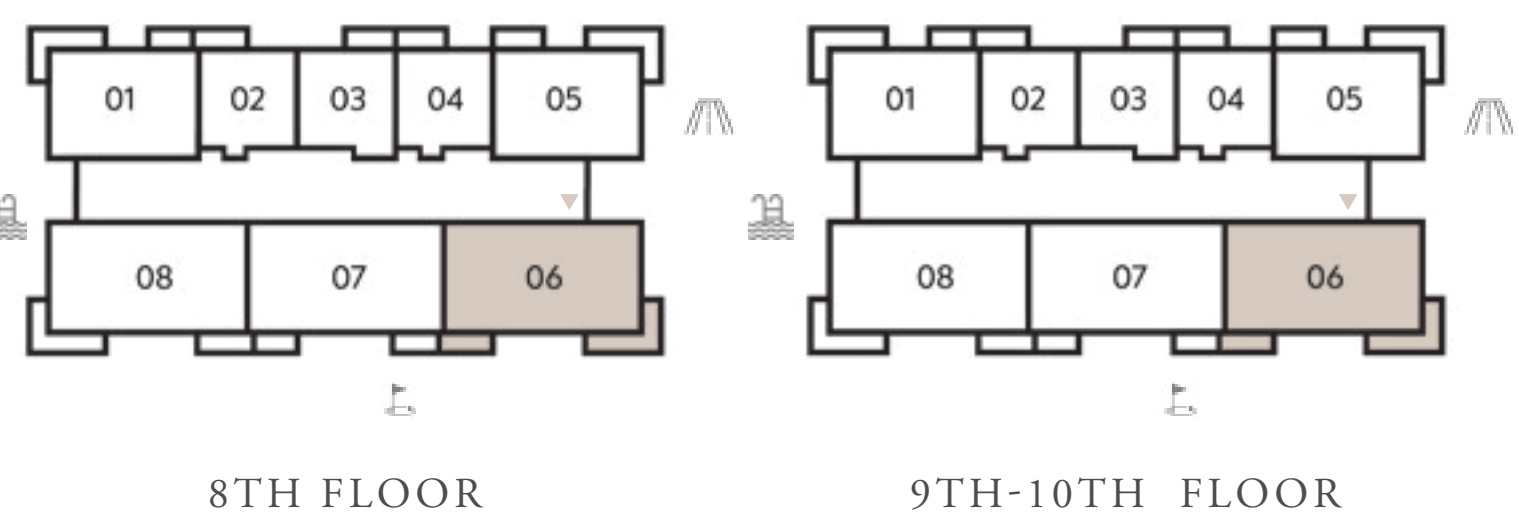
UNITS
806, 906, 1006

| | | |
|--------------|----------------|--------------|
| SUITE AREA | 1523.95 SQ.FT. | 141.58 SQ.M. |
| BALCONY AREA | 224.54 SQ.FT. | 20.86 SQ.M. |
| TOTAL AREA | 1748.49 SQ.FT. | 162.44 SQ.M. |

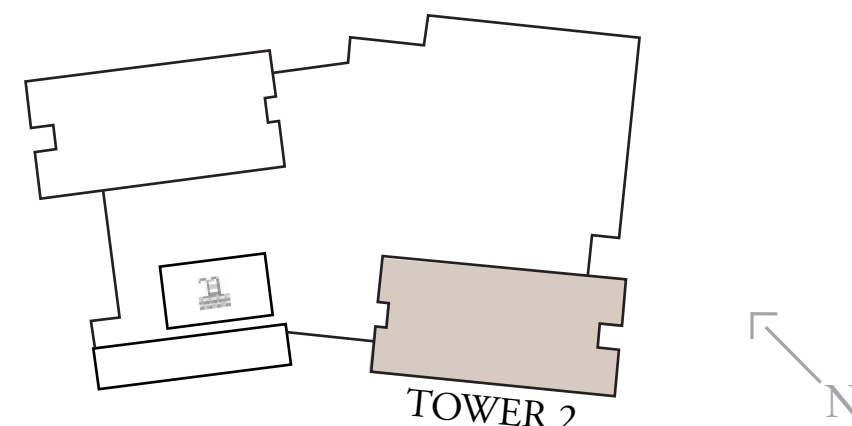
KEY SECTION



KEY PLANS



KEY LAYOUT



FLOOR PLAN 1. All dimensions are in imperial and metric, and measured from finish to finish excluding construction tolerances. 2. All materials, dimensions, and drawings are approximate only. 3. Information is subject to change without notice, at developer's absolute discretion. 4. Actual area may vary from the stated area. 5. Drawings not to scale. 6. All images used are for illustrative purposes only and do not represent the actual size, features, specifications, fittings, and furnishings. 7. The developer reserves the right to make revisions / alterations, at it's absolute discretion, without any liability whatsoever.

VISTA RIDGE

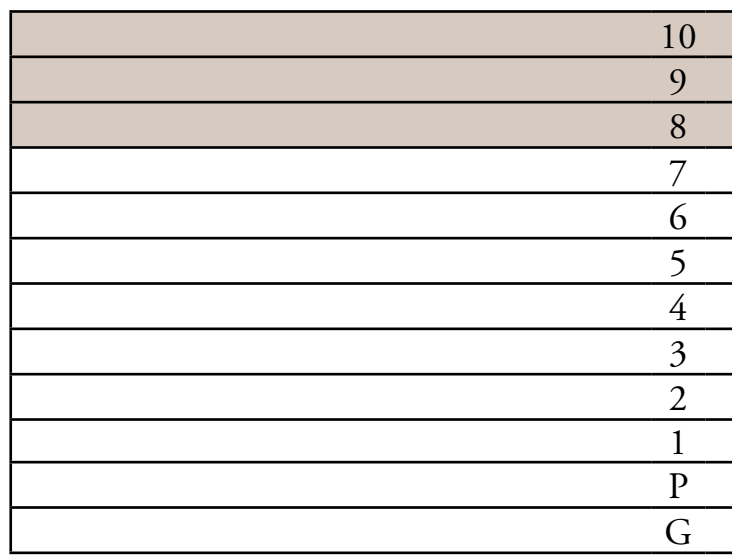
EMAAR SOUTH

TOWER 2 3 BEDROOM TYPE 2

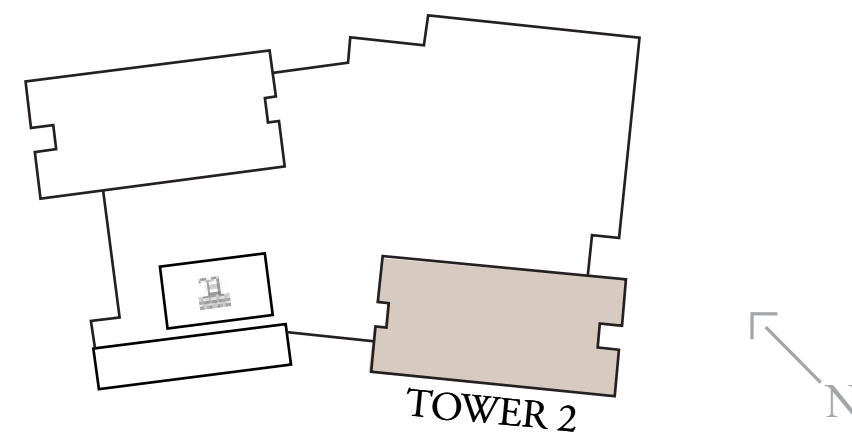
| UNITS | | |
|--------------|----------------|--------------|
| 807, 907 | | |
| SUITE AREA | 1520.83 SQ.FT. | 141.29 SQ.M. |
| BALCONY AREA | 140.68 SQ.FT. | 13.07 SQ.M. |
| TOTAL AREA | 1661.52 SQ.FT. | 154.36 SQ.M. |

| UNITS | | |
|--------------|----------------|--------------|
| 1007 | | |
| SUITE AREA | 1520.83 SQ.FT. | 141.29 SQ.M. |
| BALCONY AREA | 134.55 SQ.FT. | 12.5 SQ.M. |
| TOTAL AREA | 1655.38 SQ.FT. | 153.79 SQ.M. |

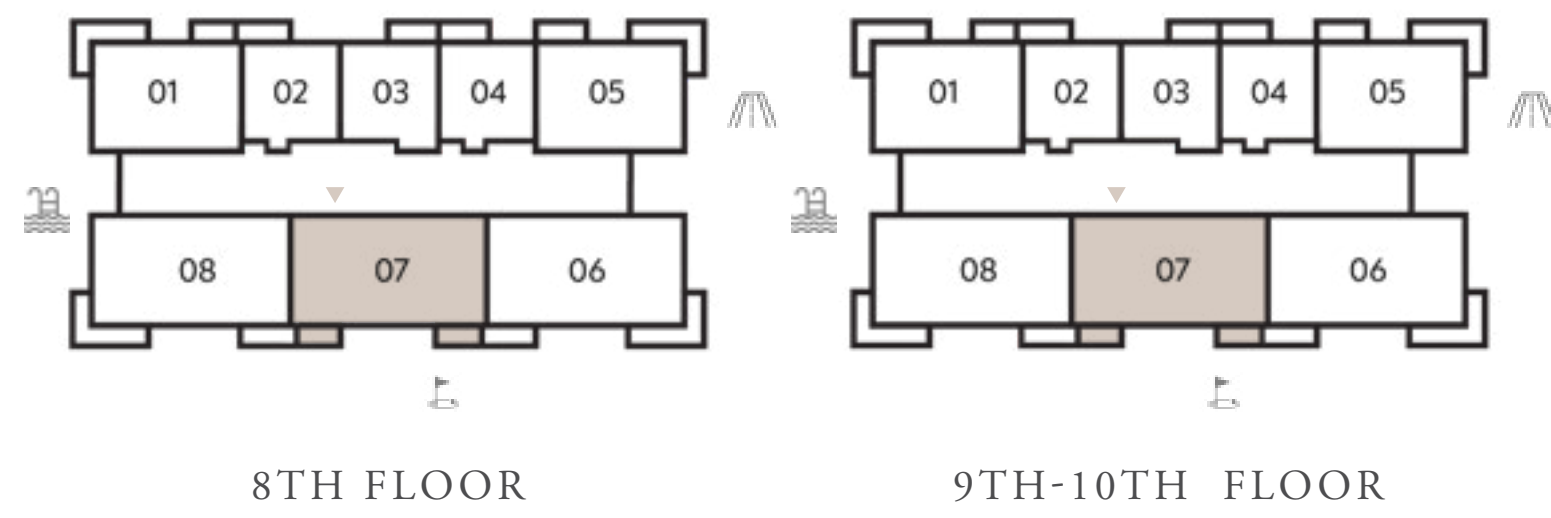
KEY SECTION



KEY LAYOUT



KEY PLANS



FLOOR PLAN 1. All dimensions are in imperial and metric, and measured from finish to finish excluding construction tolerances. 2. All materials, dimensions, and drawings are approximate only. 3. Information is subject to change without notice, at developer's absolute discretion. 4. Actual area may vary from the stated area. 5. Drawings not to scale. 6. All images used are for illustrative purposes only and do not represent the actual size, features, specifications, fittings, and furnishings. 7. The developer reserves the right to make revisions / alterations, at it's absolute discretion, without any liability whatsoever.

TOWNHOUSES

FLOOR PLANS

VISTA RIDGE

EMAAR SOUTH

TOWNHOUSE TYPE 1

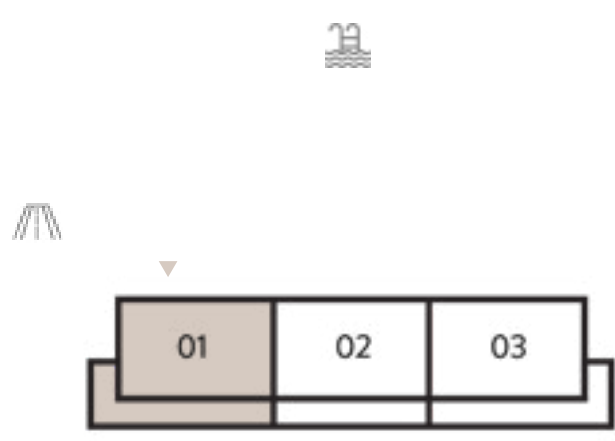
UNITS
G 01

| | | |
|--------------|----------------|--------------|
| SUITE AREA | 2201.22 SQ.FT. | 204.5 SQ.M. |
| BALCONY AREA | 562.09 SQ.FT. | 52.22 SQ.M. |
| TOTAL AREA | 2763.31 SQ.FT. | 256.72 SQ.M. |

KEY SECTION

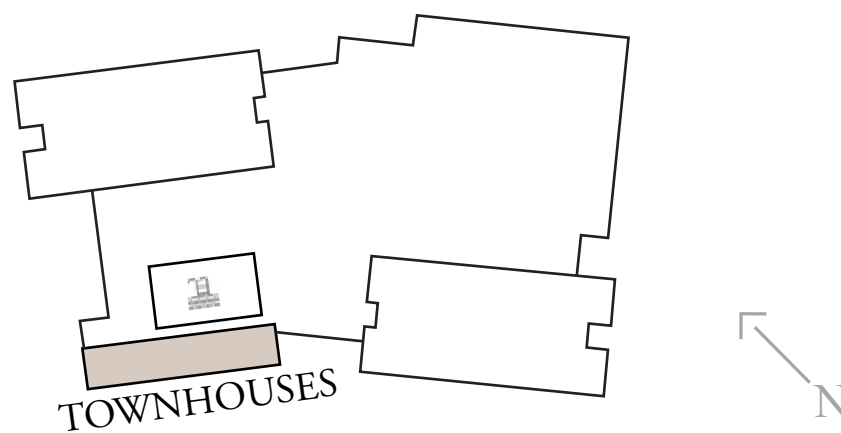


KEY PLANS



GROUND FLOOR

KEY LAYOUT



UPPER LEVEL



LOWER LEVEL

FLOOR PLAN 1. All dimensions are in imperial and metric, and measured from finish to finish excluding construction tolerances. 2. All materials, dimensions, and drawings are approximate only. 3. Information is subject to change without notice, at developer's absolute discretion. 4. Actual area may vary from the stated area. 5. Drawings not to scale. 6. All images used are for illustrative purposes only and do not represent the actual size, features, specifications, fittings, and furnishings. 7. The developer reserves the right to make revisions / alterations, at it's absolute discretion, without any liability whatsoever.

VISTA RIDGE

EMAAR SOUTH

TOWNHOUSE TYPE 1A

UNITS
G 03

| | | |
|--------------|----------------|--------------|
| SUITE AREA | 2202.08 SQ.FT. | 204.58 SQ.M. |
| BALCONY AREA | 559.51 SQ.FT. | 51.98 SQ.M. |
| TOTAL AREA | 2761.59 SQ.FT. | 256.56 SQ.M. |

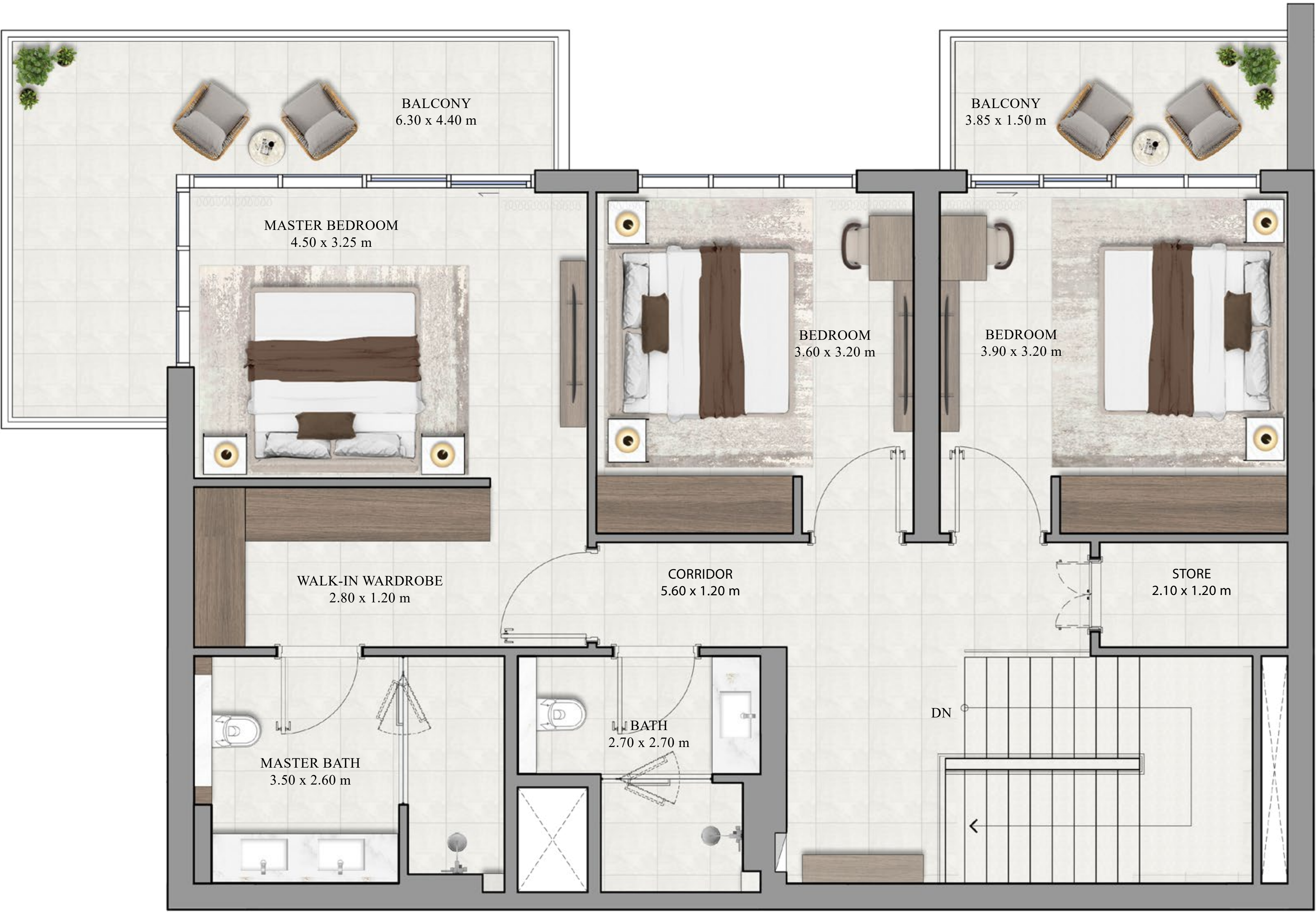
KEY SECTION

KEY LAYOUT

KEY PLANS



GROUND FLOOR



UPPER LEVEL



LOWER LEVEL

FLOOR PLAN 1. All dimensions are in imperial and metric, and measured from finish to finish excluding construction tolerances. 2. All materials, dimensions, and drawings are approximate only. 3. Information is subject to change without notice, at developer's absolute discretion. 4. Actual area may vary from the stated area. 5. Drawings not to scale. 6. All images used are for illustrative purposes only and do not represent the actual size, features, specifications, fittings, and furnishings. 7. The developer reserves the right to make revisions / alterations, at it's absolute discretion, without any liability whatsoever.

VISTA RIDGE

EMAAR SOUTH

TOWNHOUSE TYPE 2

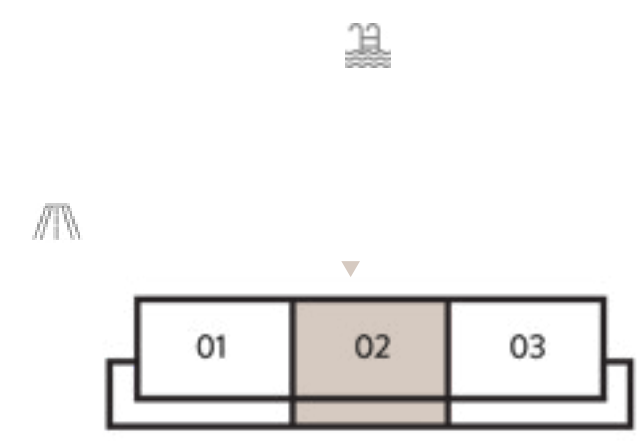
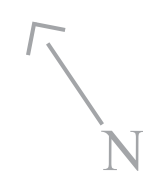
UNITS
G 02

| | | |
|--------------|----------------|--------------|
| SUITE AREA | 2201.97 SQ.FT. | 204.57 SQ.M. |
| BALCONY AREA | 525.6 SQ.FT. | 48.83 SQ.M. |
| TOTAL AREA | 2727.57 SQ.FT. | 253.4 SQ.M. |

KEY SECTION

KEY LAYOUT

KEY PLANS



GROUND FLOOR



UPPER LEVEL



LOWER LEVEL

FLOOR PLAN 1. All dimensions are in imperial and metric, and measured from finish to finish excluding construction tolerances. 2. All materials, dimensions, and drawings are approximate only. 3. Information is subject to change without notice, at developer's absolute discretion. 4. Actual area may vary from the stated area. 5. Drawings not to scale. 6. All images used are for illustrative purposes only and do not represent the actual size, features, specifications, fittings, and furnishings. 7. The developer reserves the right to make revisions / alterations, at it's absolute discretion, without any liability whatsoever.